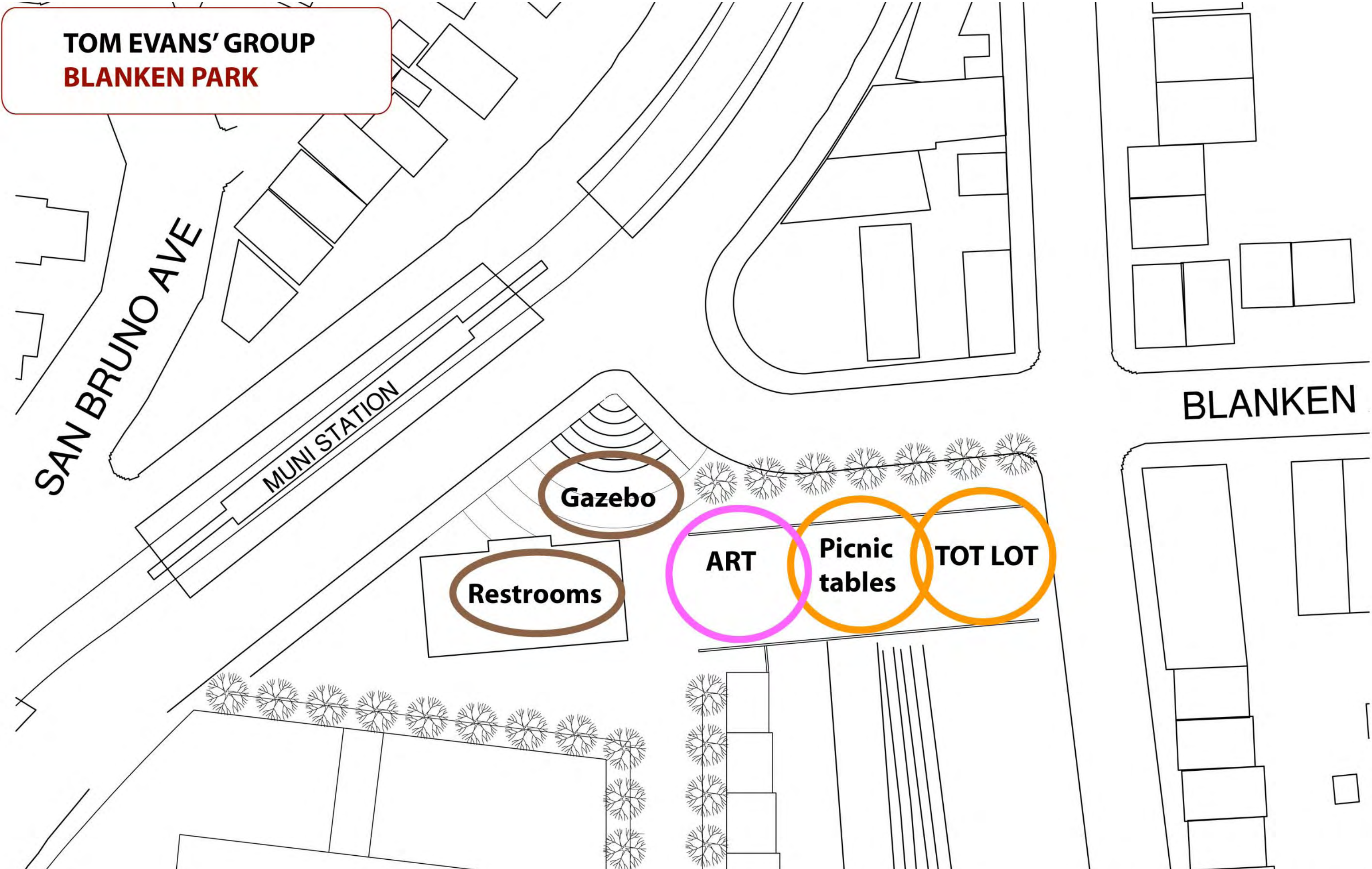
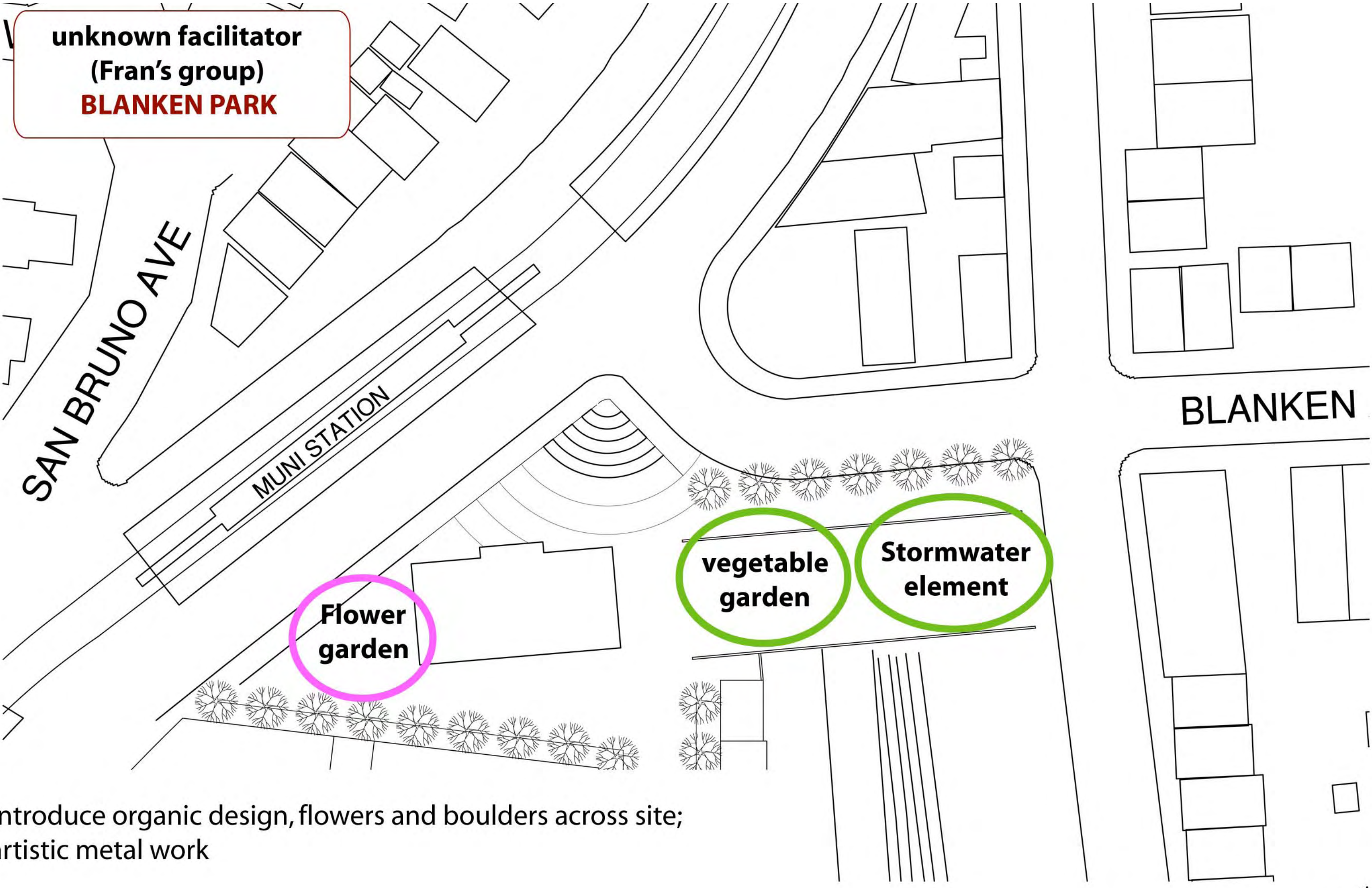


TOM EVANS' GROUP
BLANKEN PARK





**unknown facilitator
(Fran's group)
BLANKEN PARK**

**Flower
garden**

**vegetable
garden**

**Stormwater
element**

Introduce organic design, flowers and boulders across site;
artistic metal work

**unknown facilitator
(Christine's group)
BLANKEN PARK**

SAN BRUNO AVE

MUNI STATION

QUIET
SPACE

BLANKEN

ART

benches

flower
garden

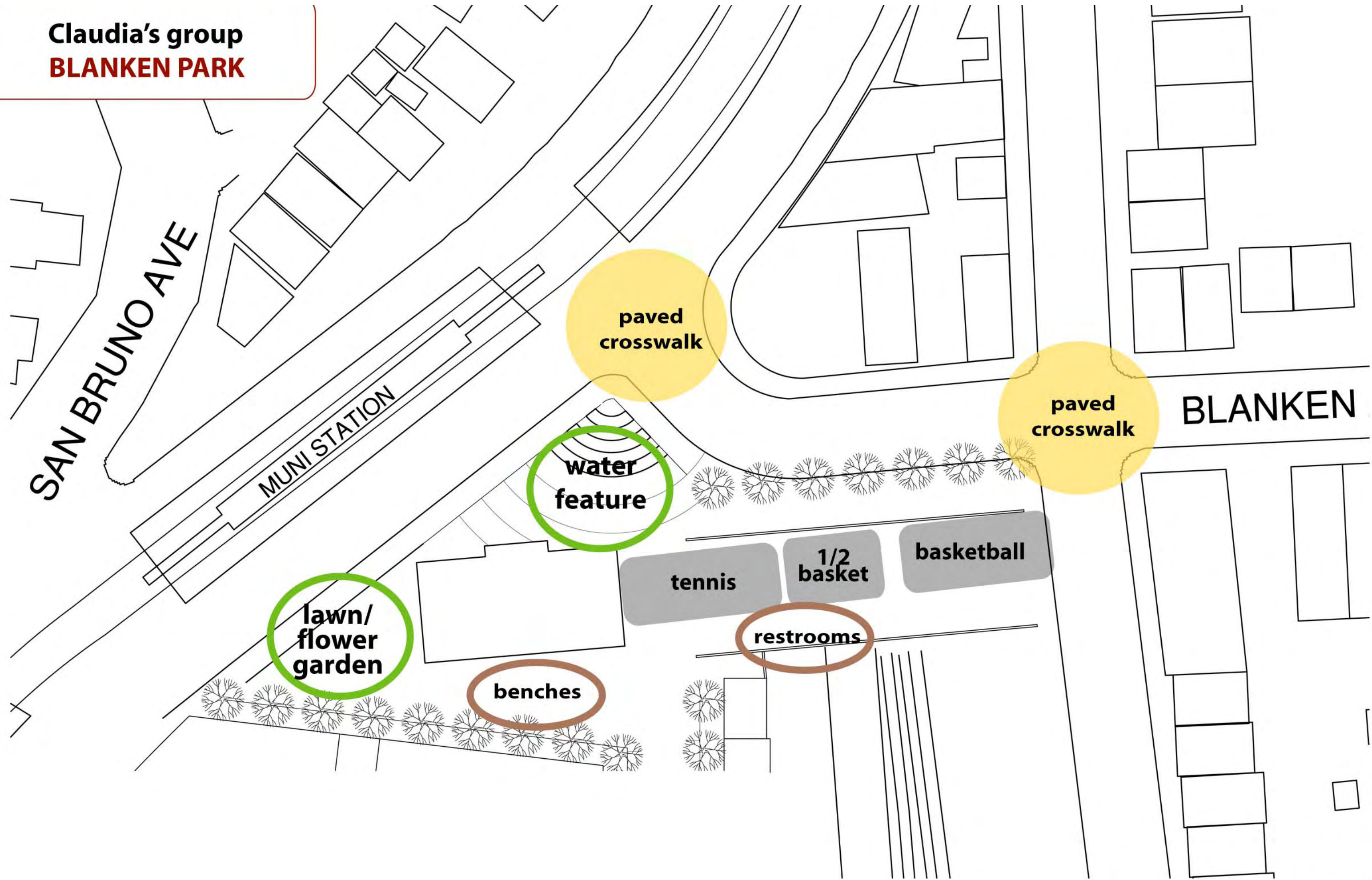
paved
area

restrooms

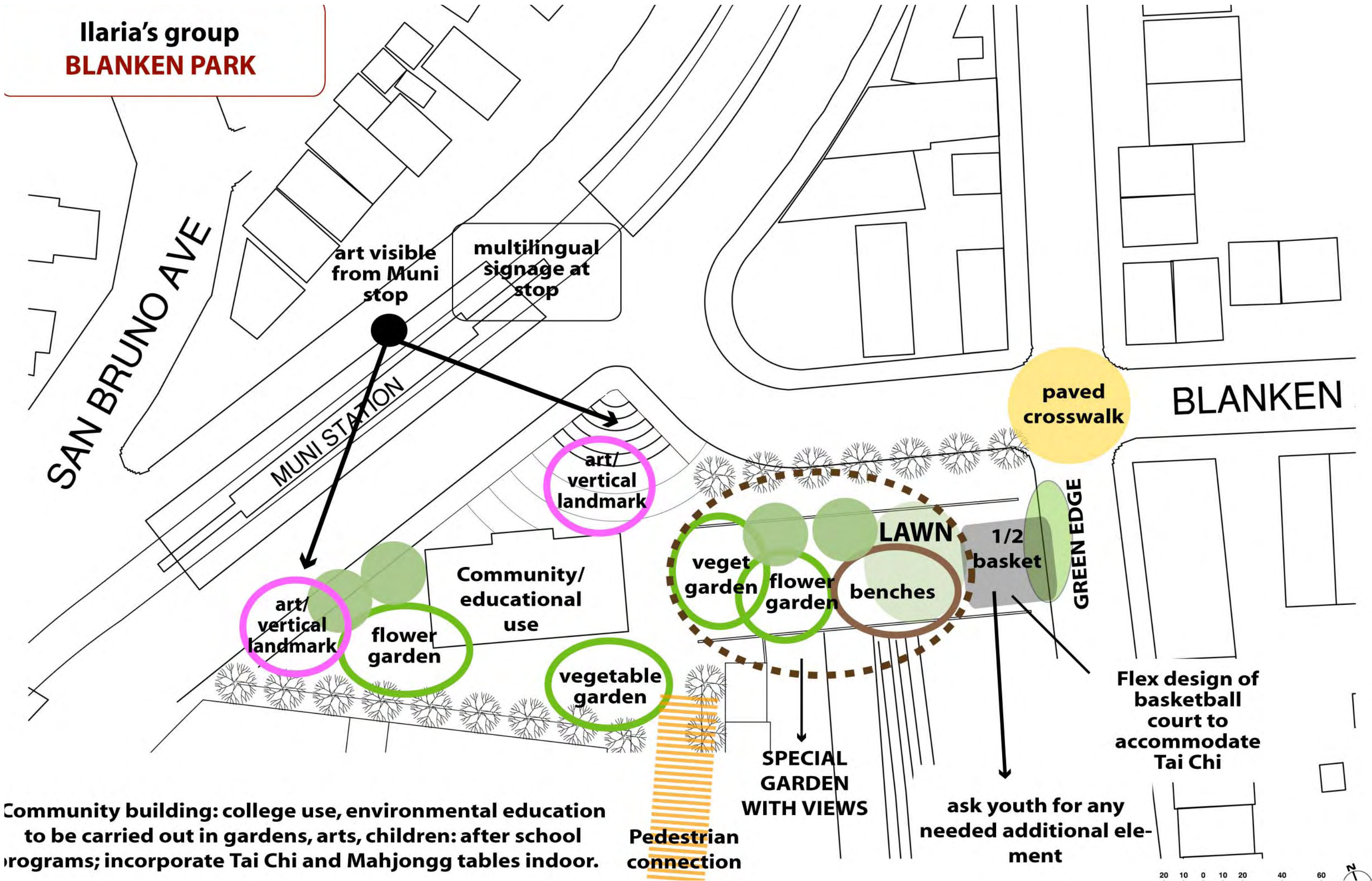
bocce
court

water
feature

Claudia's group
BLANKEN PARK



Ilaria's group
BLANKEN PARK



art visible from Muni stop

multilingual signage at stop

paved crosswalk

art/vertical landmark

art/vertical landmark

flower garden

Community/educational use

vegetable garden

veget garden flower garden benches

LAWN

1/2 basket

GREEN EDGE

SPECIAL GARDEN WITH VIEWS

Flex design of basketball court to accommodate Tai Chi

ask youth for any needed additional element

Community building: college use, environmental education to be carried out in gardens, arts, children: after school programs; incorporate Tai Chi and Mahjongg tables indoor.

Pedestrian connection

**Lisa and Johnny
BLANKEN PARK**

SAN BRUNO AVE

MUNI STATION

Art that reflects history of Schlage

BLANKEN

ART

**paved
crosswalk**

**picnic
tables**

LAWN

**flower
vegetable
garden**

**picnic
tables**

**Community
Center**

**vegetable
garden**

**storm
water
element**

**picnic
tables**

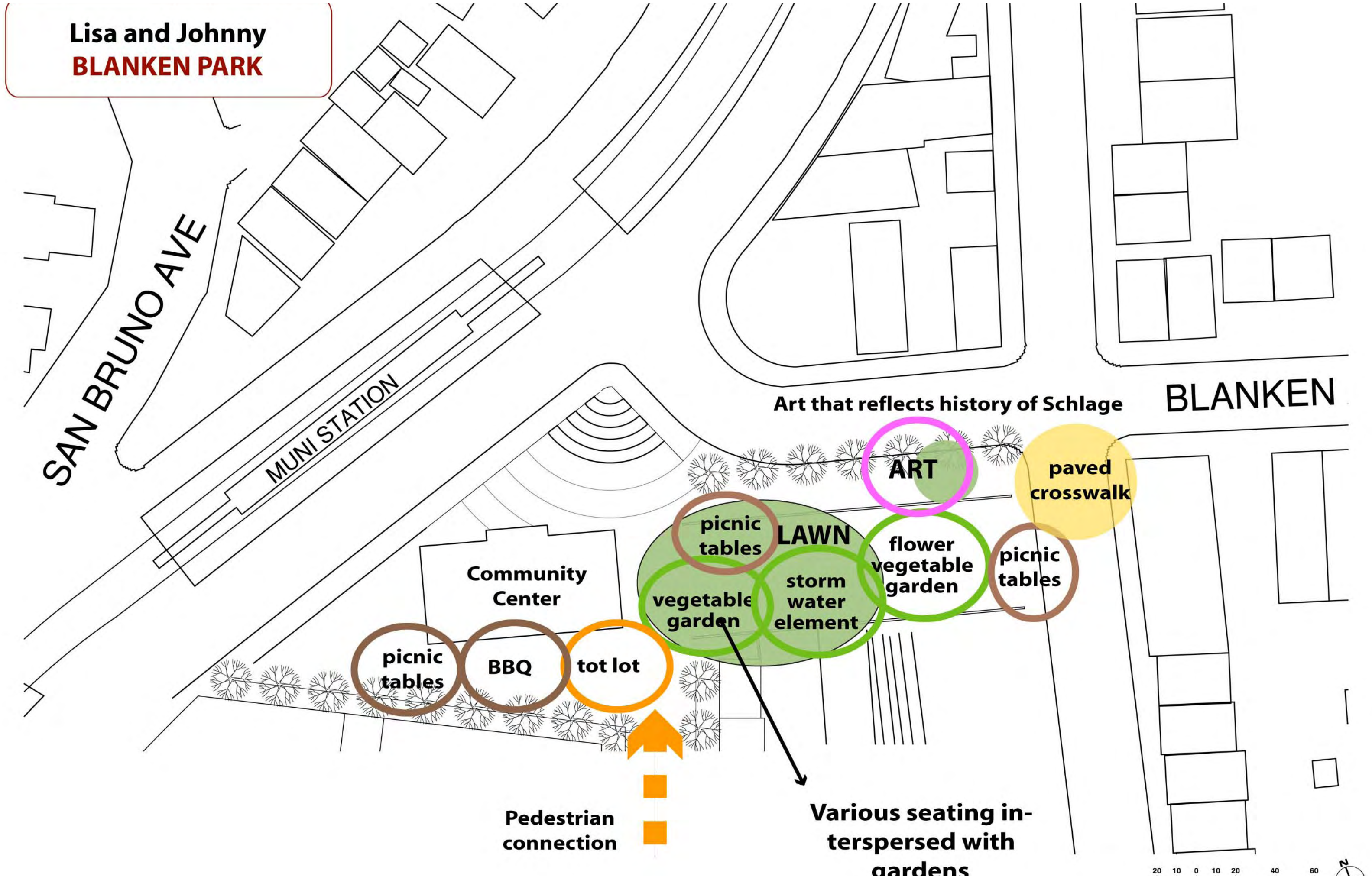
BBQ

tot lot

**Pedestrian
connection**

**Various seating in-
terspersed with
gardens**

20 10 0 10 20 40 60



unknown facilitator
BLANKEN PARK

SAN BRUNO AVE

MUNI STATION

Art that reflects history of Schlage

BLANKEN

Maintain plaza!!!

ART

Community Use

picnic tables

paved area

benches

STAIRS

paved area

Walk with historic markers

