



HOUSING ELEMENT

2022 UPDATE



San Francisco
Planning

Kimia Haddadan
Shelley Caltagirone
Malena Leon-Farrera

March 11, 2021

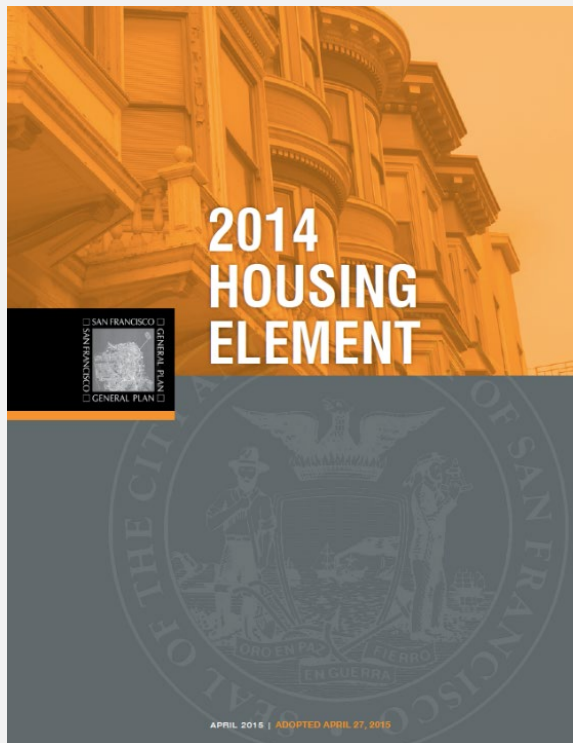


Recognizing the history of this land:

- We begin by reflecting on the fact that we are standing on **Ramaytush Ohlone land.**



How is the Housing Element Used?



Meet State mandates to:

- Maintain the City's eligibility for state **affordable housing funds**
- plan for **certain number of units** estimated by State and regional agencies
- **Affirmatively further fair housing**



Create a roadmap for the future of housing that:

- represents **the values** our communities hold for the future of the City
- defines **priorities** for housing solutions
- guides **decisions** and **resource allocation**

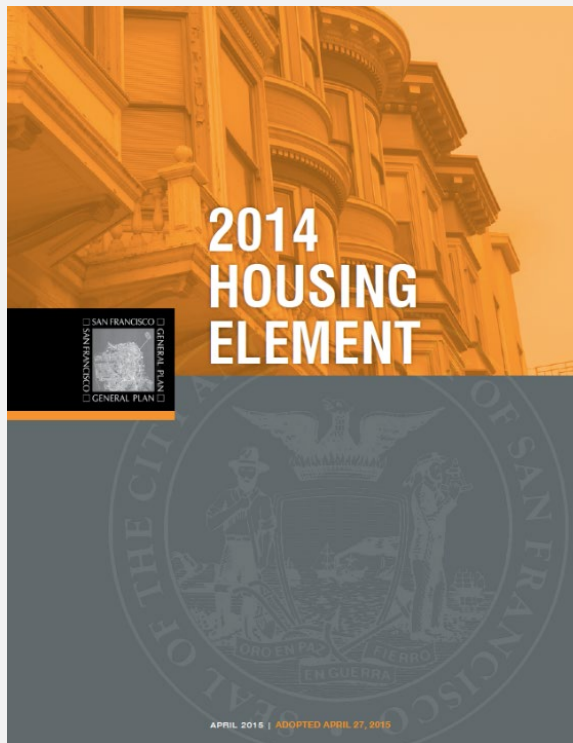
Racial and Social Equity



PLANNING COMMISSION RESOLUTION

...BE IT FURTHER RESOLVED, that the Planning Commission directs the Department to amend the General Plan to incorporate policies that explicitly prioritize racial and social equity for American Indian communities, Black communities, and communities of color; that subsequent amendments to the General Plan utilize a racial and social equity lens; and...

How's the Next Update Different?



San Francisco's **first housing plan centered in racial and social equity.**



Major increase* in the housing **targets** allocated to SF by the regional and State agencies (more than tripled)

* Increase is due to a new formula that factors in existing housing need measured by cost burden, over crowding, etc.

Other State Mandates



Affirmatively Furthering the Fair Housing law

- Address exclusion and discrimination
- Create housing access in high-opportunity neighborhood
- Bring opportunity to segregated and underserved neighborhoods



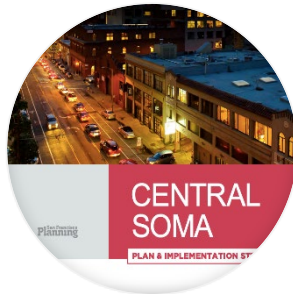
Environmental Justice

Incorporate Environmental Justice policies as required by State Bill 1000 (2016)

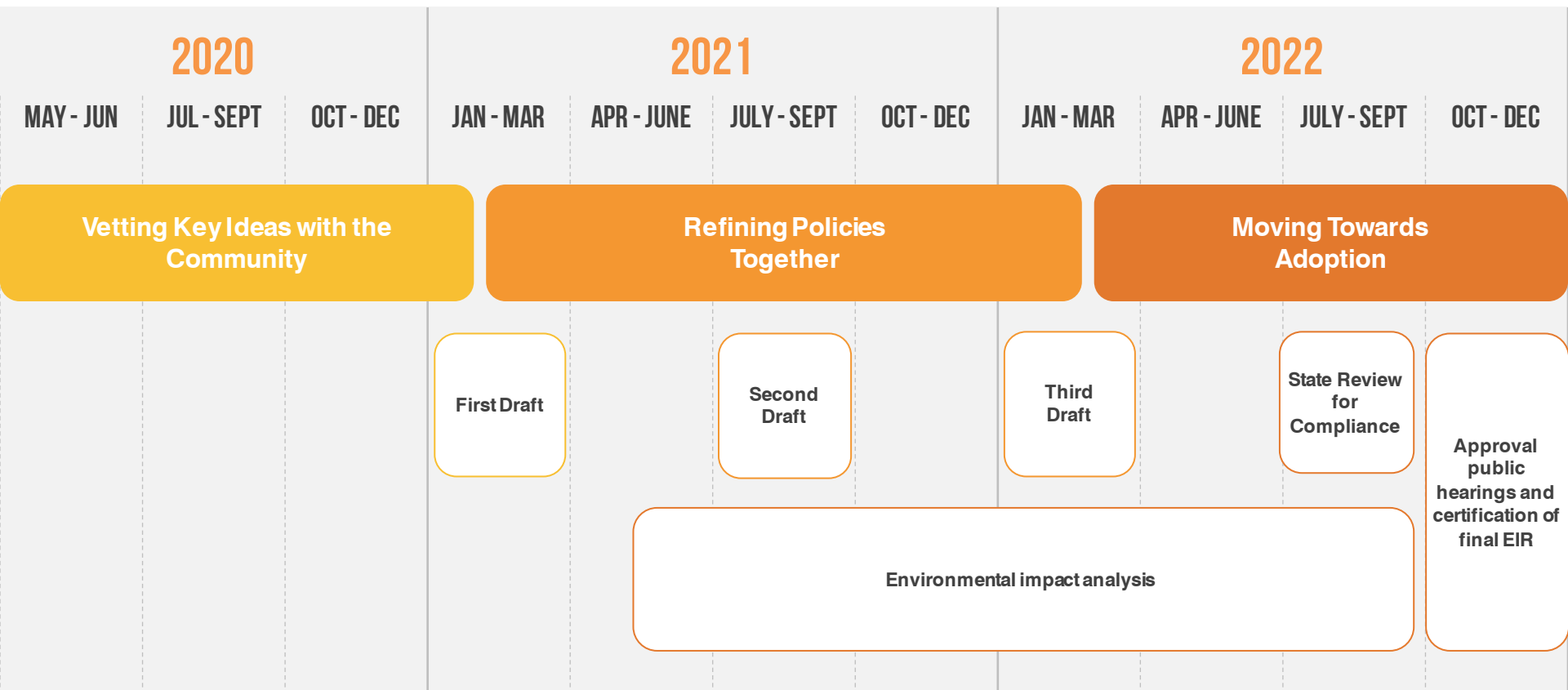
- Adopt policies in General Plan to address “unique or compounded health risks”

Where Did We Start From?

Summarized what we heard from our communities in recent initiatives:



Planning Process and Major Milestones



Public Outreach and Engagement: **Phase 1**

Residents and Community Members



Resident Ambassador Group (HEARD)



Written feedback

- Online participation platform (380 comments)
- Short survey distributed via Resident Ambassadors, CBOs, in-person hubs (1,631 surveys)

Townhalls and Listening Sessions:

- Districts 1
- District 4
- BMAGIC (Bayview Hunters Point)
- YIMBY group
- District 7
- Resident Ambassador Group (HEARD)
- HRC's Community Roundtable
- Four listening sessions one in English, two in Spanish, one in Chinese
- Richmond Senior Center in Chinese
- Fillmore / Western Addition
- La Voz Latina in Spanish (Tenderloin)

Presentations at CBOs:

- Richmond CBOs Monthly Meeting
- MOHCD Eviction Prevention & Tenant Empowerment Working Group Monthly Meeting
- Supervisor Walton's CBO Roundtable Monthly Meeting
- MAP2020 Monthly Meeting
- SOMA Pilipinas Cultural District Planning 101
- BMAGIC Convener Monthly Meeting
- Japanese Cultural District Land Use / Transportation Committee Meeting

Public Outreach and Engagement: **Other Tools**

Housing Policy Group



- Comprised of 40 organizations
- Two rounds of discussions (9 meetings)
- One-on-one follow-ups

Interagency Steering Group



- Core interagency group monthly meetings
- Broad interagency review group (17 agencies) reviewing draft policies and actions

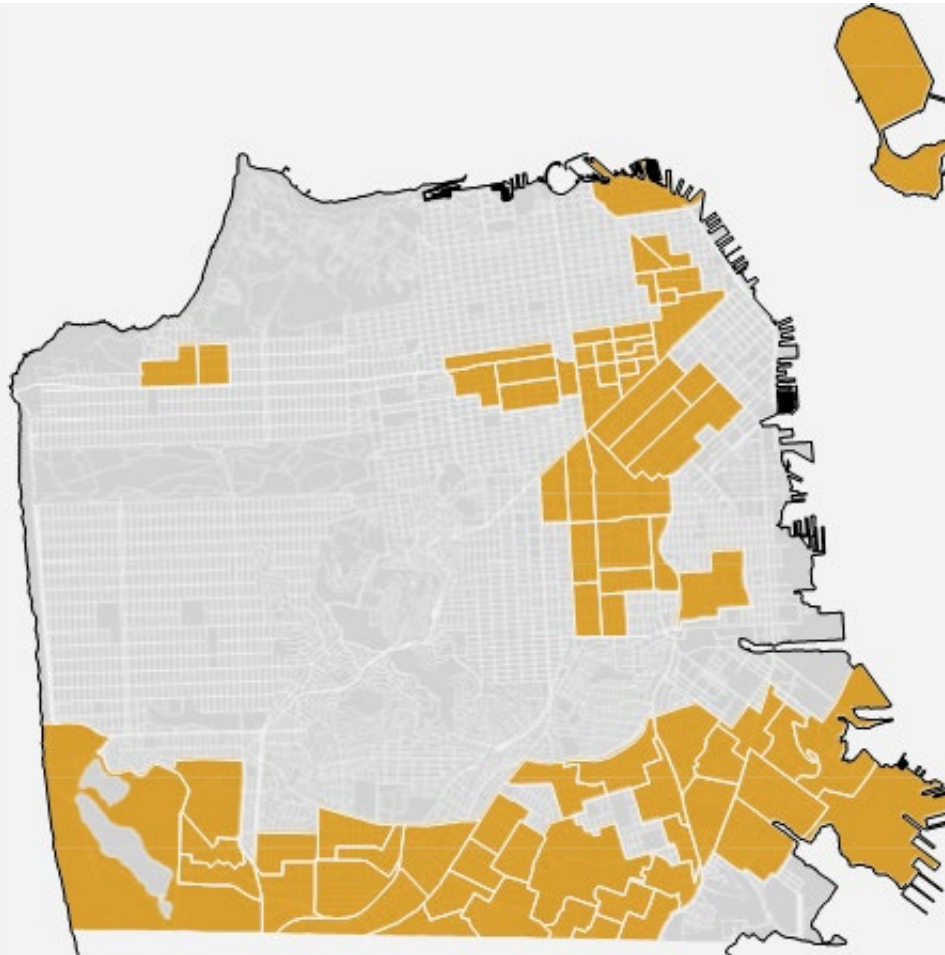
Major Policy Shifts for Consideration: Highlights



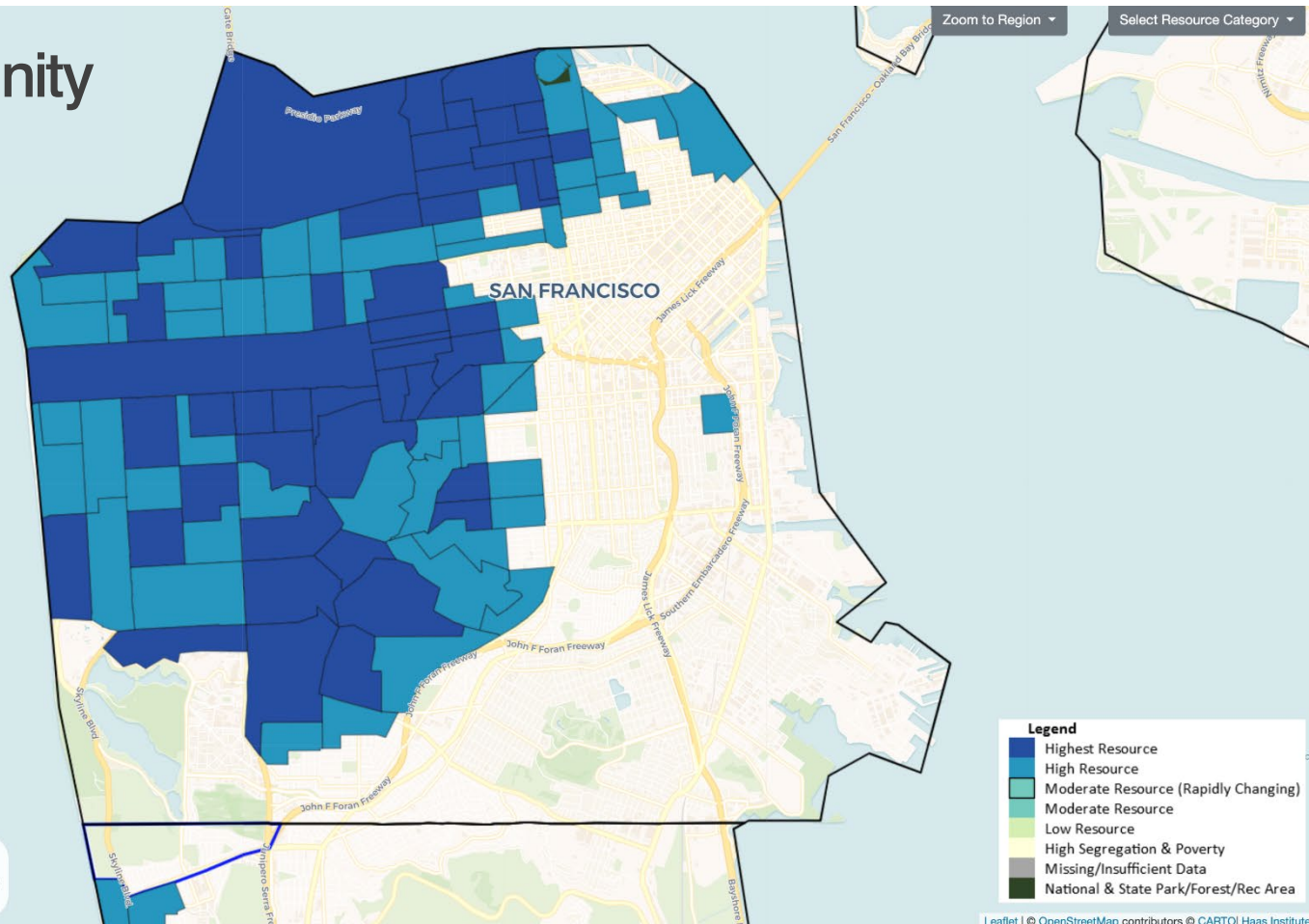
- Increasing investments in programs that would bring back communities displaced due to discriminatory programs
- Recognizing right to housing for unhoused and vulnerable groups including priorities to address racial and social inequities
- Increasing and reallocating resources to Priority Geographies for acquisition and rehab, tenant protections, and homeownership to advance racial equity
- Investing in facilities and infrastructure in Priority Geographies to increase opportunities for residents
- Increase investment in affordable housing to High-Opportunity Areas
- Increase housing choice in High-Opportunity Areas for all income levels and focus on small to mid-rise multi-family buildings

Priority Geographies

SFDPH Areas of Vulnerability (2016)



High-Opportunity Areas



Upcoming Next Steps



**RELEASE OF DRAFT
GOALS, POLICIES AND ACTIONS**



**PHASE II OF OUTREACH
AND ENGAGEMENT**



**ENVIRONMENTAL REVIEW
PUBLIC PROCESS**

Upcoming Outreach and Engagement: **Phase II**



FOCUS GROUPS

- Representing communities of color
- Geographically distributed throughout the city
- Addressing specific topics (ex. Homelessness and supportive services)



HOUSING POLICY GROUP

- Small conversations based on expertise
- Key reviewers/commenters



EQUITY ADVISORY COUNCIL

Subscribe for Updates

sfhousingelement.org

Contact Us:

- Kimia Haddadan – kimia.haddadan@sfgov.org
- Shelley Caltagirone – shelley.caltagirone@sfgov.org
- Malena Leon-Farrera – malena.leon-farrera@sfgov.org
- Using our contact form: <https://sfhousingelement.org/contact-us>



Housing Element

2022 UPDATE

*SHAPING THE FUTURE OF HOUSING
IN SAN FRANCISCO*

sfhousingelement.org