



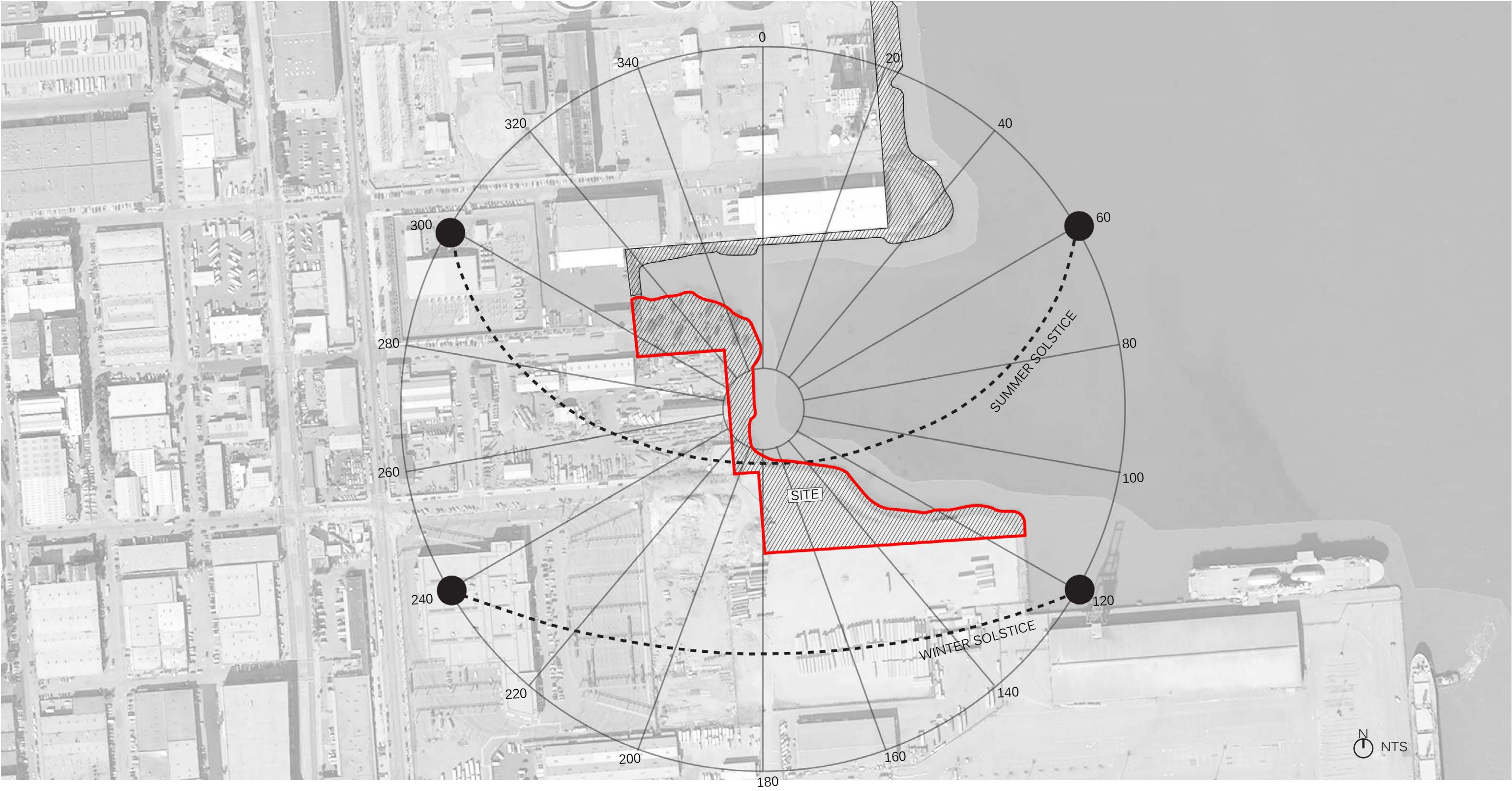
WARM WATER COVE

SCHEMATIC DESIGN



SITE VIEWS





PORT SAN FRANCISCO

FLETCHER STUDIO

CENTRAL WATERFRONT
DOGPATCH
PUBLIC REALM
PLAN





- 1 ENTRY PLAZA
- 2 BRIDGE
- 3 COASTAL SALT MARSH
- 4 HAMMOCK GARDEN
- 5 DOGRUN
- 6 LAWN
- 7 GABION WALL SEAT TERRACES
- 8 NATIVE WETLANDS
- 9 OUTDOOR SEATING AREA
- 10 DRUMLIN LANDSCAPE MOUNDS
- 11 ART PAVILION
- 12 CONNECTION TO BLUE-GREEN WAY
- 13 POTENTIAL SCULPTURE LOCATION
- 14 PUBLIC FLEX SPACE
- 15 FLEXIBLE CONCESSION SPACE
- 16 RAISED BOARDWALK


This schematic concept and previous versions of the rendered schematic plan (8/9/2017) have not yet been fully reviewed all the divisions of the Recreation and Park Department. The Recreation and Park Department will start a park detail design process later this year, building on the work that we've achieved through the Public Realm Plan. The typical Recreation and Park Department design process will make decisions regarding final material choices, alignment of paths, width of paths, plant selection, and other aspects. This schematic plan shown here may change through the typical Recreation and Park Department process. However, this schematic represents what we've heard as the community feedback for preferred programs and amenities, size and rough allocation of functional program areas; and will inform the next phase of park design.





- 1 ENTRY PLAZA
- 2 BRIDGE
- 3 COASTAL SALT MARSH
- 4 HAMMOCK GARDEN
- 5 DOGRUN
- 6 LAWN
- 7 GABION WALL SEAT TERRACES
- 8 NATIVE WETLANDS
- 9 OUTDOOR SEATING AREA
- 10 DRUMLIN LANDSCAPE MOUNDS
- 11 ART PAVILION
- 12 CONNECTION TO BLUE-GREEN WAY
- 13 POTENTIAL SCULPTURE LOCATION
- 14 PUBLIC FLEX SPACE
- 15 FLEXIBLE CONCESSION SPACE
- 16 RAISED BOARDWALK

This schematic concept and previous versions of the rendered schematic plan (8/9/2017) have not yet been fully reviewed all the divisions of the Recreation and Park Department. The Recreation and Park Department will start a park detail design process later this year, building on the work that we've achieved through the Public Realm Plan. The typical Recreation and Park Department design process will make decisions regarding final material choices, alignment of paths, width of paths, plant selection, and other aspects. This schematic plan shown here may change through the typical Recreation and Park Department process. However, this schematic represents what we've heard as the community feedback for preferred programs and amenities, size and rough allocation of functional program areas; and will inform the next phase of park design.

 1"=40'-0"



- 1 ENTRY PLAZA
- 2 BRIDGE
- 3 COASTAL SALT MARSH
- 4 HAMMOCK GARDEN
- 5 DOGRUN
- 6 LAWN
- 7 GABION WALL SEAT TERRACES
- 8 NATIVE WETLANDS
- 9 OUTDOOR SEATING AREA
- 10 DRUMLIN LANDSCAPE MOUNDS
- 11 ART PAVILION
- 12 CONNECTION TO BLUE-GREEN WAY
- 13 POTENTIAL SCULPTURE LOCATION
- 14 PUBLIC FLEX SPACE
- 15 FLEXIBLE CONCESSION SPACE
- 16 RAISED BOARDWALK

This schematic concept and previous versions of the rendered schematic plan (8/9/2017) have not yet been fully reviewed all the divisions of the Recreation and Park Department. The Recreation and Park Department will start a park detail design process later this year, building on the work that we've achieved through the Public Realm Plan. The typical Recreation and Park Department design process will make decisions regarding final material choices, alignment of paths, width of paths, plant selection, and other aspects. This schematic plan shown here may change through the typical Recreation and Park Department process. However, this schematic represents what we've heard as the community feedback for preferred programs and amenities, size and rough allocation of functional program areas; and will inform the next phase of park design.

1"=40'-0"



ENTRY - CIVIC PLAZAS PROVIDE WELCOMING ENTRY INTO SITE, FRAMING VIEWS OF THE BAY WHILE TRANSITIONING FROM STREET TO WETLANDS. DESIGN IS OPEN WITH LIGHTING & FLEX SPACE FOR PUBLIC GATHERING

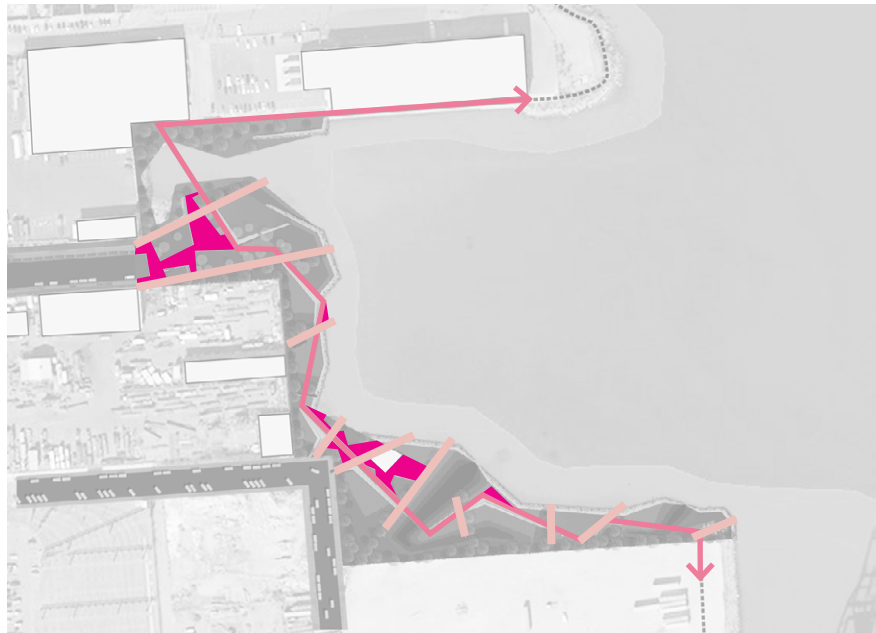


PRIMARY CIRCULATION + HARDSCAPE PATHWAYS RESPONDING TO WATER'S EDGE AND WETLANDS. PATHWAYS TO REMAIN OPEN, TO ENHANCE VIEWS OF BAY AND WETLANDS



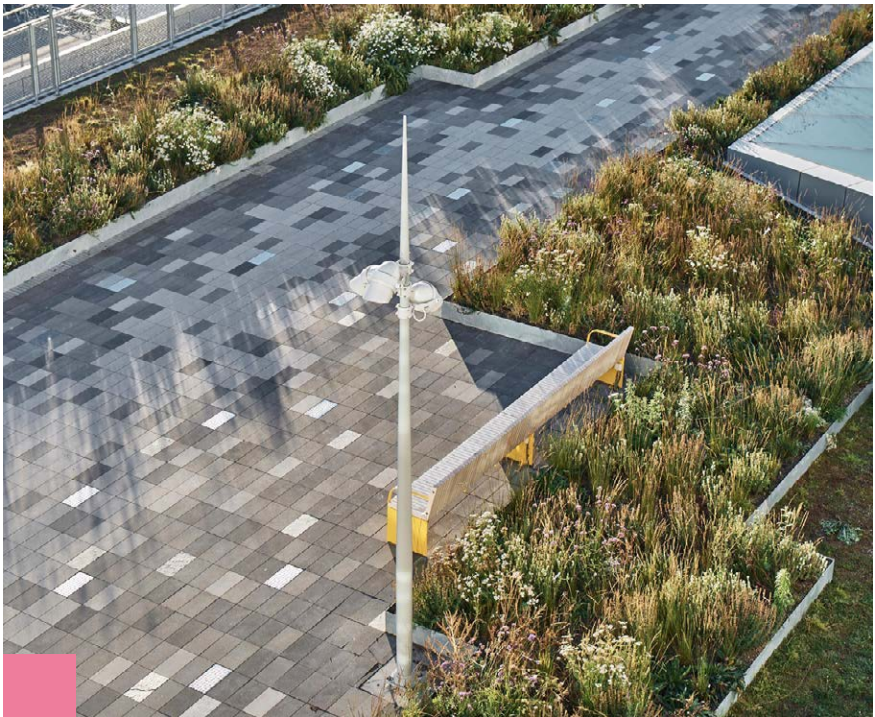
SECONDARY CIRCULATION - SEMI-TRANSPARENT, RAISED PATHWAYS CALL ATTENTION TO PERFORMATIVE ASPECTS OF WETLANDS AND HELP VISITORS FEEL IMMERSSED IN SITE

KEY

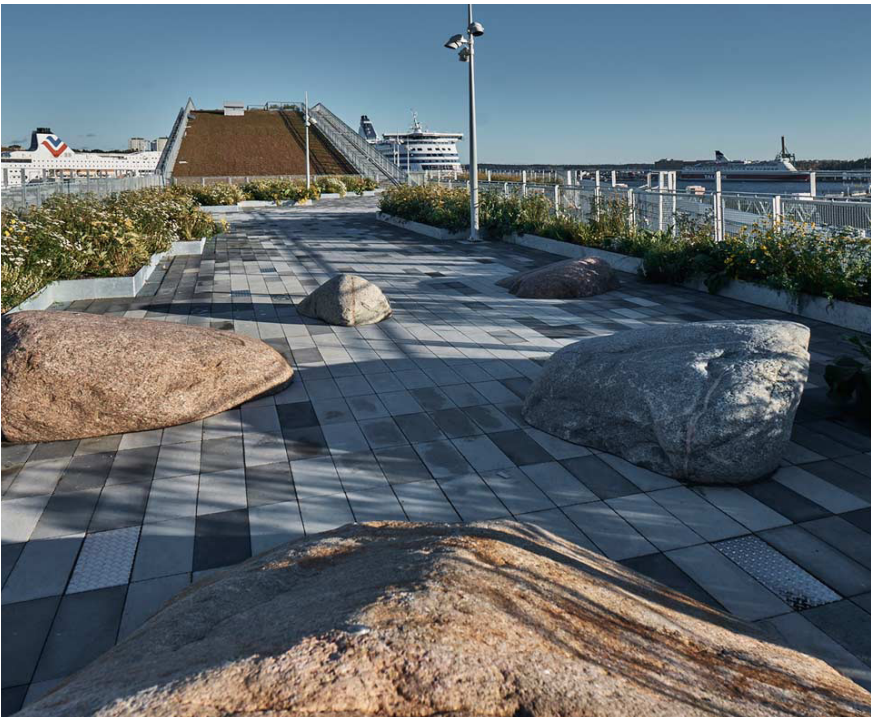




INTEGRAL COLOR CONCRETE WITH VARYING SCALES AND TEXTURES ADD DIVERSITY TO EXPERIENCE AND RELATE PAVING BACK TO CONC EDGE



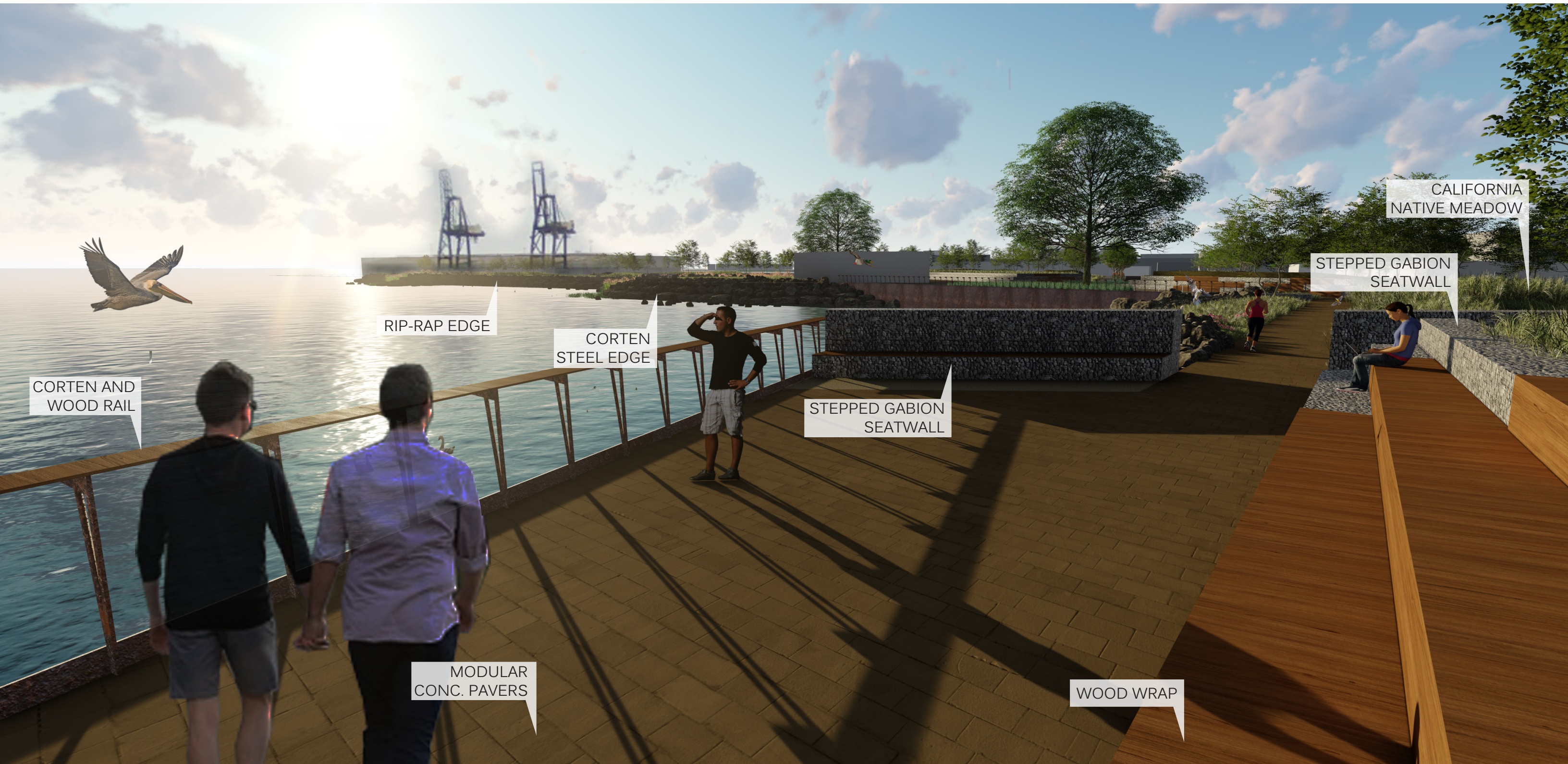
UNIT PAVERS COME IN A VARIETY OF COLORS, ALLOWING FOR THE DEVELOPMENT OF PATTERN AND MOVEMENT THROUGH A SPACE



PATHWAYS CAN BE INTERRUPTED BY NATURAL ELEMENTS, WHICH PROVIDE PLACES FOR SEATING AND PLAY

KEY







TEXTURED/PATTERNED CONCRETE PAVING

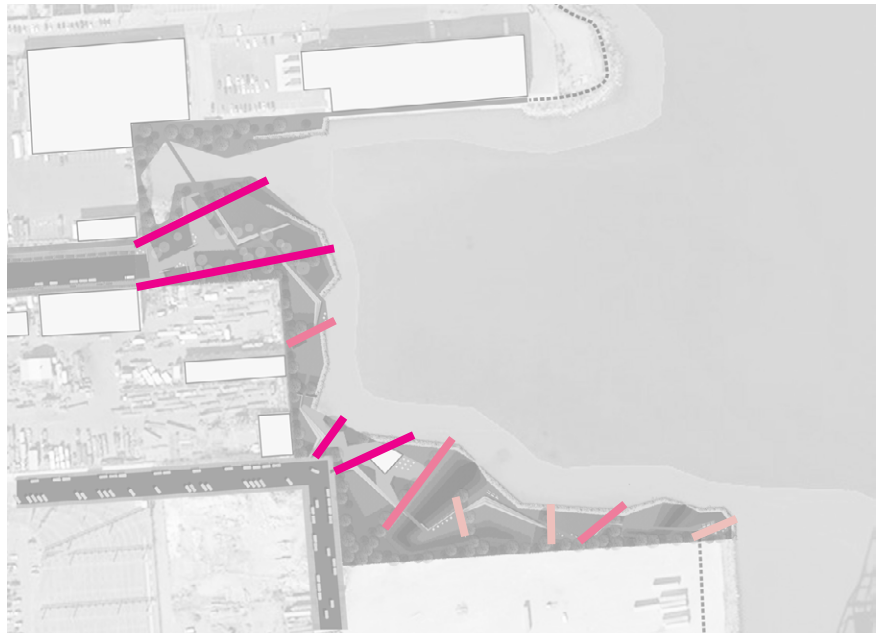


WOOD

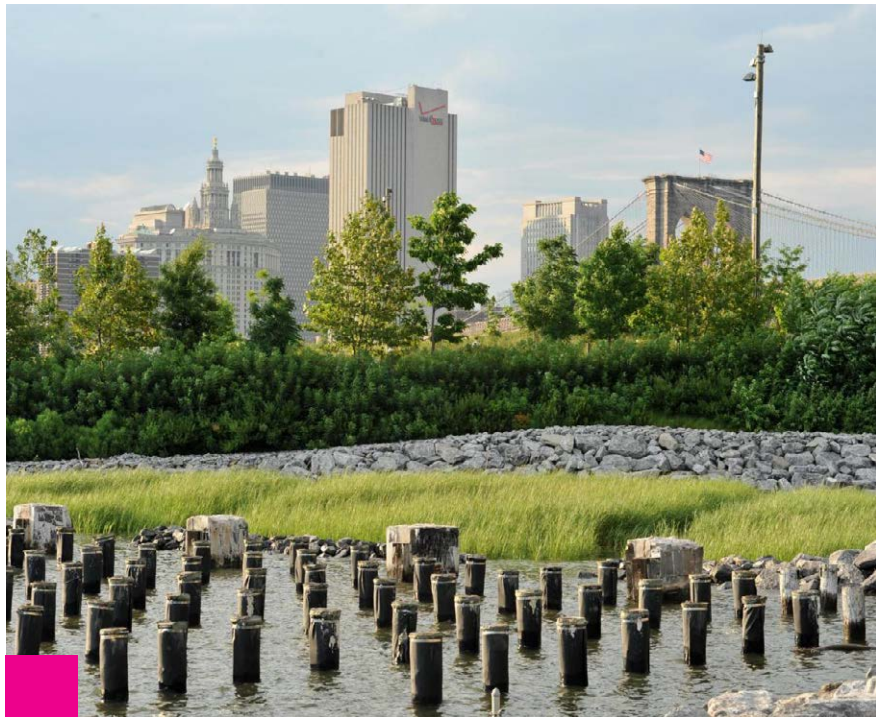


METAL - PROVIDES GREATER TRANSPARENCY, BRINGING AWARENESS TO THE SURROUNDING HABITAT

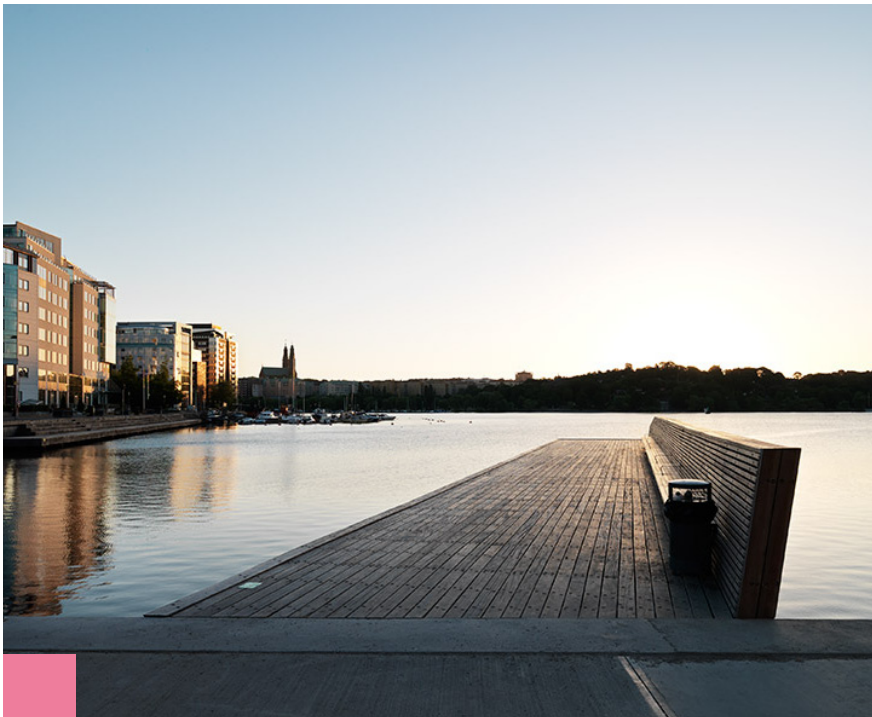
KEY







PIER POSTS - PROTECT NEW MARSHLAND EDGE WHILE PROVIDING REMINDER OF LOCAL HISTORY



FLOATING PIER - LOW-IMPACT STRUCTURE ALLOWS VISITORS TO ENGAGE WITH WATER'S EDGE



FOG GARDEN

KEY





ART PAVILION



SCULPTURE GARDEN



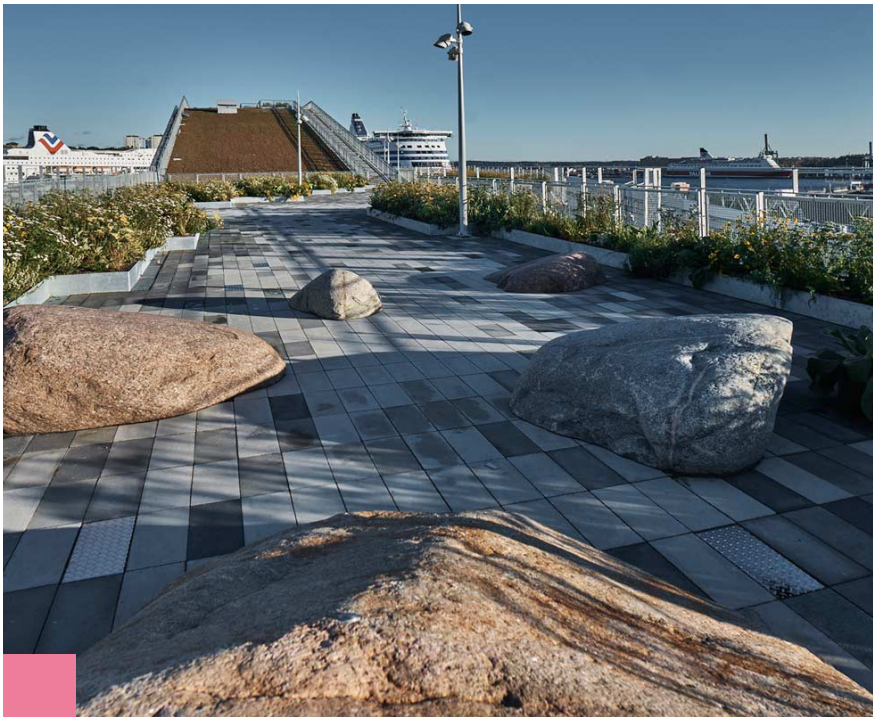
STEEL PERGOLA WITH STRING LIGHTING + MOVABLE FURNITURE

KEY





HAMMOCK GARDEN



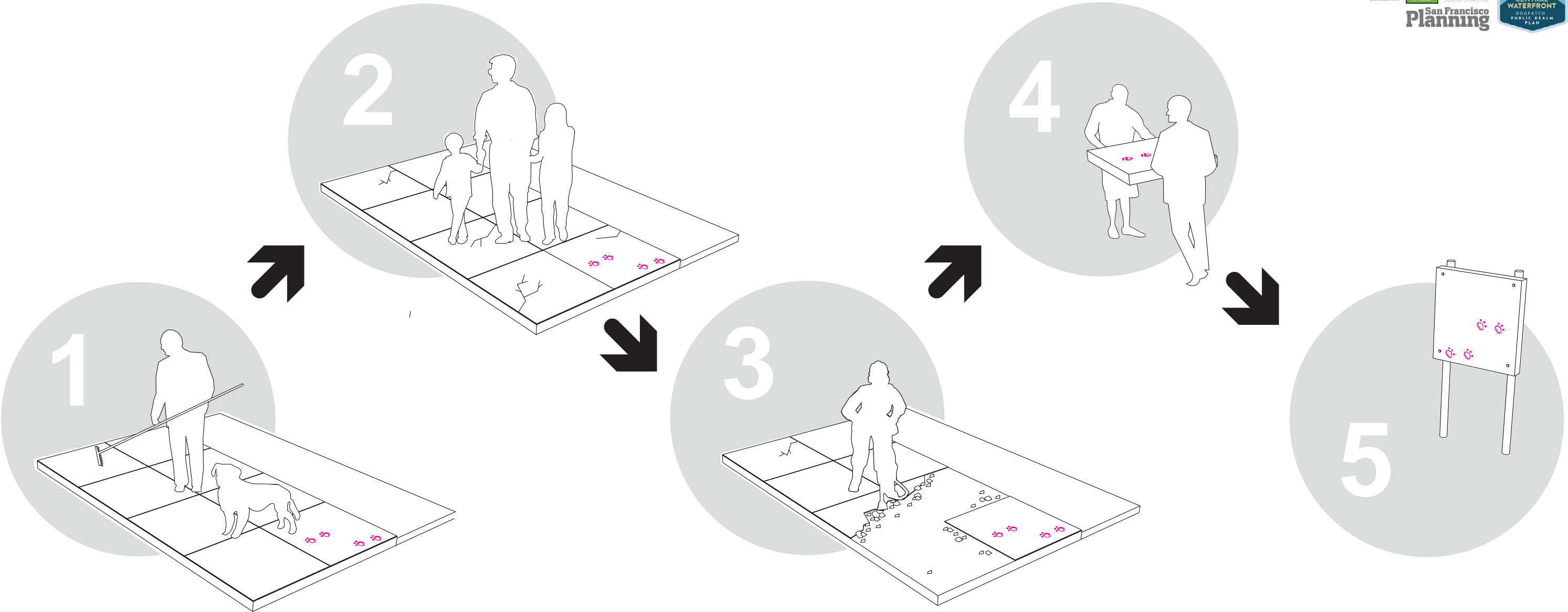
BOULDER FIELD



GABION WALLS

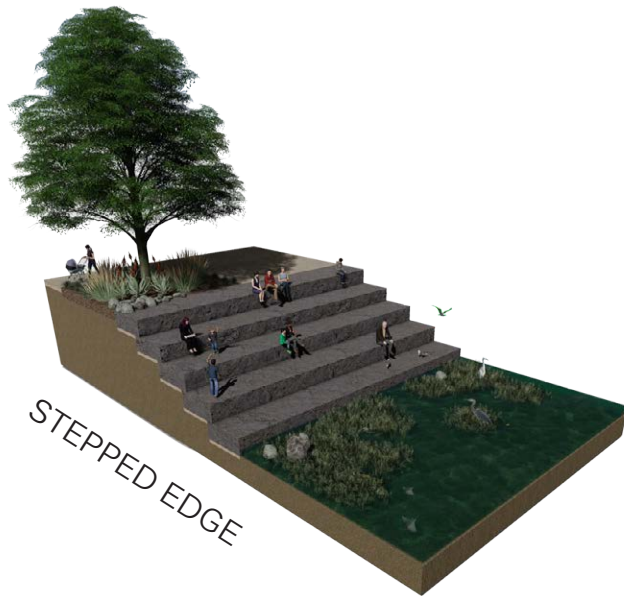
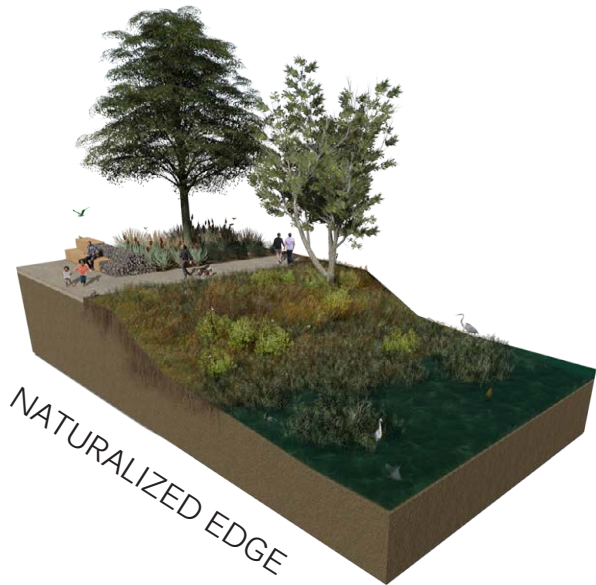
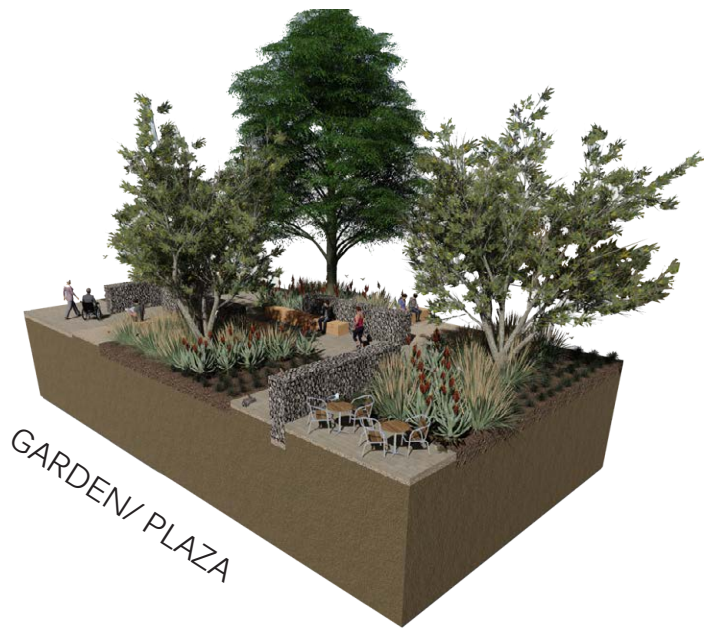
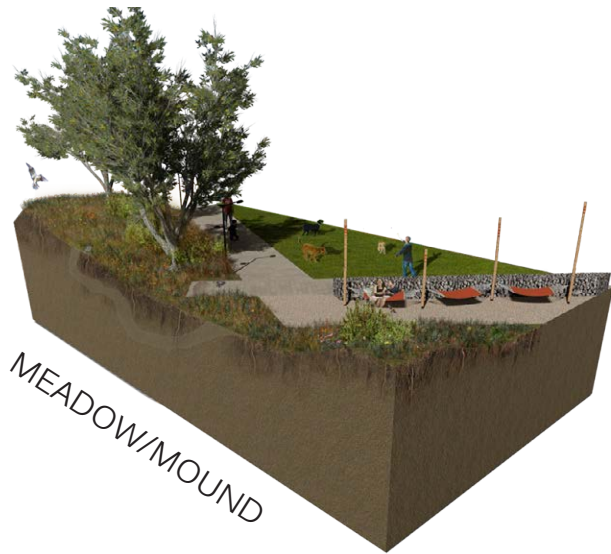
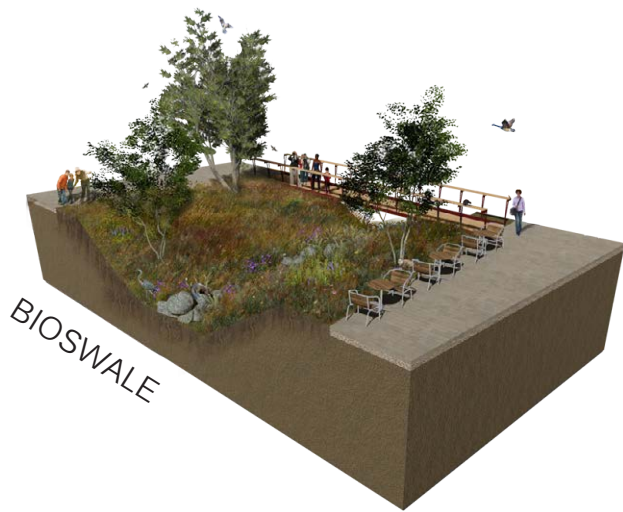
KEY





1. PRINTS ARE MADE WHILE CONCRETE IS LAID
2. CONCRETE AGES, CRACKS FORM
3. CONCRETE IS DEMOLISHED FOR RECONSTRUCTION
4. PRINTS SAVED, CARVED FROM GROUND
5. PRINTS BROUGHT TO SITE, PLACED IN 'MUSEUM OF CONCRETE', OUTDOOR ART GALLERY







- Juncus patens*
- Iris douglasiana*
- Cercis occidentalis*
- Platanus racemosa*
- Carex divulsa*
- Fragaria chiloensis*
- Polystichum munitum*

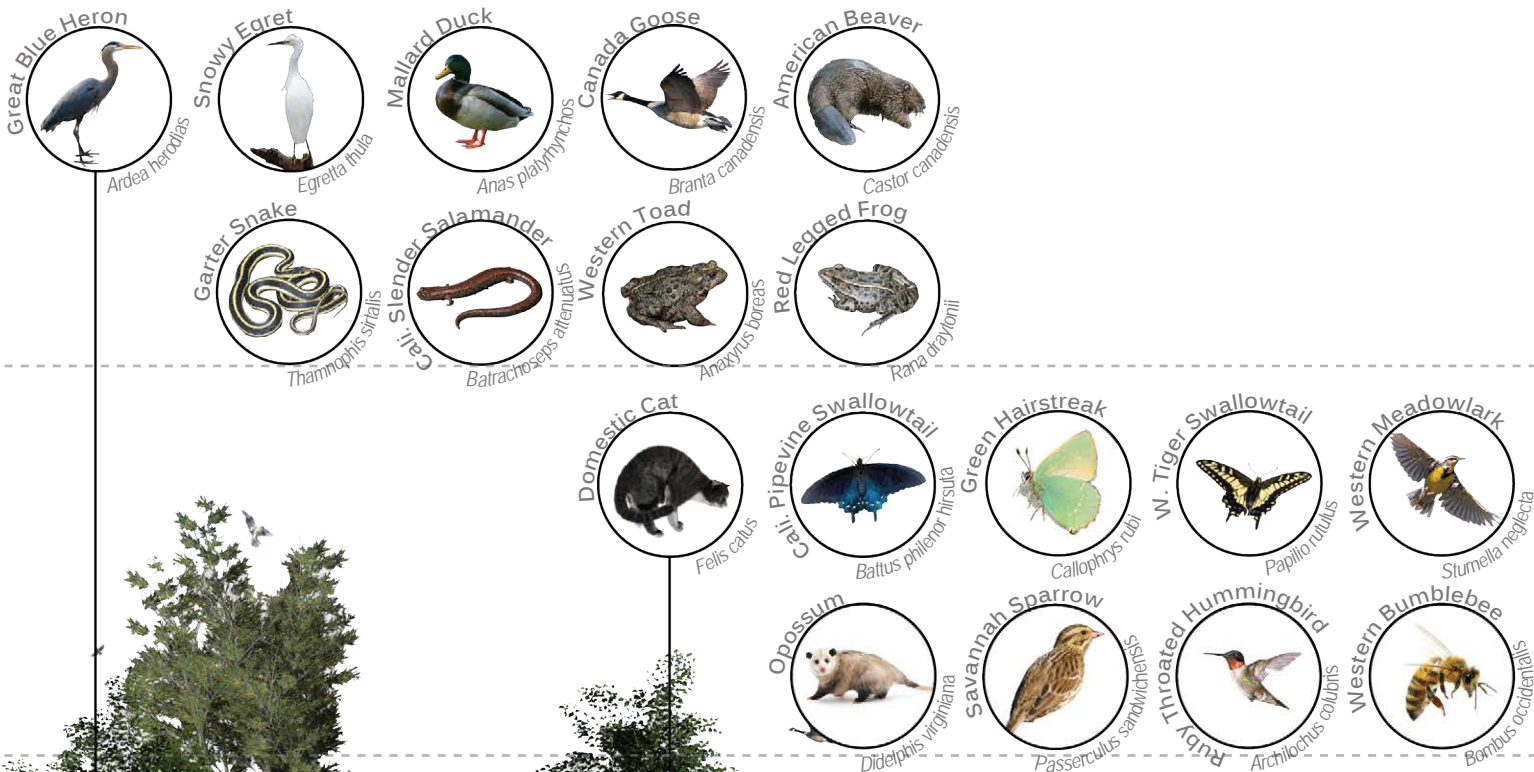
SWALE



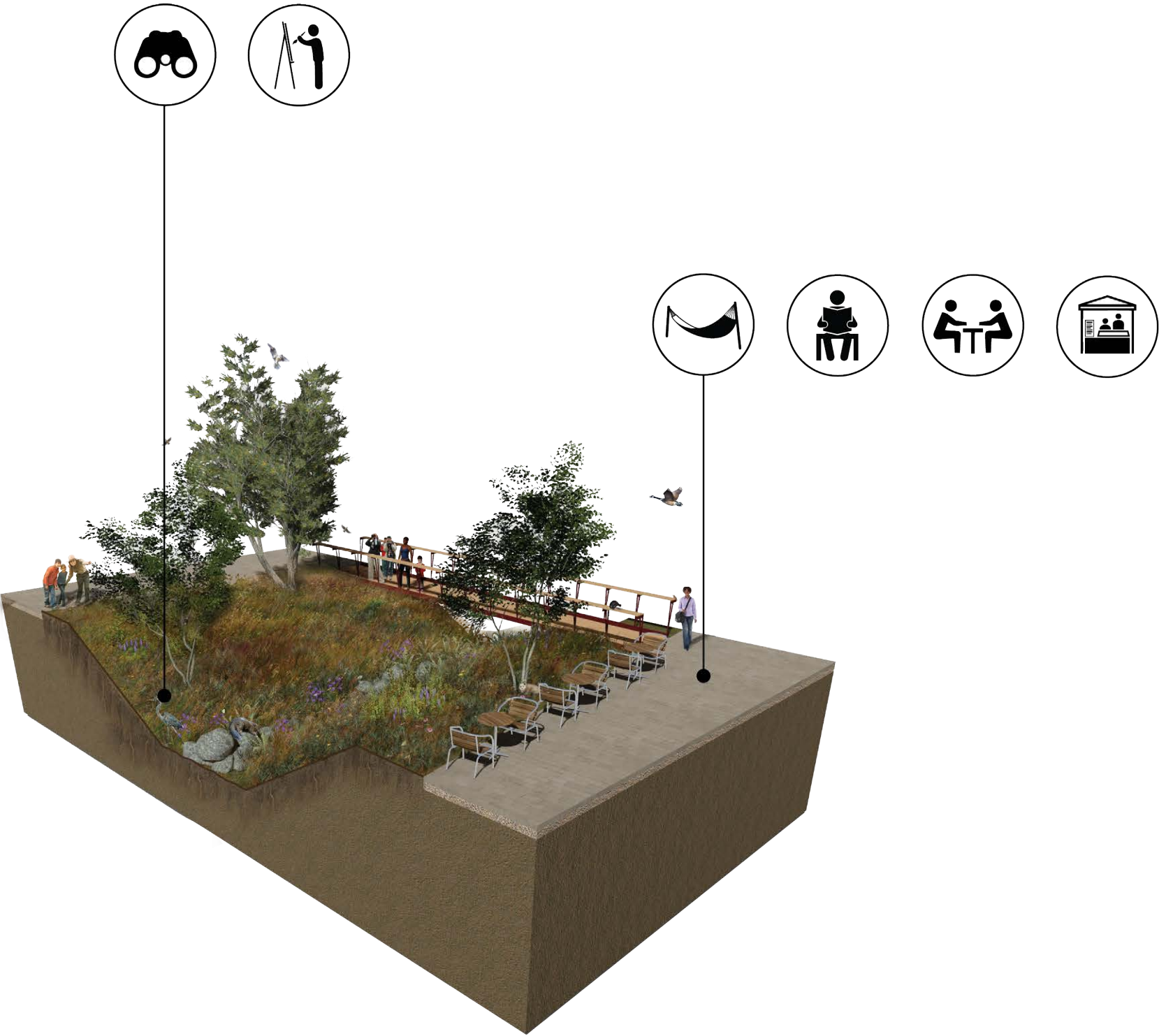
- Lupinus chamissonis*
- Achillea millefolium*
- Sanicula bipinnatifida*
- Iris douglasiana*
- Solidago californica*
- Danthonia californica*
- Stipa pulchra*

COASTAL SCRUB

KEY



KEY





NATIVE WILDLIFE GARDEN



LAWN

KEY



Artemisia californica
Ceanothus
Arctostaphylos
Mimulus spp.
Salvia spp.
Aster chilensis
Phormium tenax

Festuca rubra
Achillea millefolium
Carex panza
Agrostis pallens
Achillea millefolium
Festuca idahoensis
Festuca occidentalis

Western Bluebird
Sialia mexicana

Downy Woodpecker
Picoides pubescens

Western Meadowlark
Sturnella neglecta

Northern Mockingbird
Mimus polyglottos

Grasshopper Sparrow
Ammodramus saramanum

Savannah Sparrow
Passerculus sandwichensis

California Quail
Callipepla californica

Ruby Throated Hummingbird
Archilochus colubitis

Western Bumblebee
Bombus occidentalis

W. Tiger Swallowtail
Papilio rutulus

Monarch
Danaus plexippus

Green Hairstreak
Callophrys rubi

West Coast Lady
Vanessa annabella

Cali. Ground Squirrel
Otospermophilus beecheyi

Garter Snake
Thamnophis sirtalis

Slender Salamander
Batrachoseps attenuatus

Western Bumblebee
Bombus occidentalis

Domestic Dog
Canis lupis familiaris

Domestic Cat
Felis catus

Brush Rabbit
Sylvilagus bachmani

Deer Mouse
Peromyscus maniculatus

Western Fence Lizard
Sceloporus occidentalis







- Artemisia californica*
- Ceanothus*
- Arctostaphylos*
- Mimulus* spp.
- Salvia* spp.
- Aster chilensis*
- Phormium tenax*

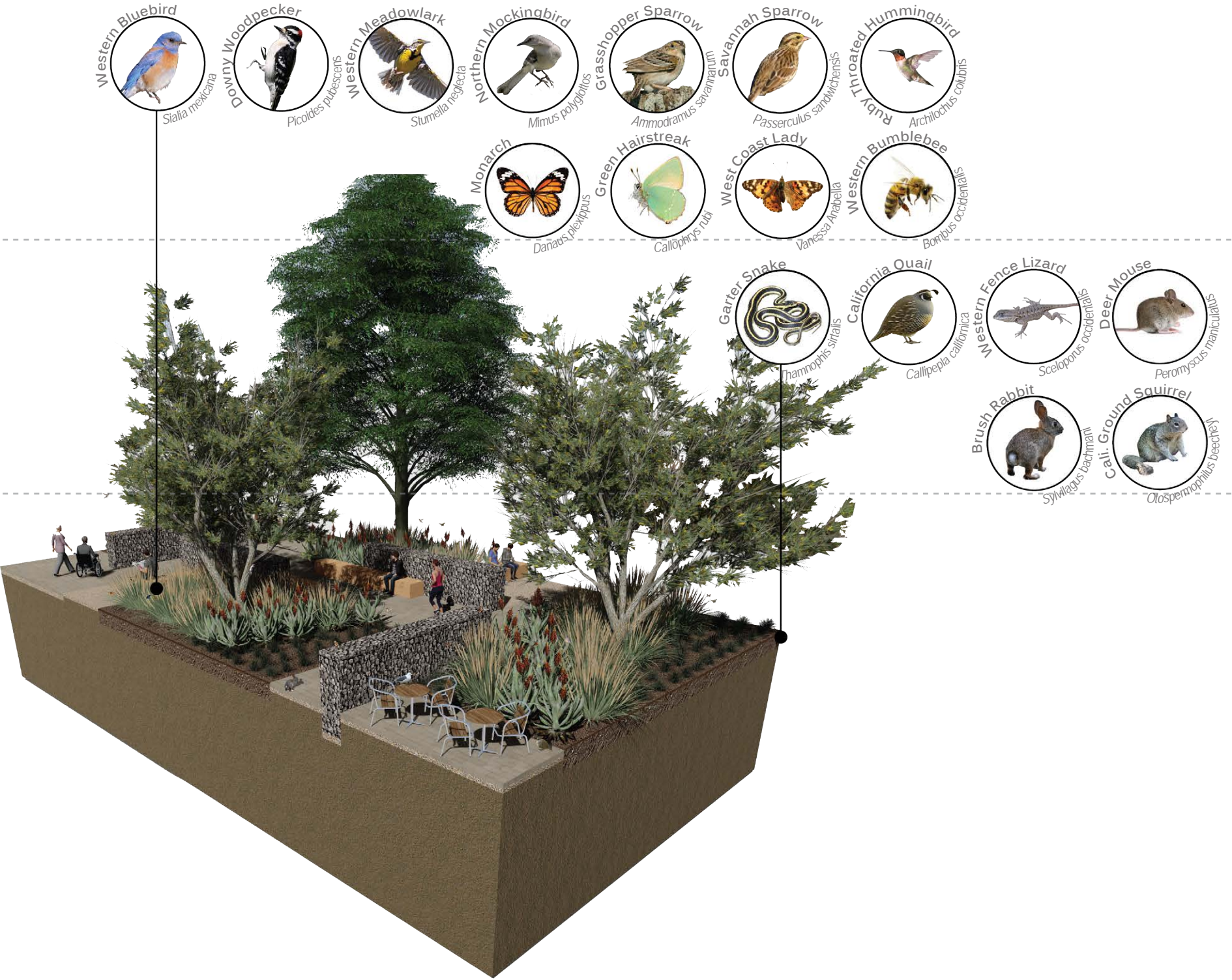
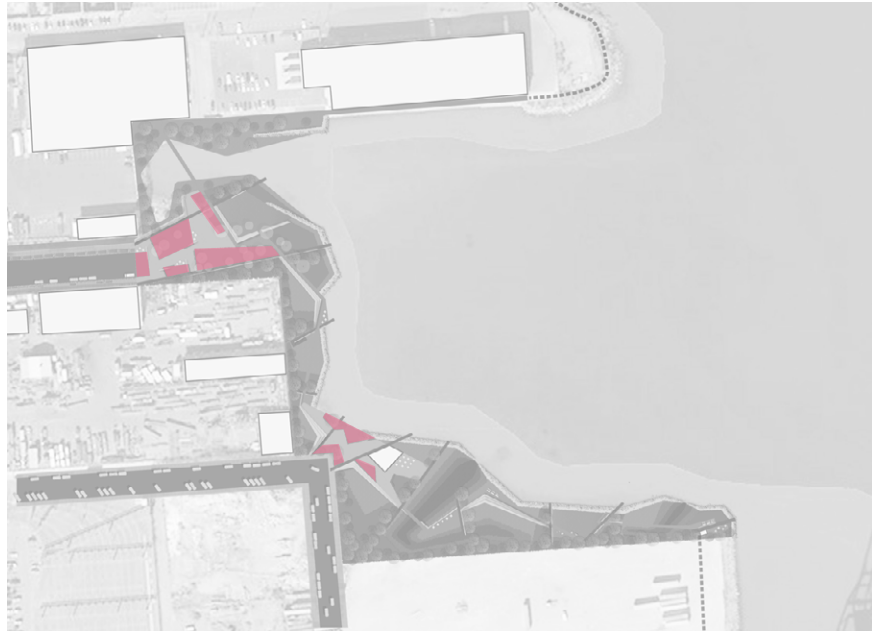
NATIVE WILDLIFE GARDEN

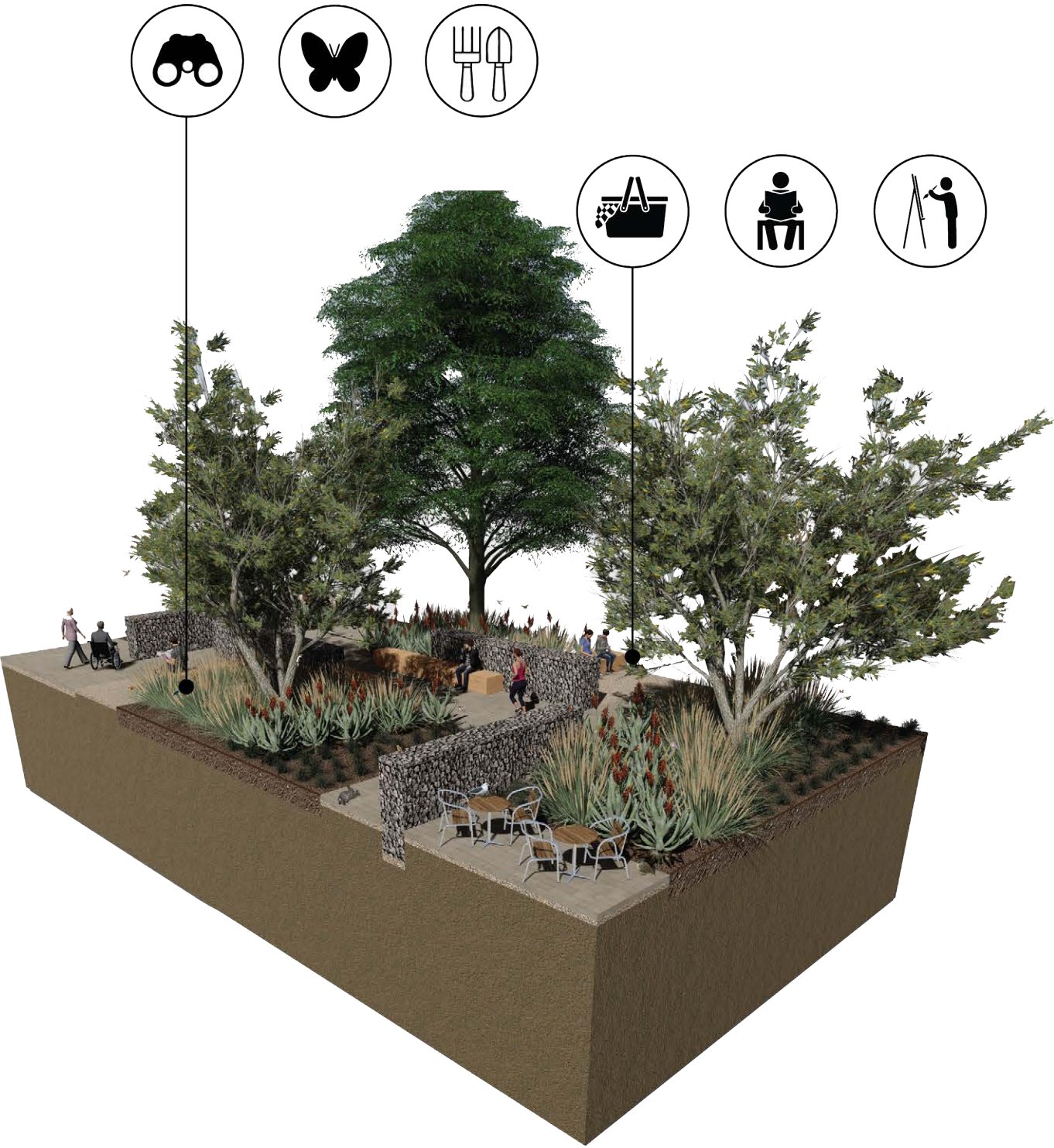


- Carex divulsa*
- Erigeron karvinskianus*
- Ceanothus*
- Artemisia californica*
- Mimulus*
- Rhamnus*
- Lepechinia calycina*

UNDERBRUSH

KEY







- Lupinus chamissonis*
- Achillea millefolium*
- Sanicula bipinnatifida*
- Iris douglasiana*
- Solidago californica*
- Danthonia californica*
- Stipa pulchra*

COASTAL SCRUB/MEADOW



- Carex divulsa*
- Erigeron karvinskianus*
- Ceanothus*

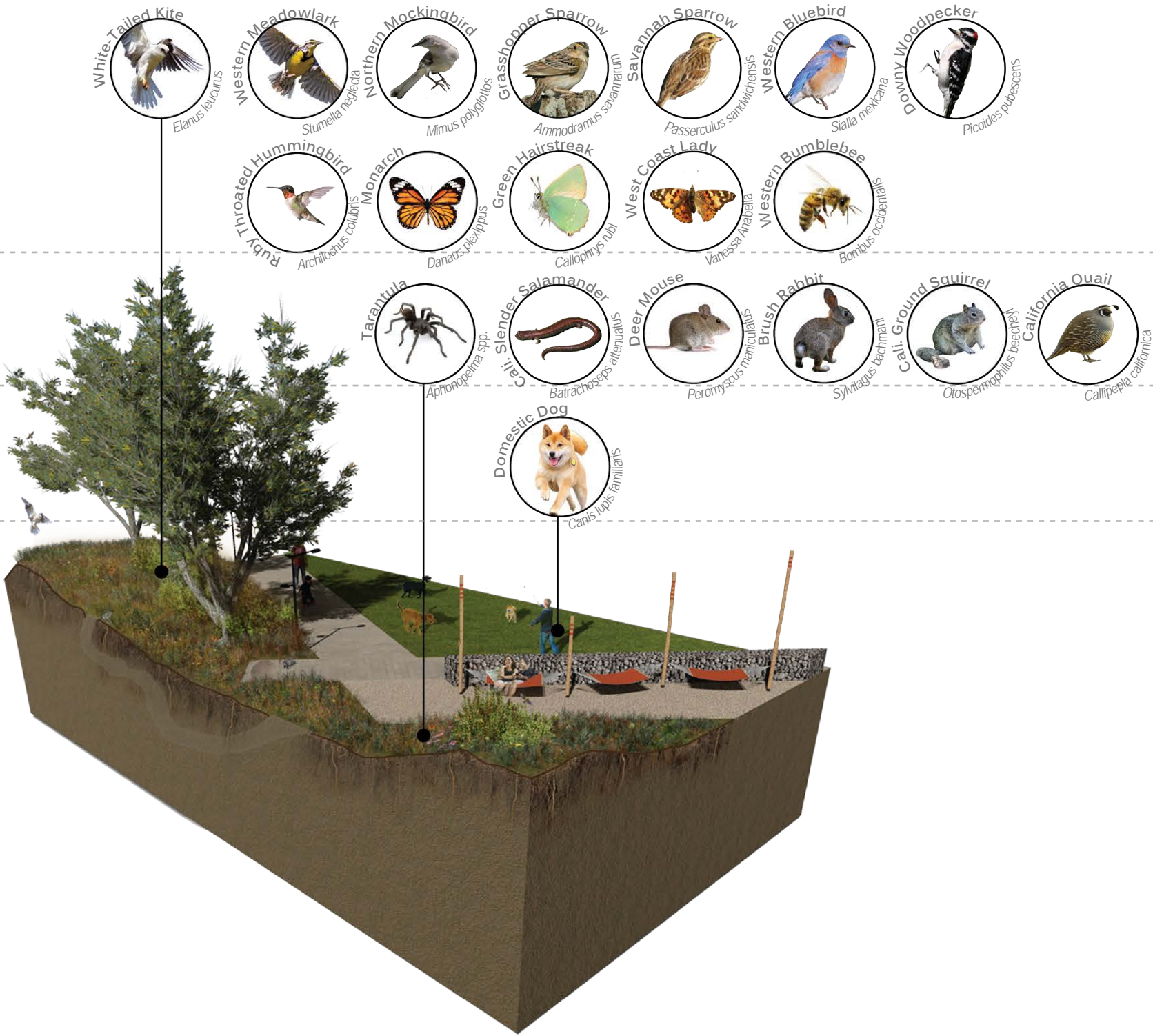
UNDERBRUSH

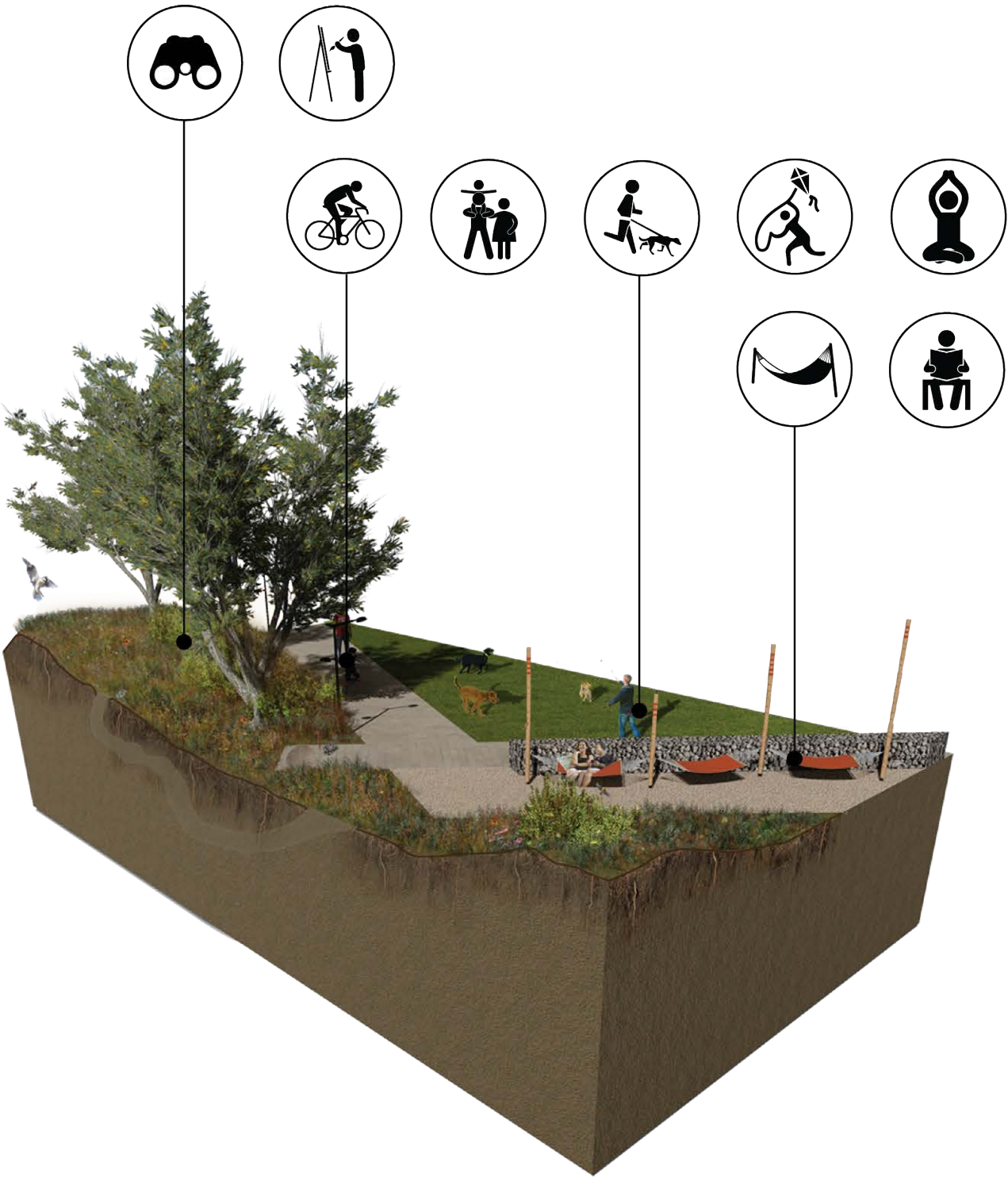


- Festuca rubra*
- Achillea millefolium*
- Festuca idahoensis*

LAWN

KEY







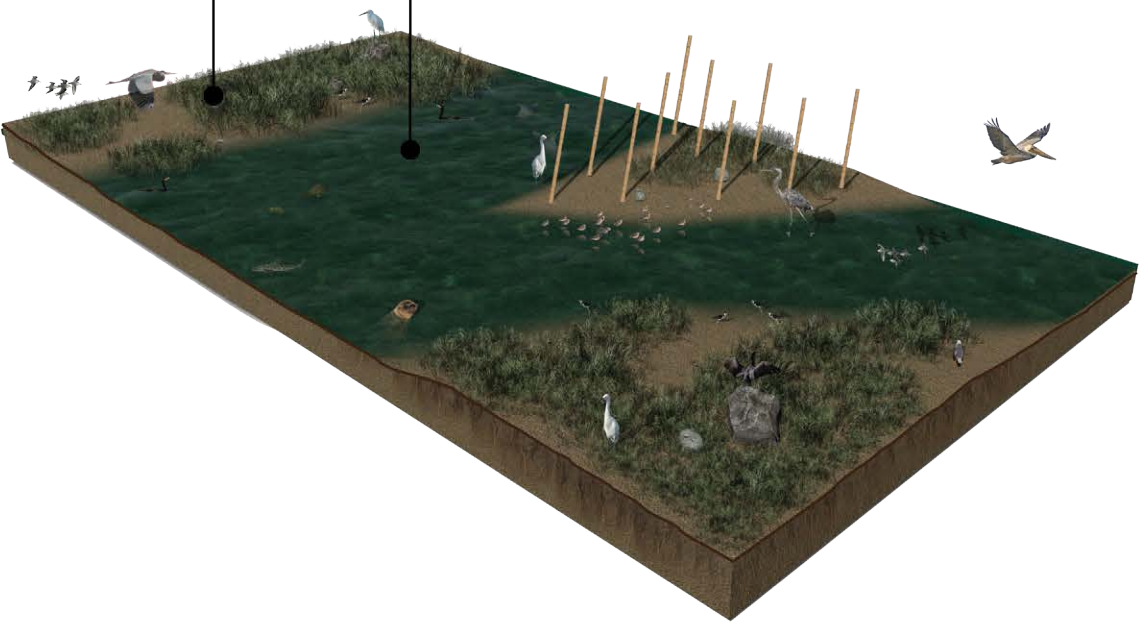
- Limonium sinuatum*
- Suaeda californica*
- Frankenia*
- Salicornia*
- Cuscuta*
- Spartina foliosa*
- Scirpus robustus*

MARSH/MUDFLAT

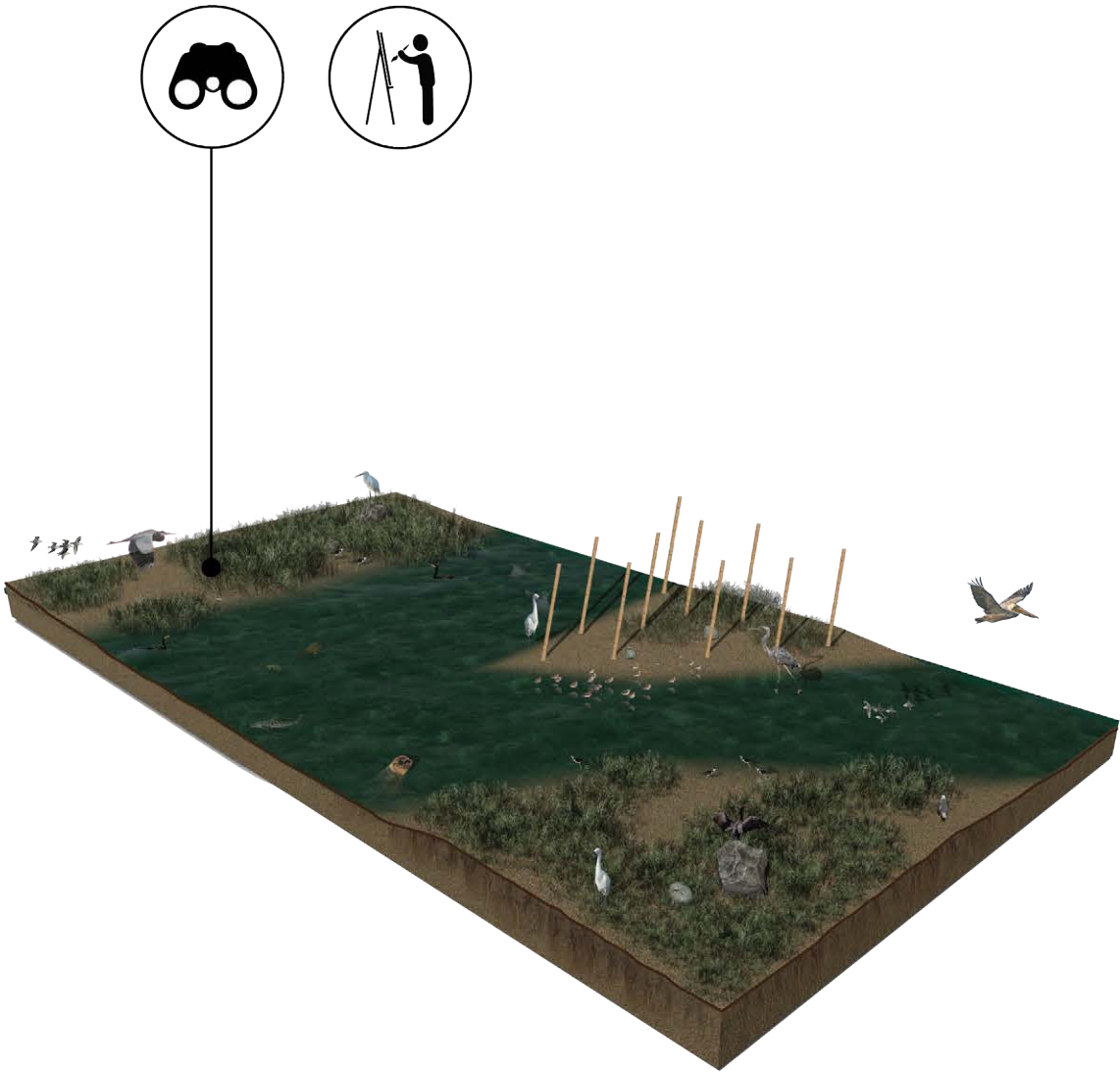


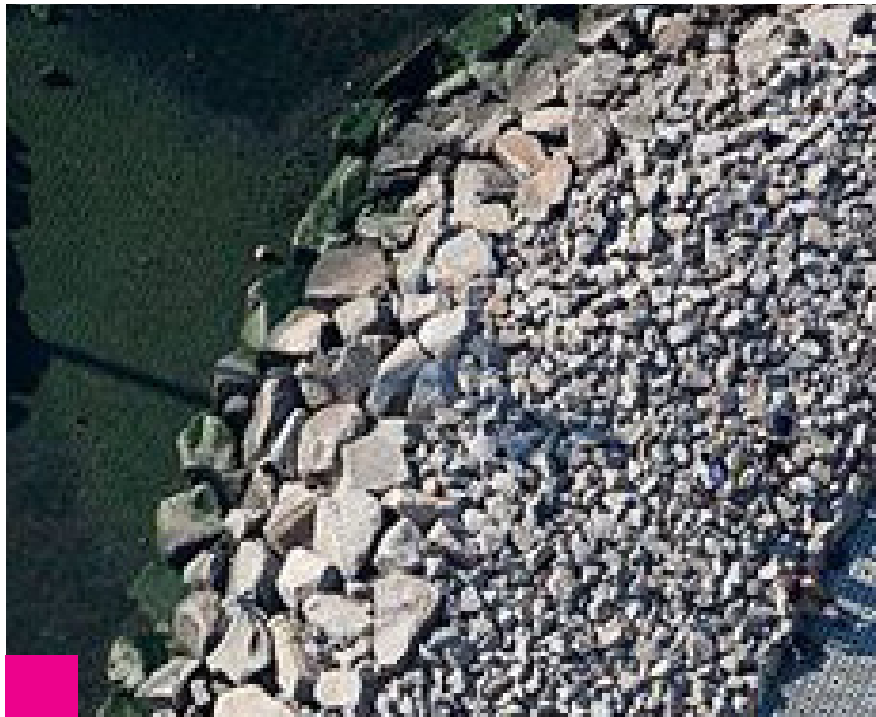
OPEN WATER

KEY



KEY

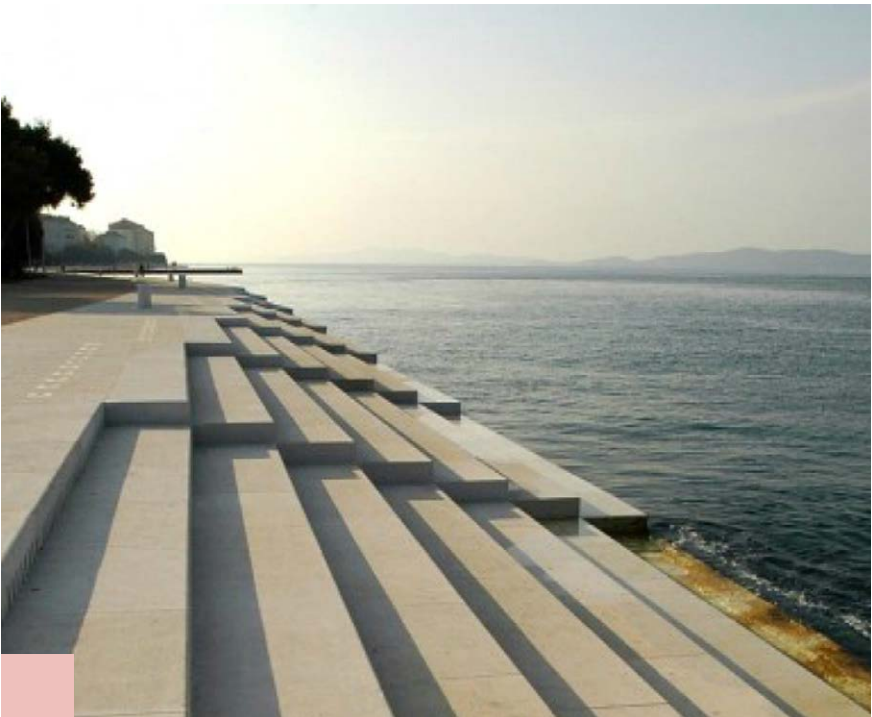




STONE EDGE - SUPPLEMENT EXISTING EDGE WITH ADDITIONAL STONE TO CREATE A GRADIENT OF SIZES + MAKE EDGE MORE LEGIBLE



NATURALIZED EDGE - PROTECTS COAST LINE FROM SEA LEVEL RISE WHILE ENHANCING HABITAT VALUE FOR THE SITE



STEPPED EDGE - OPENS UP SPACE TO SIT AND OBSERVE THE BAY

KEY





- Lupinus chamissonis*
- Achillea millefolium*
- Sanicula bipinnatifida*
- Iris douglasiana*
- Solidago californica*
- Danthonia californica*
- Stipa pulchra*

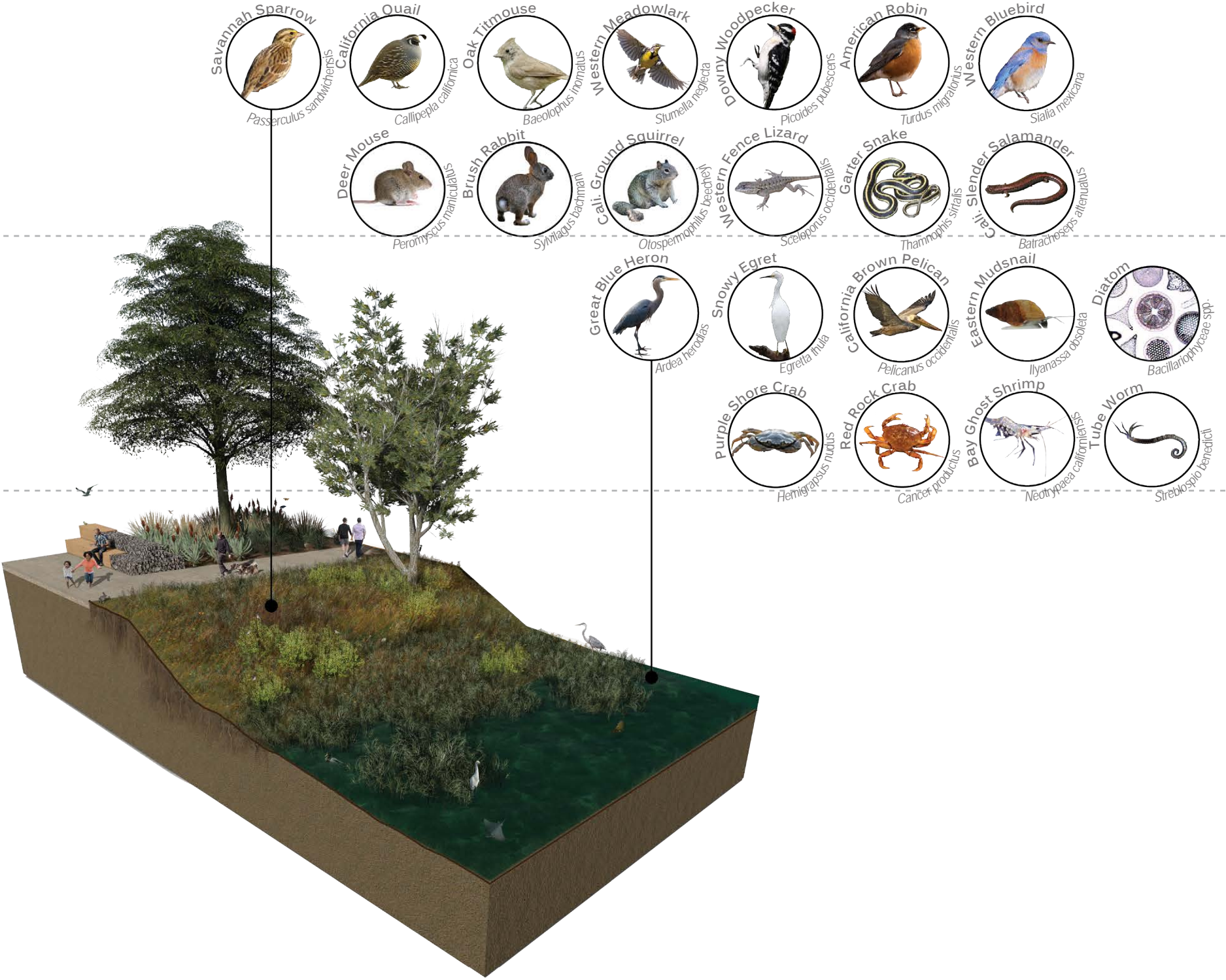
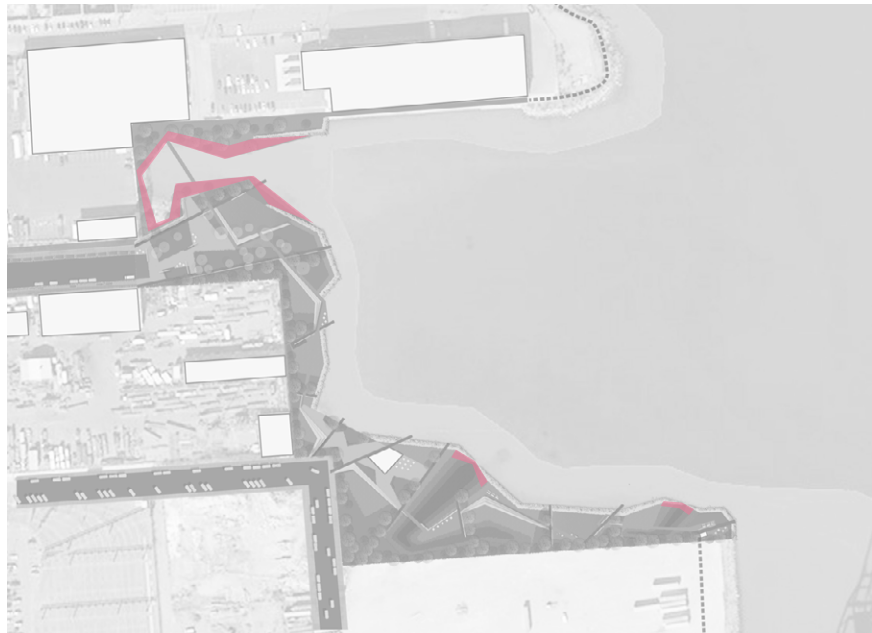
COASTAL SCRUB

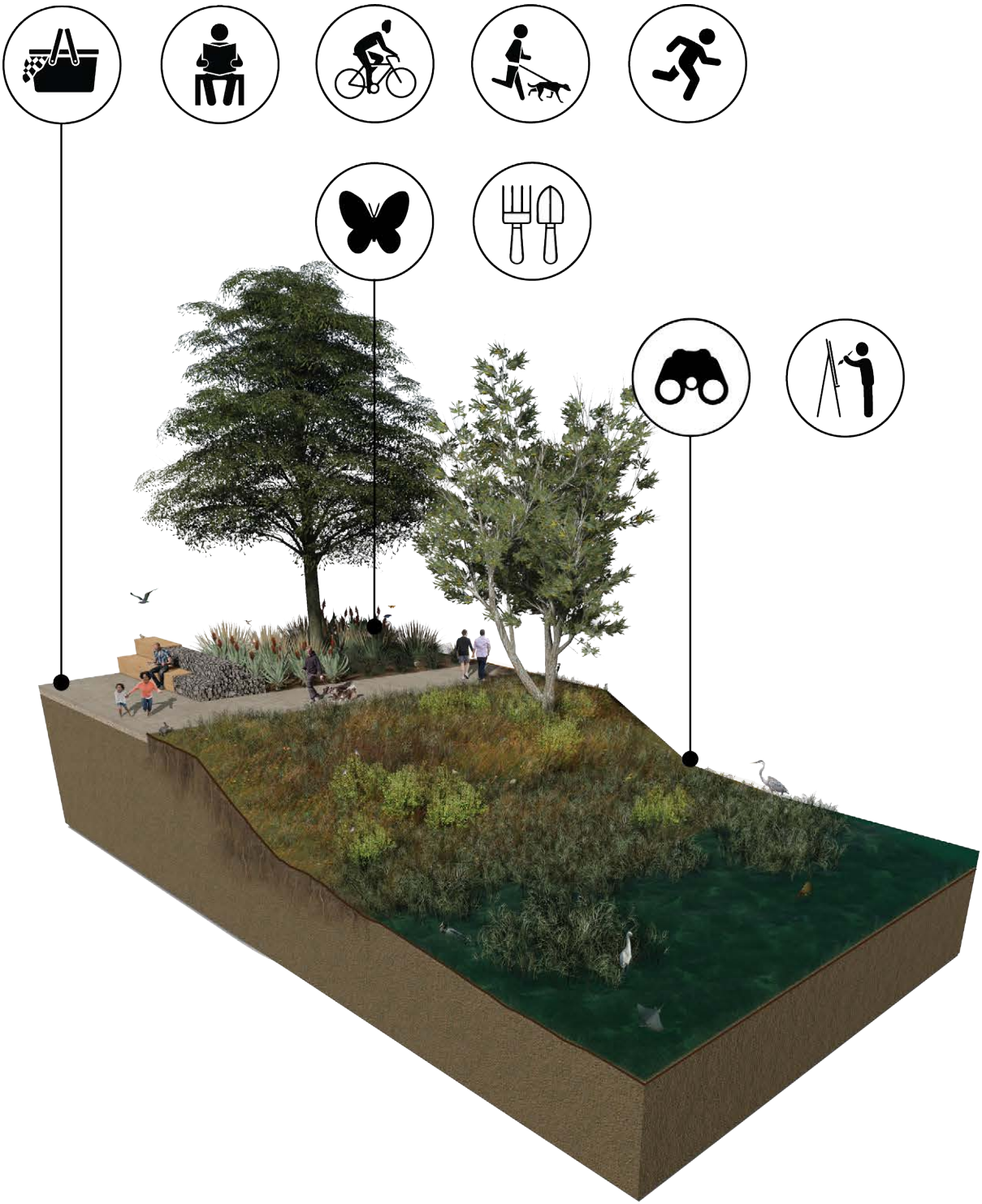
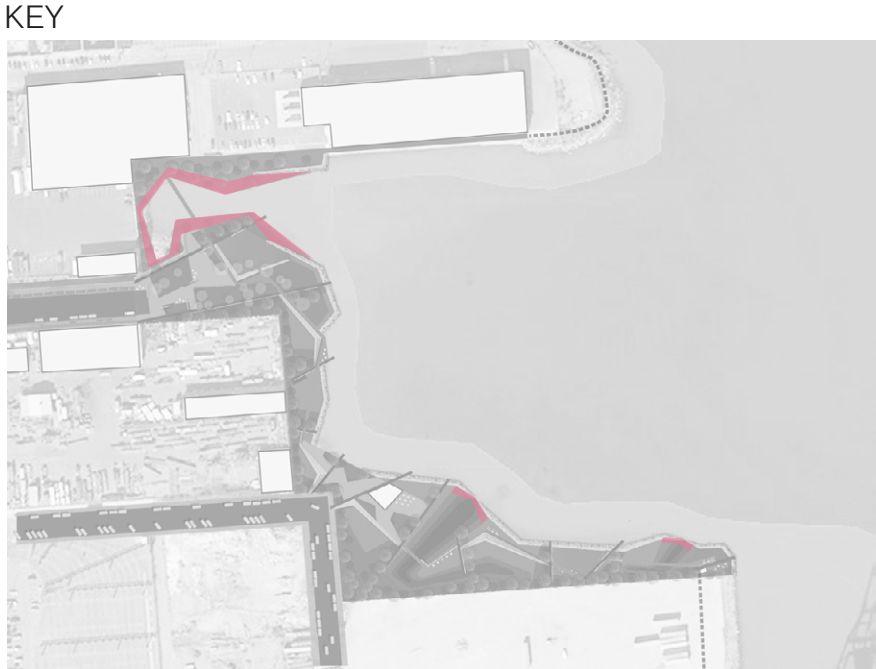


- Limonium sinuatum*
- Suaeda californica*
- Frankenia*
- Salicornia*
- Cuscuta*
- Spartina foliosa*
- Scirpus robustus*

MARSH/MUDFLAT

KEY





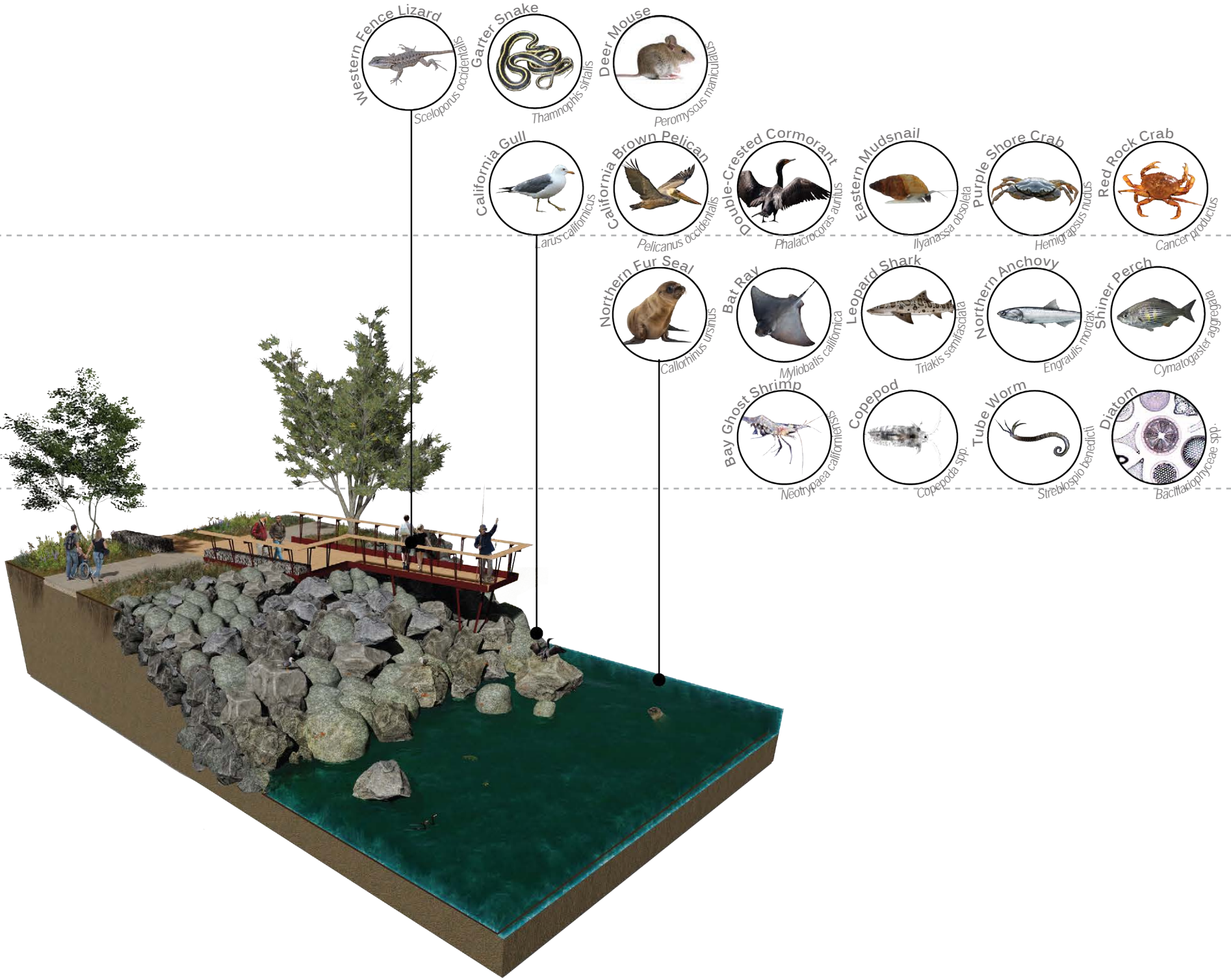


RIP-RAP

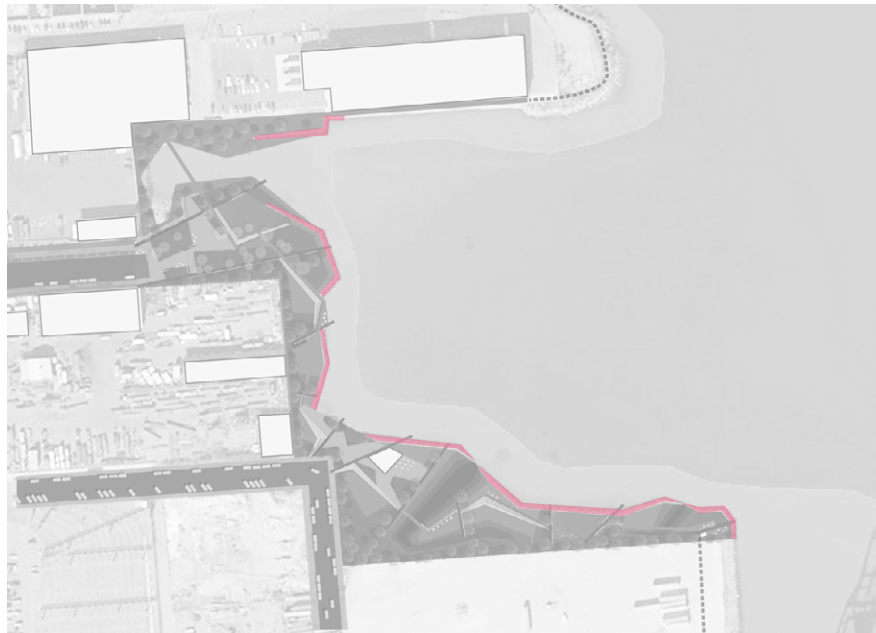


OPEN WATER

KEY



KEY





STEPPED EDGE



MARSH/MUDFLAT

KEY

