

WELCOME!

Japantown Osaka Way/Buchanan Mall

OPEN HOUSE #2

日本町

大阪ウェイ (ブキャナン モール)

アップグレードプロジェクト

JAPANTOWN

OSAKA WAY (BUCHANAN MALL)

UPGRADES PROJECT

AGENDA

- Introduction (3 min.)
- Project Overview (3 min.)
- Ruth Asawa's Legacy (5 min.)
- Outreach & Engagement Summary (7 min.)
- Site Analysis (3 min.)
- Design Concepts (15 min.)
- Next Steps (2 min.)
- Brief Q&A (10-15 min.)



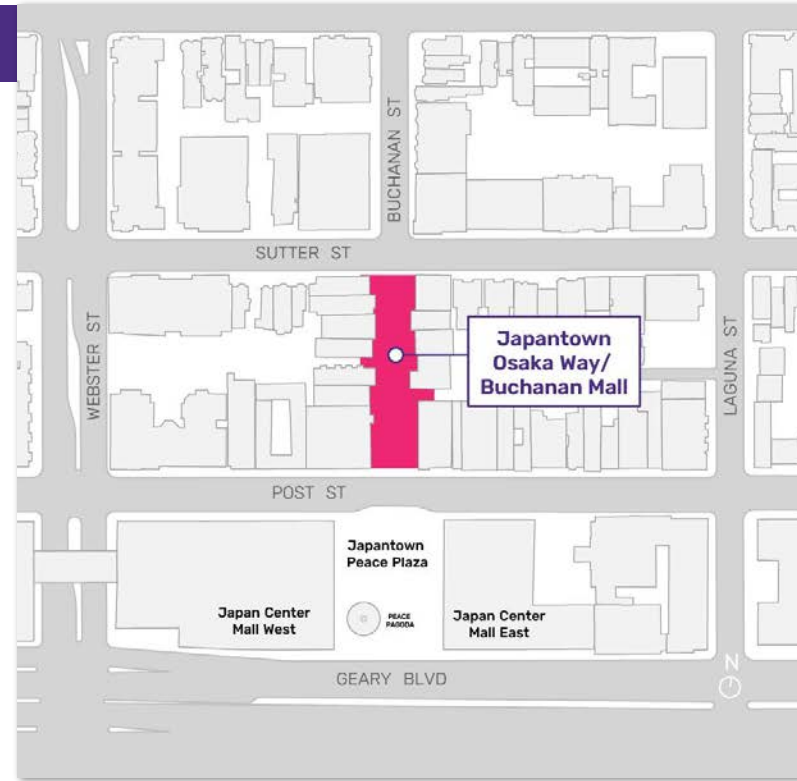
Land Acknowledgement

San Francisco Planning acknowledges that we are on the unceded ancestral homeland of the Ramaytush Ohlone, who are the original inhabitants of the San Francisco Peninsula. As the indigenous stewards of this land and in accordance with their traditions, the Ramaytush Ohlone have never ceded, lost, nor forgotten their responsibilities as the caretakers of this place, as well as for all peoples who reside in their traditional territory. As guests, we recognize that we benefit from living and working on their traditional homeland. We wish to pay our respects by acknowledging the Ancestors, Elders, and Relatives of the Ramaytush Ohlone community and by affirming their sovereign rights as First Peoples.

PROJECT OVERVIEW

Japantown's Osaka Way (Buchanan Mall) is the pedestrian portion of Buchanan Street that runs for one block between Post and Sutter streets.

Along with Peace Plaza, it's the geographic and cultural heart of the neighborhood allowing residents and visitors to experience Japantown's culture in a pedestrian environment.



PROJECT GOALS

1 ENHANCE ACCESSIBILITY



Enhance accessibility of Osaka Way for seniors and people with disabilities and limited mobility.

2 RESTORE THE RUTH ASAWA FOUNTAINS



Rehabilitate the Ruth Asawa fountains that are iconic to Osaka Way.

3 SUPPORT THE BUSINESS COMMUNITY



Support the business community by embellishing the sense of cultural authenticity and enhancing the commercial edges of Osaka Way.

PROJECT TIMELINE



SITE HISTORY / RUTH ASAWA LEGACY

- Site History
- Origami Fountains
- Cobblestone River
- Concrete Benches



SITE HISTORY



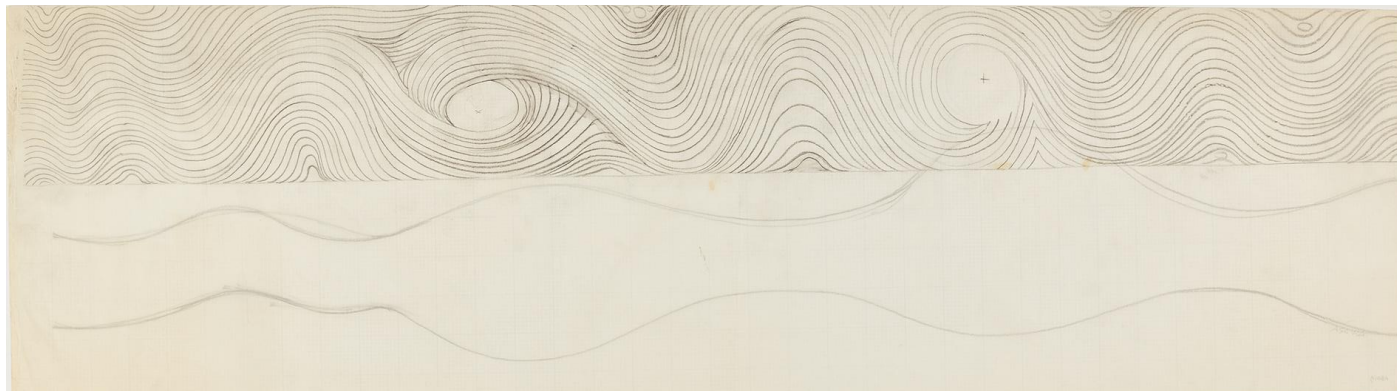
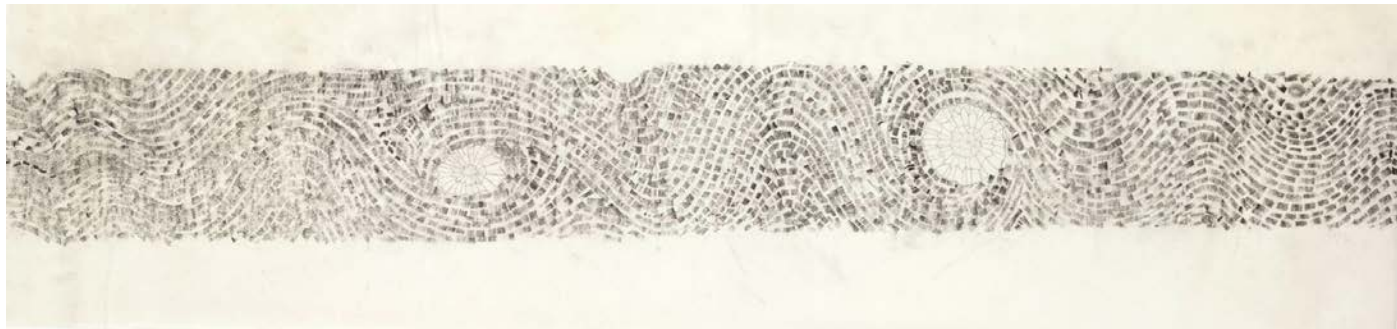
ORIGAMI FOUNTAINS



All Artwork © 2023 Ruth Asawa Lanier, Inc./Artists Rights Society (ARS), New York, Courtesy David Zwirner

Japantown Osaka Way/Buchanan Mall Upgrades Project | OPEN HOUSE #2 | OCTOBER 3, 2023

COBBLESTONE RIVER



All Artwork © 2023 Ruth Asawa Lanier, Inc./Artists Rights Society (ARS), New York, Courtesy David Zwirner



CAST CONCRETE BENCHES



All Artwork © 2023 Ruth Asawa Lanier, Inc./Artists Rights Society (ARS), New York, Courtesy David Zwirner

OUTREACH AND ENGAGEMENT SUMMARY

- **Timeline**
- **Main Takeaways**
 - Ruth Asawa Elements
 - Lighting
 - Planting
 - Other Features / Programming
- **Focus Groups**
 - Youth
 - Seniors
 - Merchants



OUTREACH & ENGAGEMENT TIMELINE



FEEDBACK - RUTH ASAWA ELEMENTS

MAIN TAKEAWAYS

Create accessible walking surface at river while maintaining the essence of Ruth's design

Improved visibility of Ruth Asawa signage

Working fountains will help activate plaza

Consider making fountain walls more comfortable to sit on



Open House #1

"Security"

"Would like to see [fountains] working again"

"great drainage [at fountains]"

"Smooth walkway"

"Is there possibility of moving Ruth Asawa Fountains onto Peace Plaza?"

"Smooth the surface of the cobble stone for ADA"

"Cover stones with glass/resin"

"Is there a way to mitigate unevenness of cobblestone yet still retain the look/feel of rugged texture?"

"Not sure if there is signage mentioning that the fountains were made by Ruth but maybe this can be made clear or more attention can be drawn to that fact?"

"Can the Osaka Way Mall be a kind of al fresco gallery that tells story of Asawa's community-based artwork? QR codes about her life + art?"

"I like the uniqueness and design of the cobblestones. However, I know people worry about the uneven surface. Could a smooth path cut through some of the cobbles to offer a passage way/path from one side of the mall to the other? Some physical therapists would say uneven surfaces help to improve your balance!"



FEEDBACK - LIGHTING

MAIN TAKEAWAYS

Add more street and pedestrian scale lighting to enhance character of Osaka Way and surrounding neighborhood

Mixed opinions on Japanese language lantern posts



Open House #1

"Please keep lights!!!"

"I like the paper lamps. I'd like more of them."

"The hanging lights should be addressed — would it be possible to incorporate more traditional-looking lighting into the space?"



Feedback from Cherry Blossom Festivals (2022 & 2023)

"Keep string lights year round"

"Alternating bistro lights more fluid to the times and daylight"

"More lighting"

"Lighting to support the new outdoor dining spaces"

"Festive lanterns"



FEEDBACK - PLANTING

MAIN TAKEAWAYS

Desire for more trees/larger canopies

Improved appearance and locations of planters

Culturally relevant planting appropriate for local environment

Regular maintenance of planting



Feedback from Cherry Blossom Festivals

(2022 & 2023)

"Some areas of shade"

"Maple trees"

"Plant more cherry trees"

"Keep the [cherry] trees, like the blossoms"

"Circular garden [at fountains]"

"More cherry blossom trees!"

"More trees! Gardens! Modular/Moveable gardens :)"

"The round concrete planters are unsightly and irregularly spaced. Perhaps more traditional looking planters?"

- Open House #1 Participant

"Add hanging planters to areas like the torii gate."

- Youth Engagement



FEEDBACK - OTHER FEATURES / PROGRAMMING

MAIN TAKEAWAYS

Improved wayfinding, signage, seating, and outdoor dining to support day-to-day functions and festival days

Consider tables if space allows

Complementary art opportunities



Feedback from Cherry Blossom Festivals (2022 & 2023)

“Add a sign indicating this is Japantown”

“I really love the idea of preserving the artwork while making the space much more wheelchair accessible”

“Cafes/outdoor patios to dine”

“More micro-community activations”

“Paper crane display”

“A performance stage for presenting Japanese culture”

“Cultural shops, food and art”

“Sitting areas”

“Please remodel this plaza. Need access for wheelchair and more table for people eat out :)”

“Wishing wall (write wishes and hang them)”

“I like the torii gate. It’s a welcome and reminder of why/how this area came to be. To redo the gate would require balancing authenticity and whitewashing.”

“More obvious signage about Osaka Way’s history and Ruth Asawa work”

- Open House #1 Participant

“More seating”
“table/board games”

- Open House #1 Participant



FOCUS GROUPS - YOUTH, SENIORS, MERCHANTS



- Japanese Community Youth Council Workshop
- JCYC Nikkei Intern Tour & Roundtable



- 7+ Senior Living Facilities surveyed
- More than 120 respondents



- In-person Merchant focus group at Fermentation Labs
- Virtual focus group

MOOD/VISION BOARD

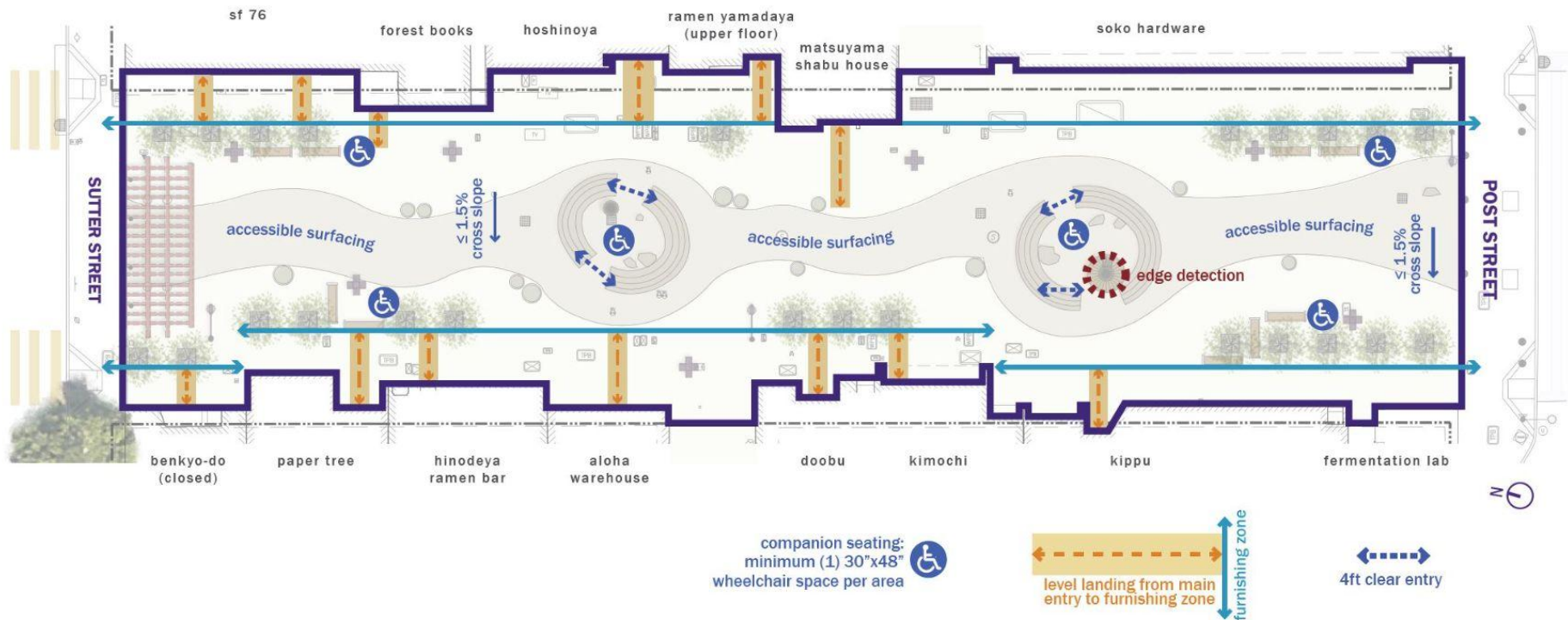


SITE ANALYSIS

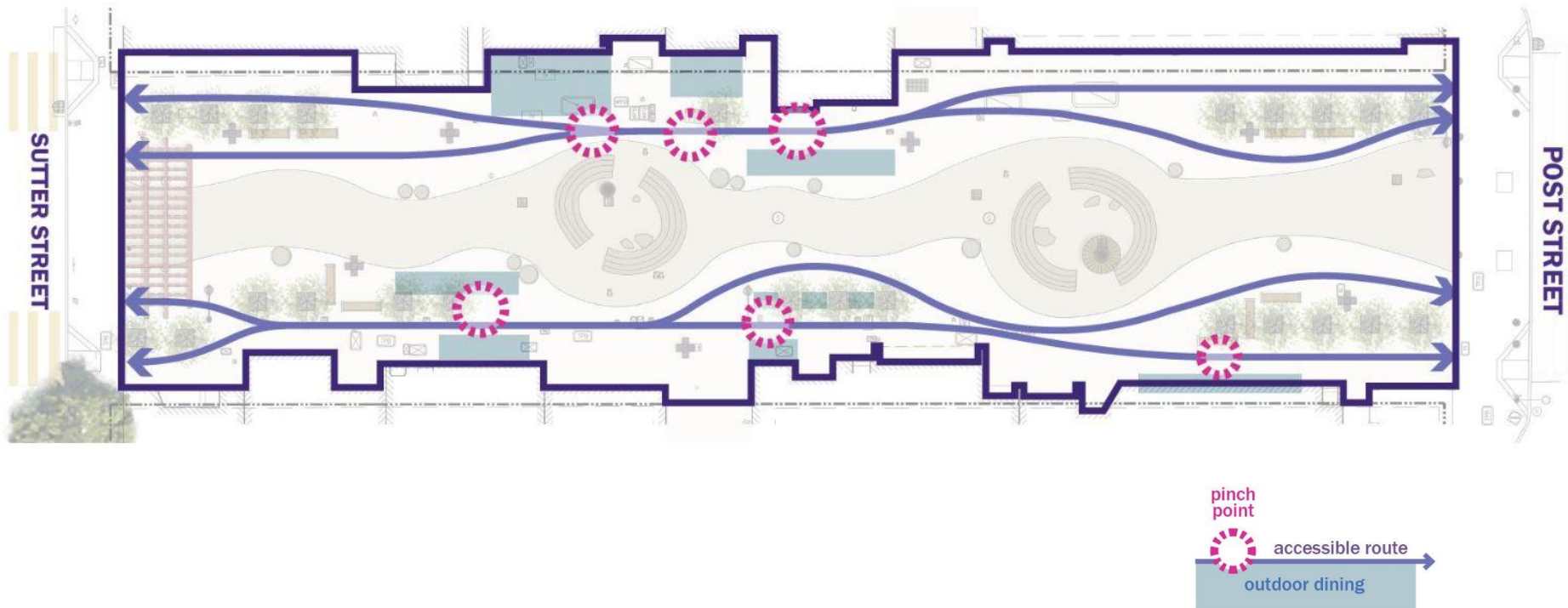
- **Accessibility Improvements**
- **Circulation and Pinch Points**
- **Sun and Views**



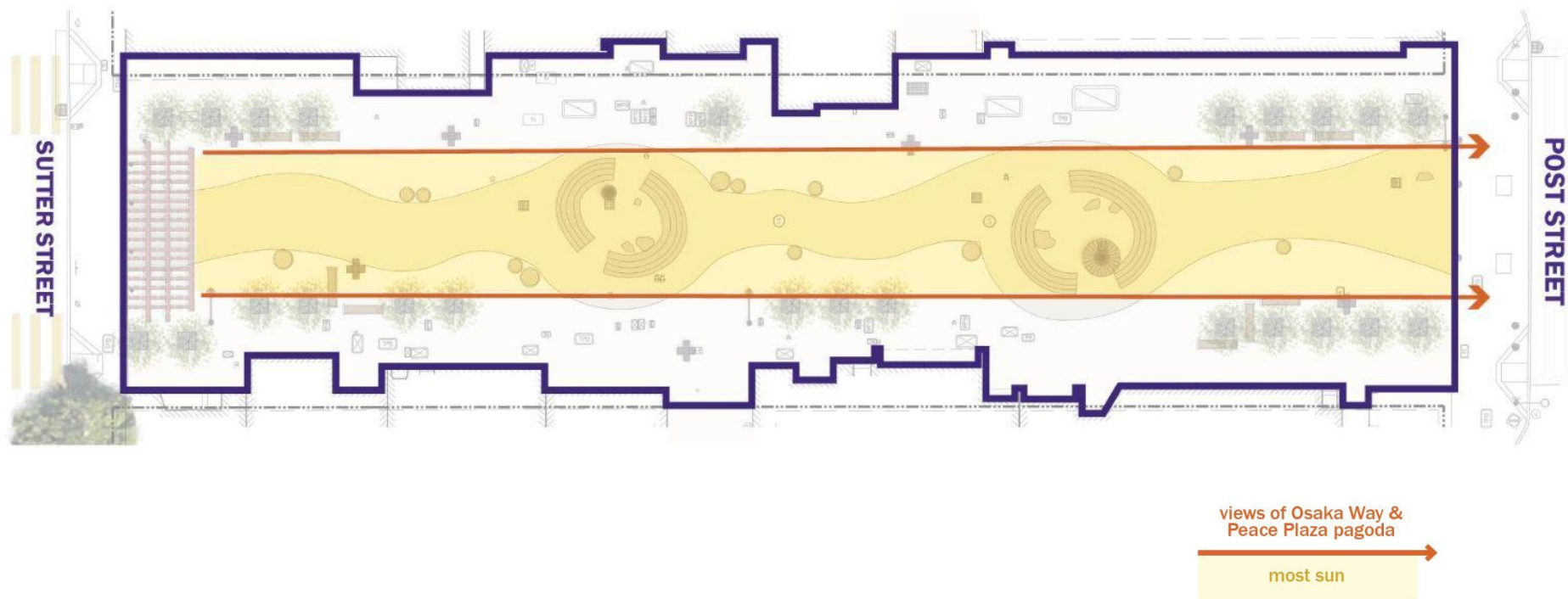
REQUIRED ACCESSIBILITY IMPROVEMENTS



OUTDOOR DINING AND CIRCULATION PINCH POINTS



SUN EXPOSURE AND VIEWS



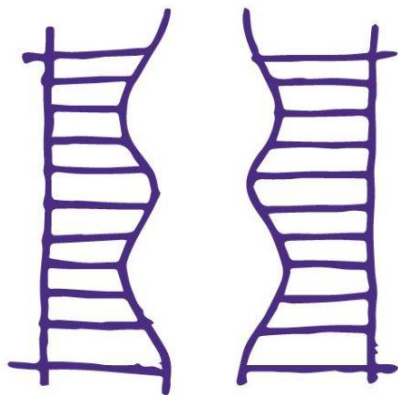
DESIGN CONCEPTS

- **Design Concepts Overview**
- **Existing Site**
- **Conceptual Design**
 - **Option 1 - Kanso**
 - **Option 2 - Datsuzoku**
- **Tree Species**
- **Paving Upgrades**
- **Lighting Upgrades**
- **Summary Comparison**



DESIGN CONCEPTS OVERVIEW

Option 1:

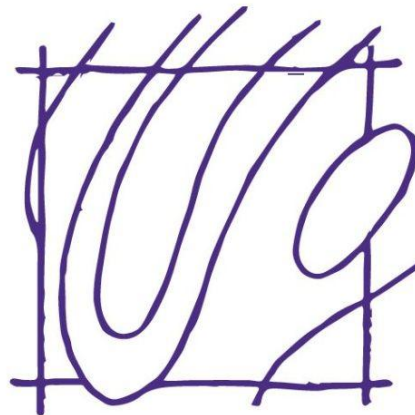


Kanso (簡素):
simplicity

A preservation-minded approach that refreshes the existing geometries of the space using mostly city-standard materials and furnishings.

At the heart of both concepts is celebration of the Ruth Asawa fountains

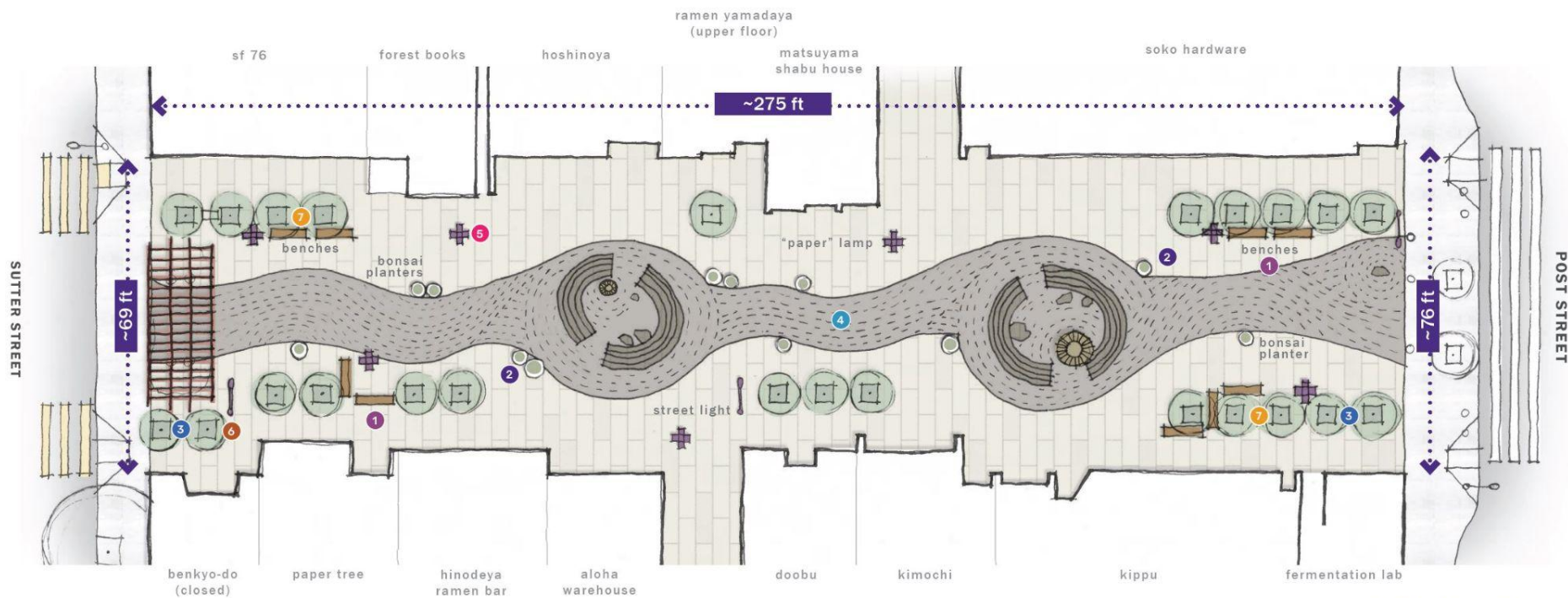
Option 2:



Datsuzoku (脱俗):
unbounded by convention

An alternative vision for the space inspired by Japanese gardens featuring new materials and furnishings.

EXISTING



1 benches



2 bonsai planters



3 cobble tree well



4 cobble paving



5 "paper" lamp



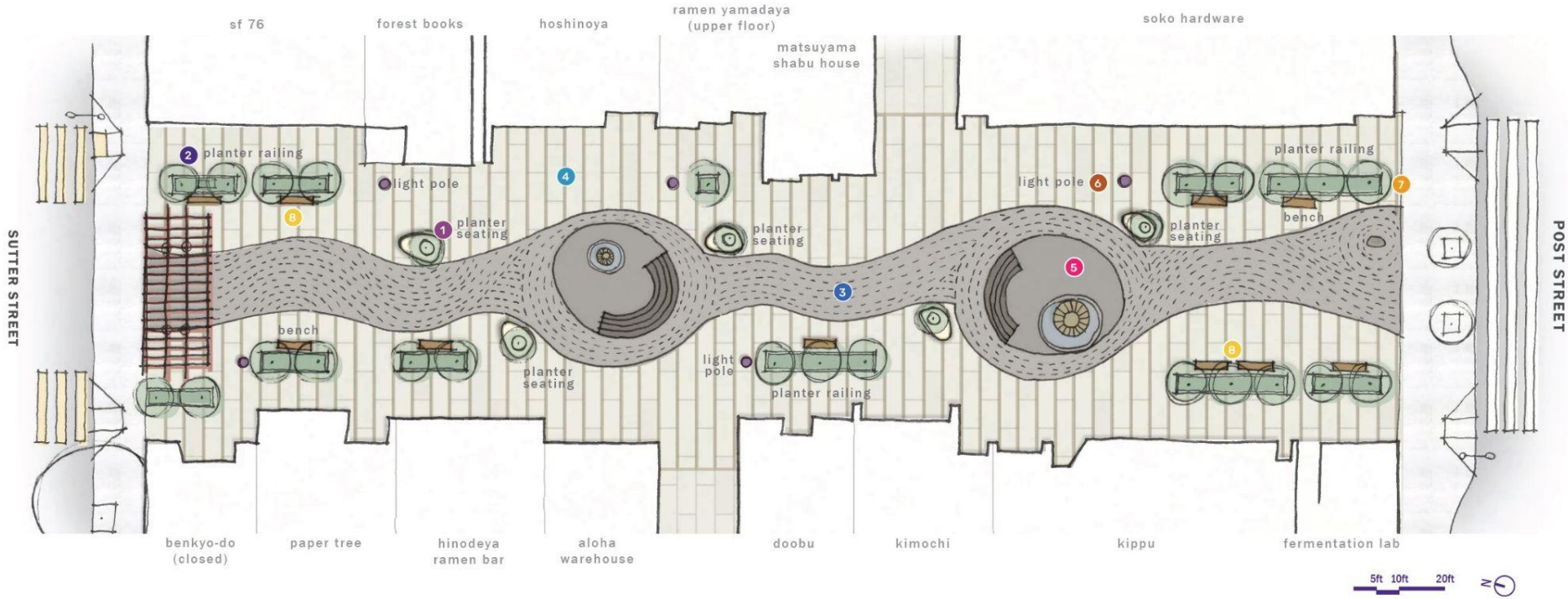
6 street light



7 cherry trees



OPTION 1 - KANSO | PLAN



1 planter seating



2 planter railing



3 planed cobble



4 unit paver bands



5 fountain area paving



6 light pole - 16 ft



7 existing cherry trees



8 refurbished ruth asawa benches

OPTION 1 - KANSO | PERSPECTIVE



1 planter seating



2 planter railing



3 planed cobble



4 unit paver bands



5 fountain area paving



6 light pole - 16 ft

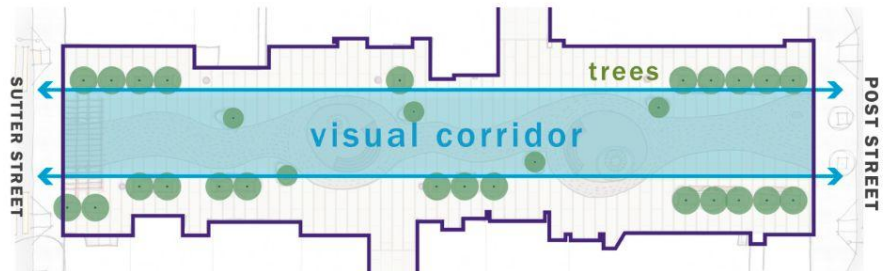
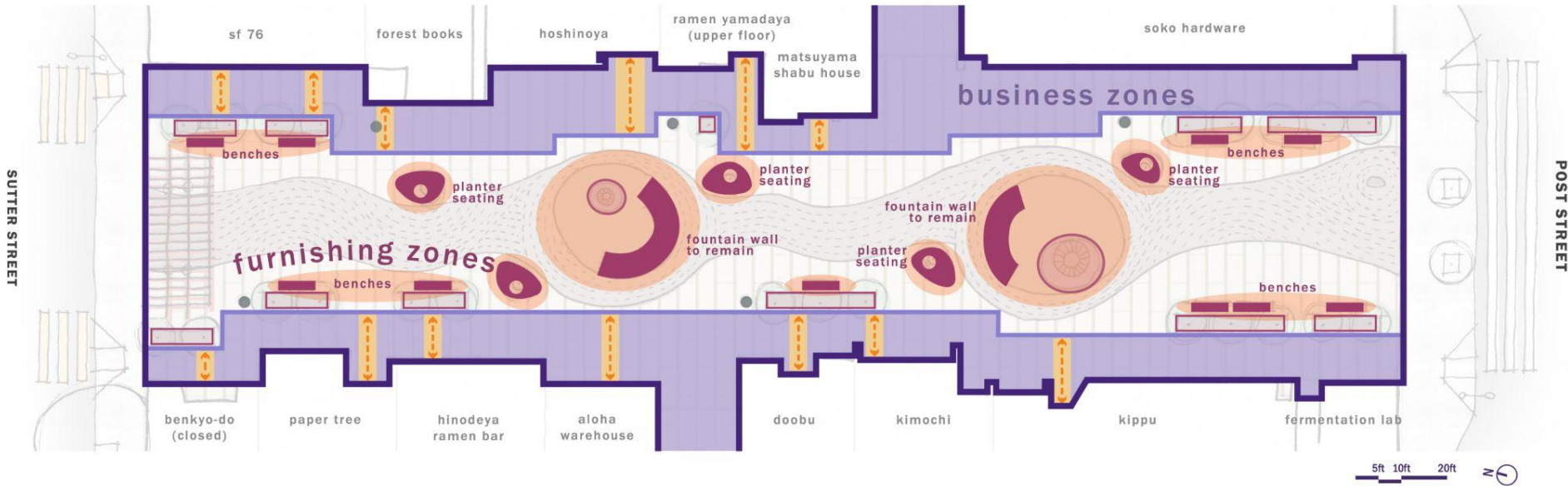


7 existing cherry trees

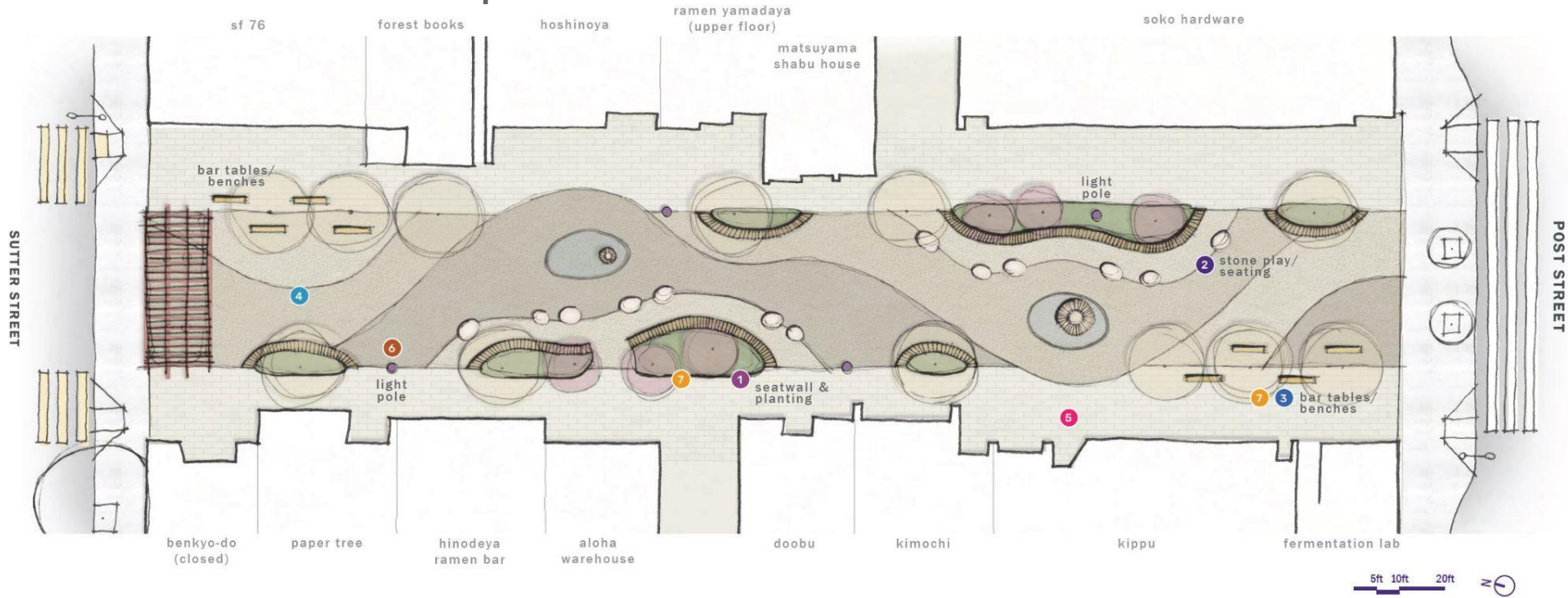


8 refurbished ruth asawa benches

OPTION 1 - KANSO | USE DIAGRAMS



OPTION 2 - DATSUZOKU | PLAN



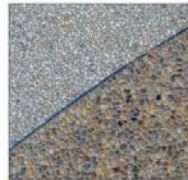
1 seatwall & planting - ruth asawa bench ends



2 stone play/seating



3 bar table



4 aggregate paving



5 unit pavers



6 light pole - 16 ft

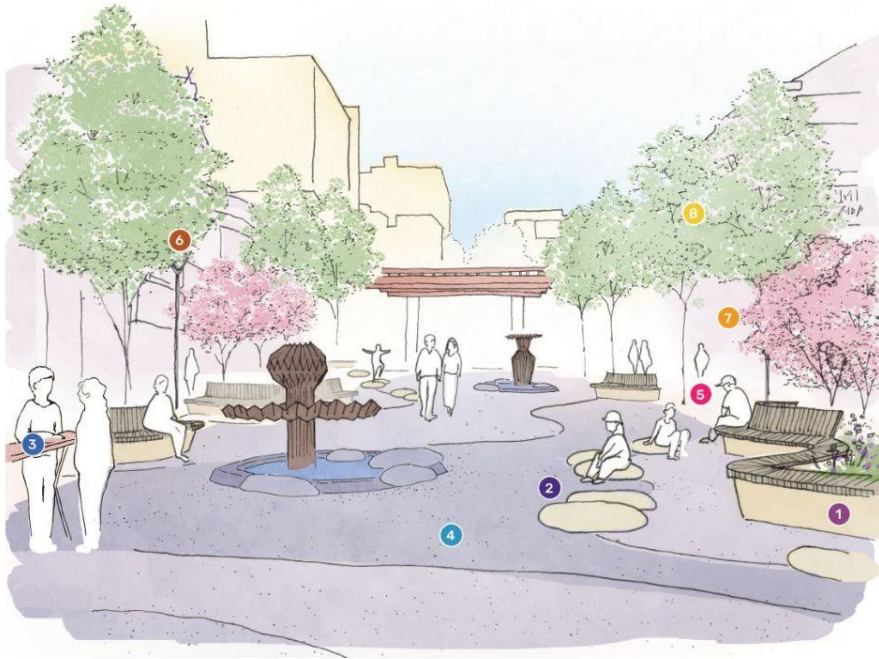


7 existing cherry trees



8 ginkgo trees

OPTION 2 - DATSUZOKU | PERSPECTIVE



1 seatwall & planting - ruth asawa bench ends



2 stone play/seating



3 bar table



4 aggregate paving



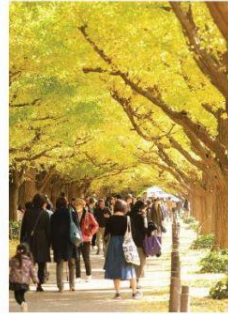
5 unit pavers



6 light pole - 16 ft



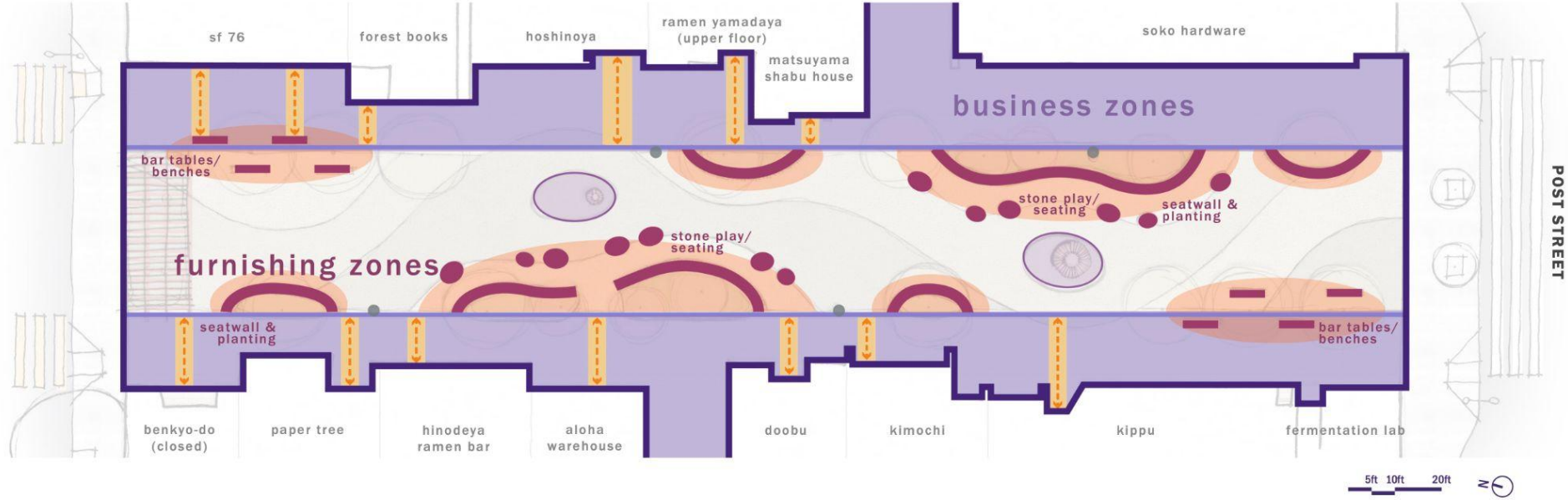
7 existing cherry trees



8 ginkgo trees

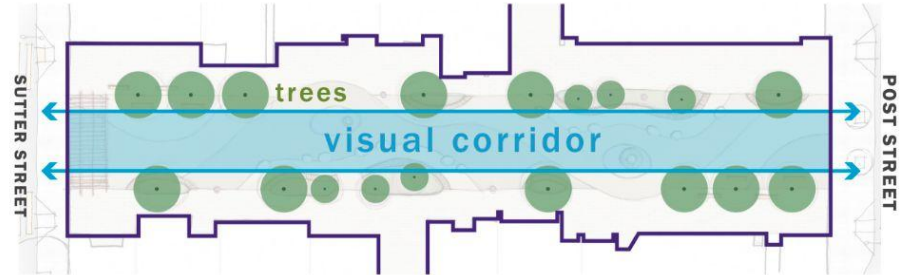
OPTION 2 - DATSUZOKU | USE DIAGRAMS

SUTTER STREET



POST STREET

SUTTER STREET



TREE SPECIES

SEASONAL COLOR

OPTION 1: KANSO

Cherry blossom (existing)



OPTION 2: DATSUZOKU

Cherry blossom (existing)

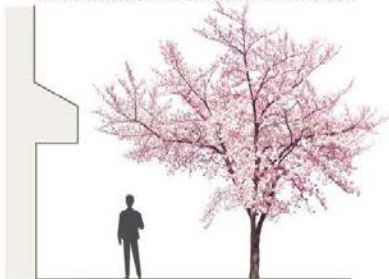


Ginkgo (male)

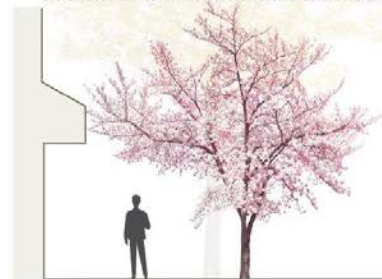


SIZE COMPARISON

15ft to 20ft



15ft to 20ft



25ft to 50ft



SPECIAL PAVING

1. Patterned concrete

2. Aggregate paving

3. Contrasting curves & textures



4. Stone & Metal Inlays

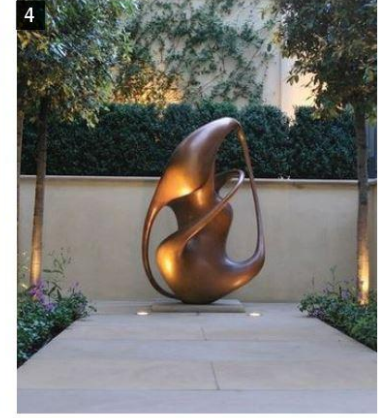
5. Unit pavers

6. Metal inlay



SPECIAL LIGHTING

1. Catenary lighting
2. Overhead lanterns
3. Peace Plaza light pole
4. Fountain lighting

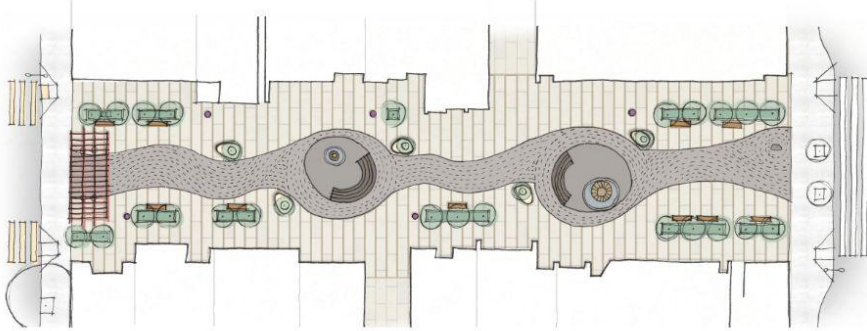
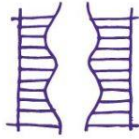


5. Torii gate lighting
6. Bollard lighting
7. Pole banners

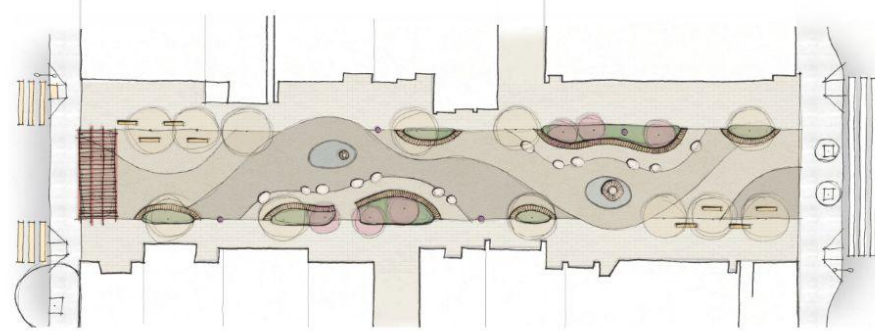


OPTION COMPARISON

OPTION 1: KANSO



OPTION 2: DATSUZOKU



1. Repairs Ruth Asawa fountains

2. Addresses code compliance issues

3. Fewer changes

4. Maintains overall existing site layout

5. Uses mostly standard materials (paving, furnishings, etc.)

6. Less opportunity for unique design elements

7. Keeps existing cherry trees with new under-planting

8. Restores existing cobble in a code-compliant condition

• Repairs Ruth Asawa fountains

• Addresses code compliance issues

• More changes

• Introduces an alternative site design

• Uses more custom and non City-standard materials

• Greater opportunity for unique design elements

• Adds more planting types, including canopy trees

• Replaces cobble with new paving

STAY INVOLVED!

SPRING 2023

PUBLIC WORKSHOP #1

FOCUS: Project overview, Goals and objectives, Site history, Existing conditions, Community feedback, Projected timeline

SUMMER 2023

FOCUSED CONVERSATIONS & SURVEYS

Focused outreach with merchants, children and youth, seniors and people with disabilities

TODAY!

PUBLIC WORKSHOP #2

FOCUS: Initial conceptual design alternatives, gather feedback on preferred options

FALL 2023

PUBLIC WORKSHOP #3

FOCUS: Present a revised conceptual design and address remaining concerns

PROJECT TIMELINE *(subject to changes)*

- **Spring 2022 - Winter 2023**
Conditions & Needs Assessment, Initial Project Outreach
- **Spring 2023 - Fall 2023**
Public Workshop Series and Conceptual Design Development
- **Fall 2023 - Spring 2024**
Design Refinement, Environmental Review
- **Summer 2024**
Detailed Design
- **Spring 2025**
Construction begins

Q&A

Any Questions or Comments?

- If you're joining via Zoom, please add your comments in the chat for us to read out loud
- If you're joining in person, please step forward and line up behind the microphone



THANK YOU!

SFPlanning.org/JapantownBuchananMall

María De Alva, *Outreach and Engagement*
San Francisco Planning
maria.dealva@sfgov.org

Trent Tiger, *Project Manager*
San Francisco Public Works
trent.tiger@sfdpw.org