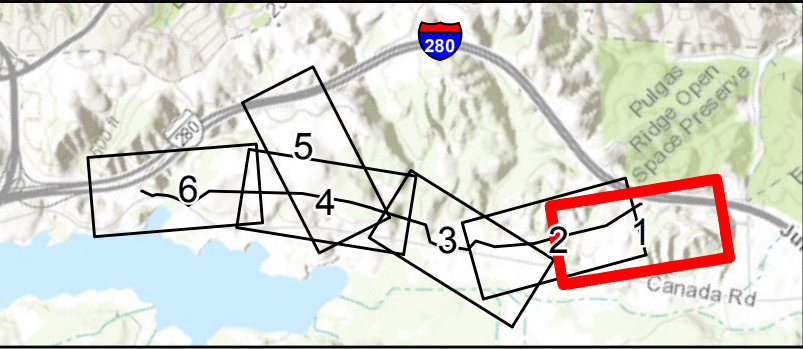
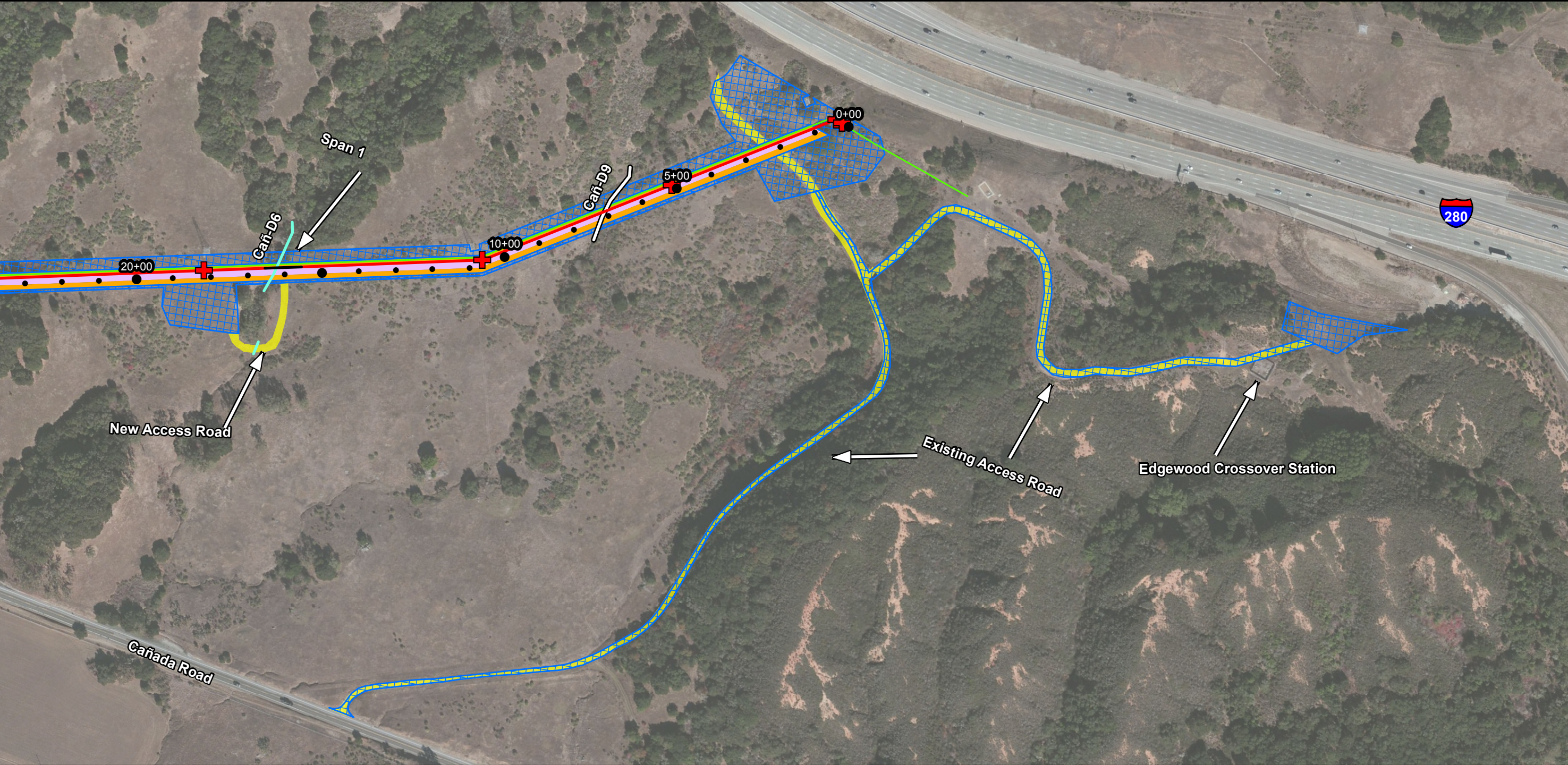


Appendix A

Project Overview Maps



Legend

- | | |
|---------------------------------------|-----------------------------|
| • Stationing | Proposed Temporary Easement |
| Electrolysis Test Station | HDD Equipment Location |
| Aerially Spanned Pipeline Replacement | HDD Work Area |
| HDD Pipeline Replacement | Existing Permanent Easement |
| Line 109 Pipeline Replacement | Proposed Permanent Easement |
| Existing Pipeline | Access Roads |

Waters

- | |
|---|
| Ephemeral Stream |
| Drainage to be crossed by Trenching |
| Drainage to be crossed by HDD |
| Aerially Spanned Crossing |
| Non-jurisdictional Cement-lined V-ditch |

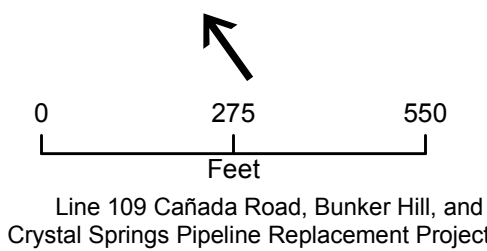
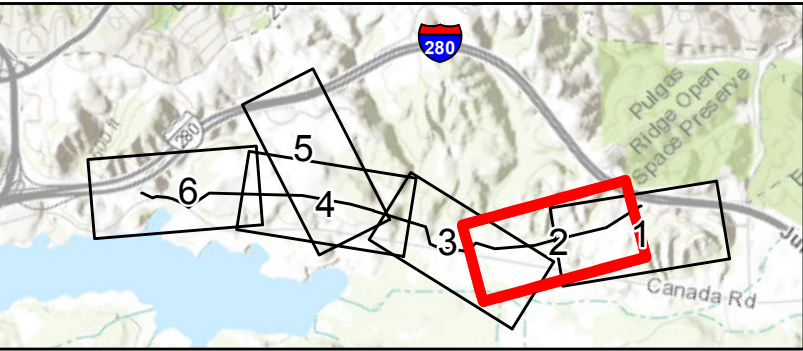
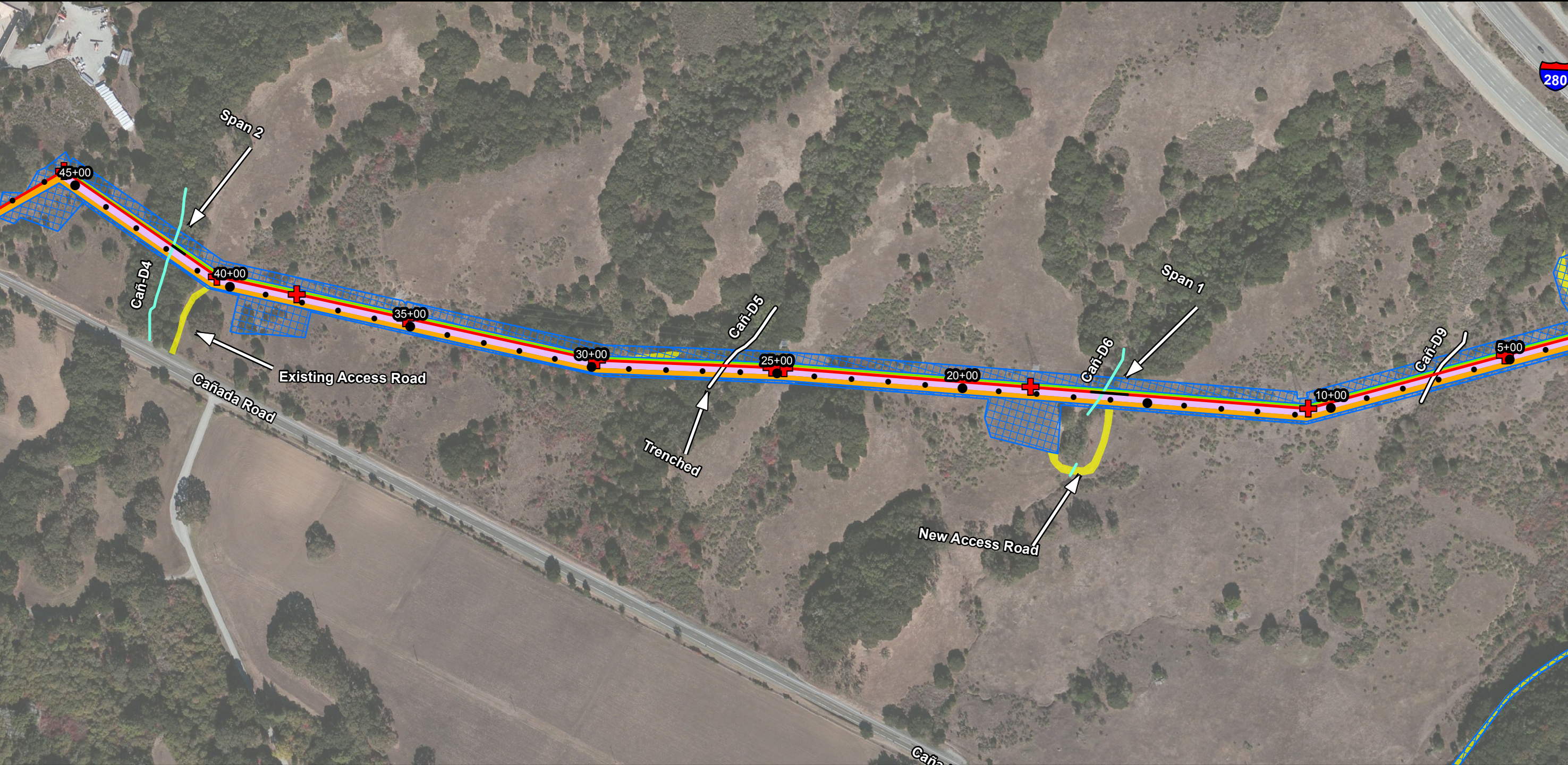


Figure 1
Project Overview Map
Cañada Road Segment



Legend

- | | |
|---------------------------------------|-----------------------------|
| • Stationing | Proposed Temporary Easement |
| Electrolysis Test Station | HDD Equipment Location |
| Aerially Spanned Pipeline Replacement | HDD Work Area |
| HDD Pipeline Replacement | Existing Permanent Easement |
| Line 109 Pipeline Replacement | Proposed Permanent Easement |
| Existing Pipeline | Access Roads |

Waters

- | |
|---|
| Ephemeral Stream |
| Drainage to be crossed by Trenching |
| Drainage to be crossed by HDD |
| Aerially Spanned Crossing |
| Non-jurisdictional Cement-lined V-ditch |

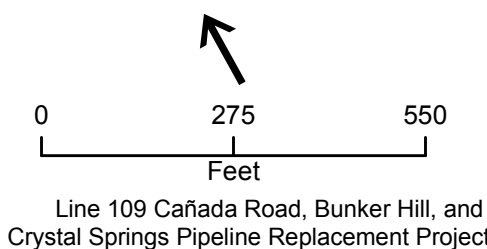
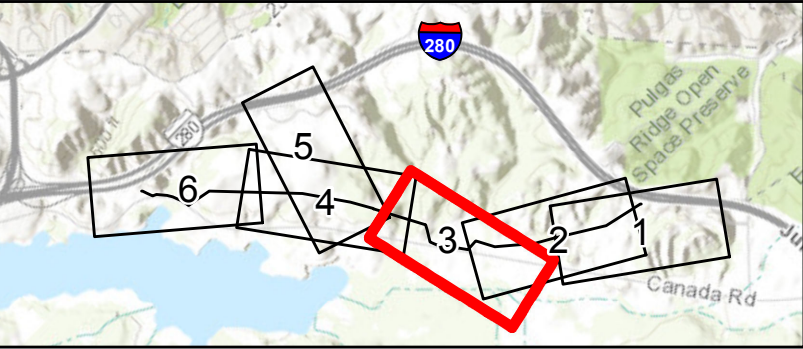


Figure 1
Project Overview Map
Cañada Road Segment

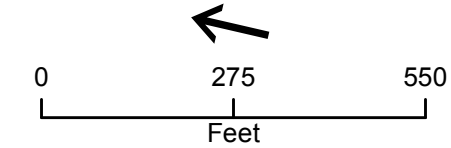


Legend

- Stationing
- ✚ Electrolysis Test Station
- Aerially Spanned Pipeline Replacement
- HDD Pipeline Replacement
- Line 109 Pipeline Replacement
- Existing Pipeline
- ▨ Proposed Temporary Easement
- ▨ HDD Equipment Location
- ▨ HDD Work Area
- ▨ Existing Permanent Easement
- ▨ Proposed Permanent Easement
- ▨ Access Roads

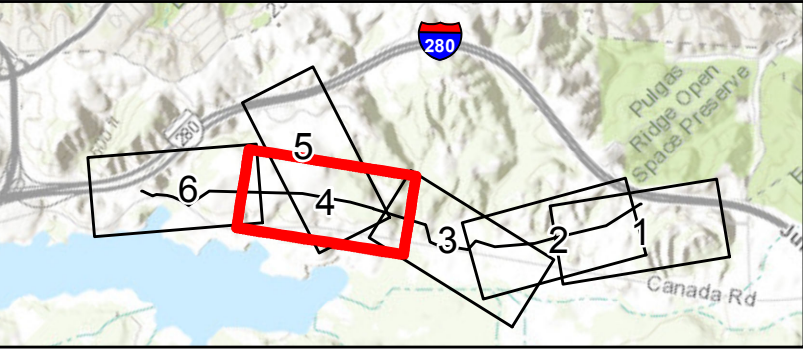
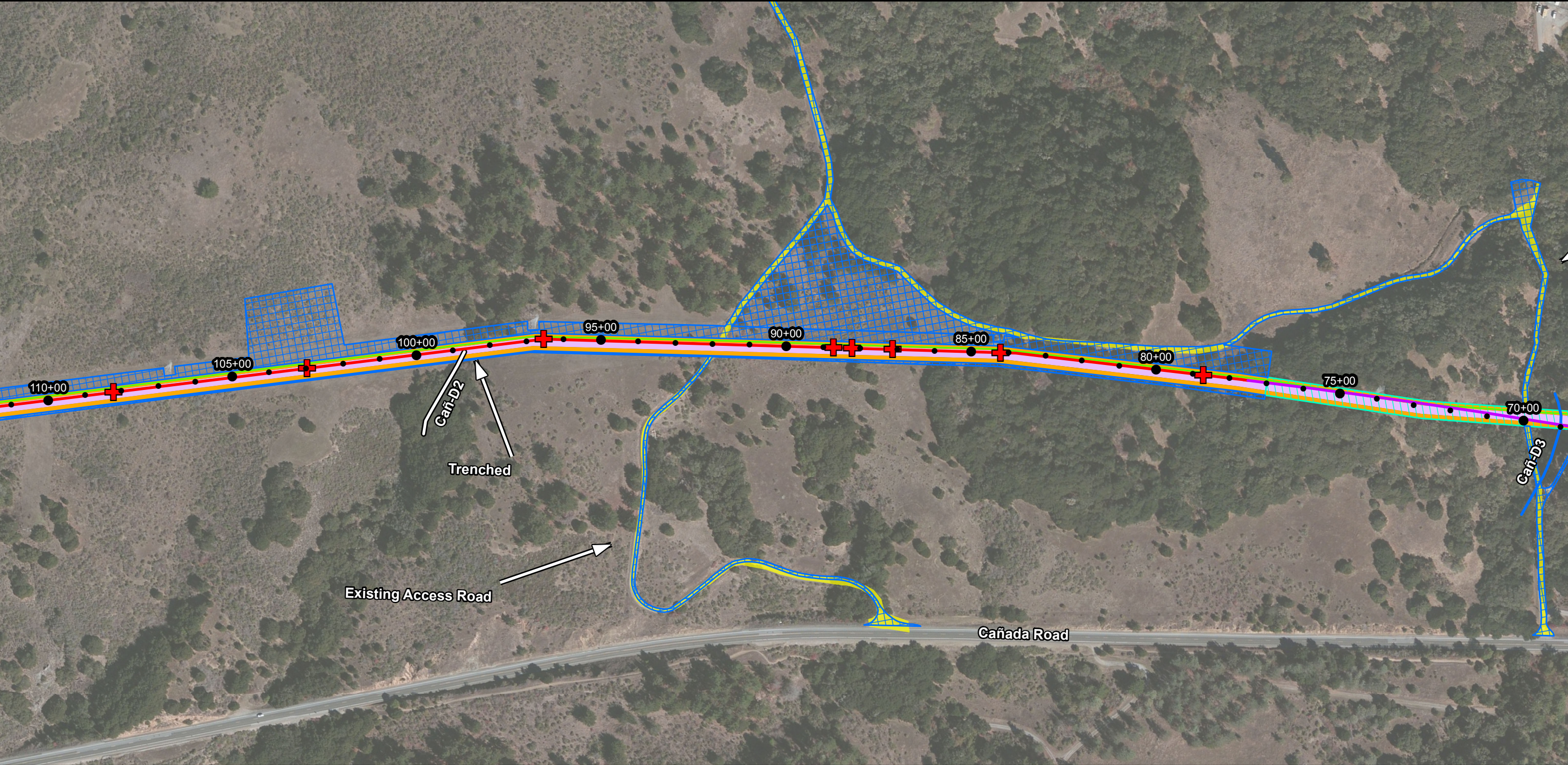
Waters

- Ephemeral Stream
- Drainage to be crossed by Trenching
- Drainage to be crossed by HDD
- Aerially Spanned Crossing
- Non-jurisdictional Cement-lined V-ditch



Line 109 Cañada Road, Bunker Hill, and
Crystal Springs Pipeline Replacement Project

Figure 1
Project Overview Map
Cañada Road Segment

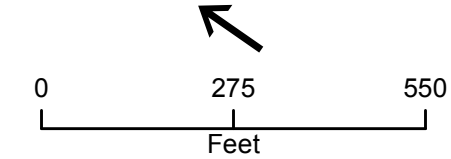


Legend

- | | |
|---|-----------------------------|
| • Stationing | Proposed Temporary Easement |
| ✚ Electrolysis Test Station | HDD Equipment Location |
| — Aerially Spanned Pipeline Replacement | HDD Work Area |
| — HDD Pipeline Replacement | Existing Permanent Easement |
| — Line 109 Pipeline Replacement | Proposed Permanent Easement |
| — Existing Pipeline | Access Roads |

Waters

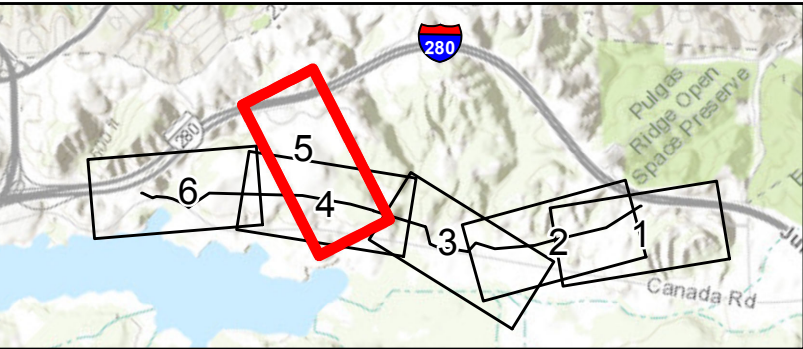
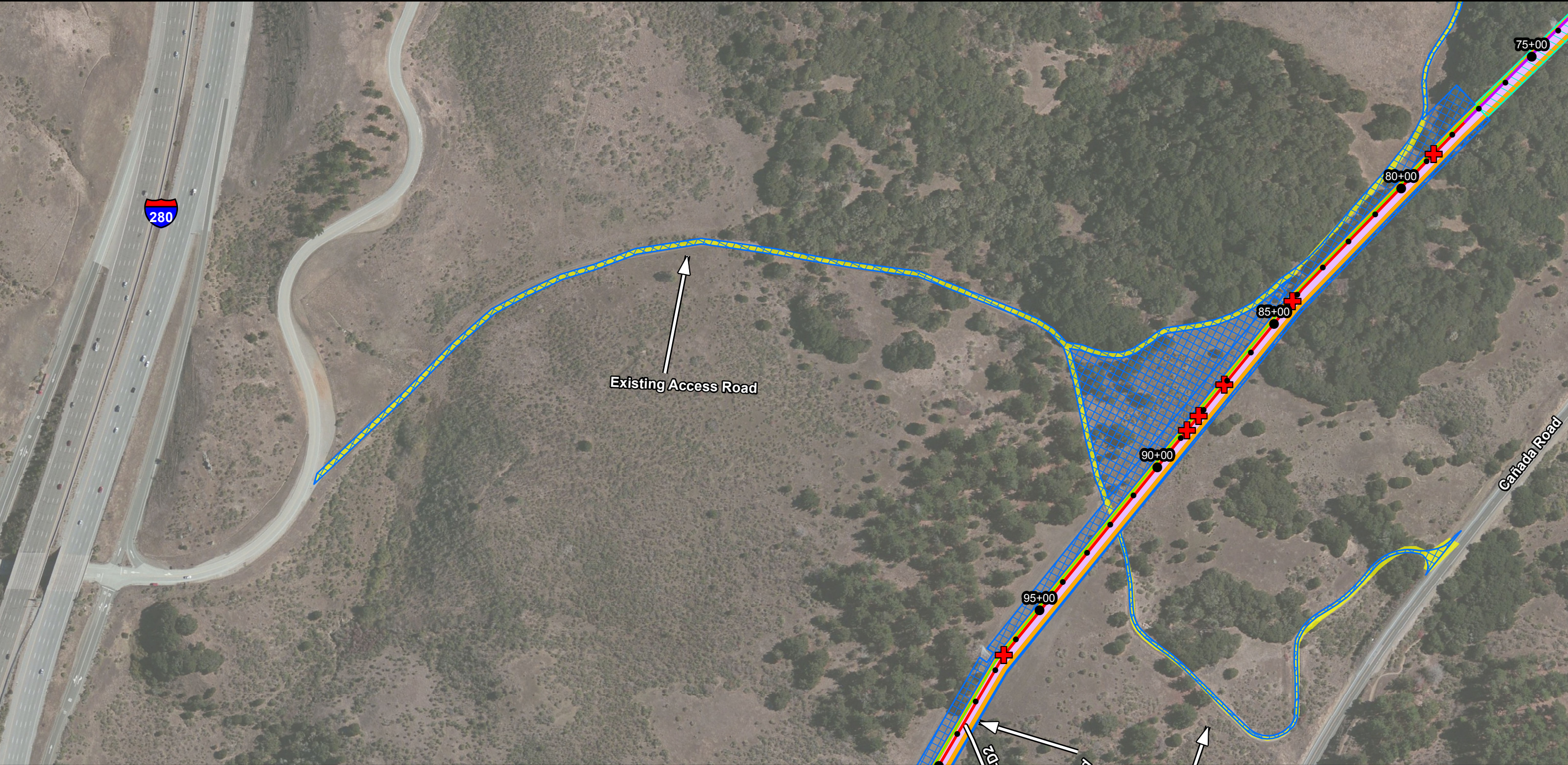
- | |
|---|
| Ephemeral Stream |
| — Drainage to be crossed by Trenching |
| — Drainage to be crossed by HDD |
| — Aerially Spanned Crossing |
| — Non-jurisdictional Cement-lined V-ditch |



Line 109 Cañada Road, Bunker Hill, and Crystal Springs Pipeline Replacement Project

Figure 1
Project Overview Map
Cañada Road Segment

Service Layer Credits: Sources: Esri, HERE, DeLorme, TomTom, Intermap, increment P Corp., GEBCO, USGS, FAO, NPS, NRCAN, GeoBase, IGN, Kadaster NL, Ordnance Survey, Esri Japan, METI, Esri China (Hong Kong), swisstopo, MapmyIndia, © OpenStreetMap contributors, and the GIS User Community
Source: Esri, DigitalGlobe, GeoEye, Earthstar Geographics, CNES/Airbus DS, USDA, USGS, AEX, Getmapping, Aerogrid, IGN, IGP, swisstopo, and the GIS User Community, TRC 2014, PG&E 2014

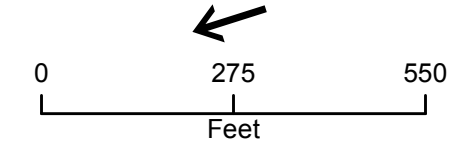


Legend

- Stationing
- ✚ Electrolysis Test Station
- Aerially Spanned Pipeline Replacement
- HDD Pipeline Replacement
- Line 109 Pipeline Replacement
- Existing Pipeline
- ▨ Proposed Temporary Easement
- ▨ HDD Equipment Location
- ▨ HDD Work Area
- ▨ Existing Permanent Easement
- ▨ Proposed Permanent Easement
- ▨ Access Roads

Waters

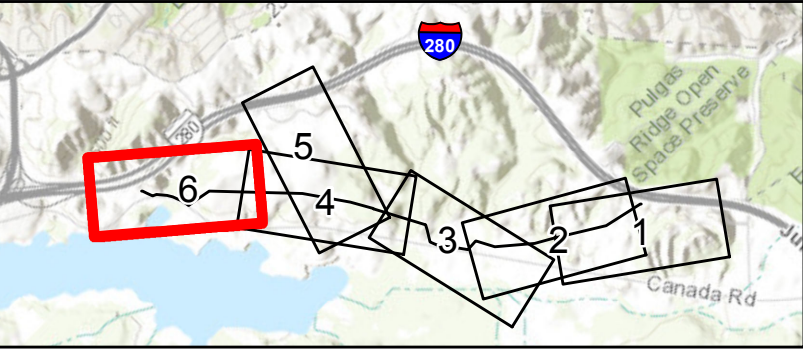
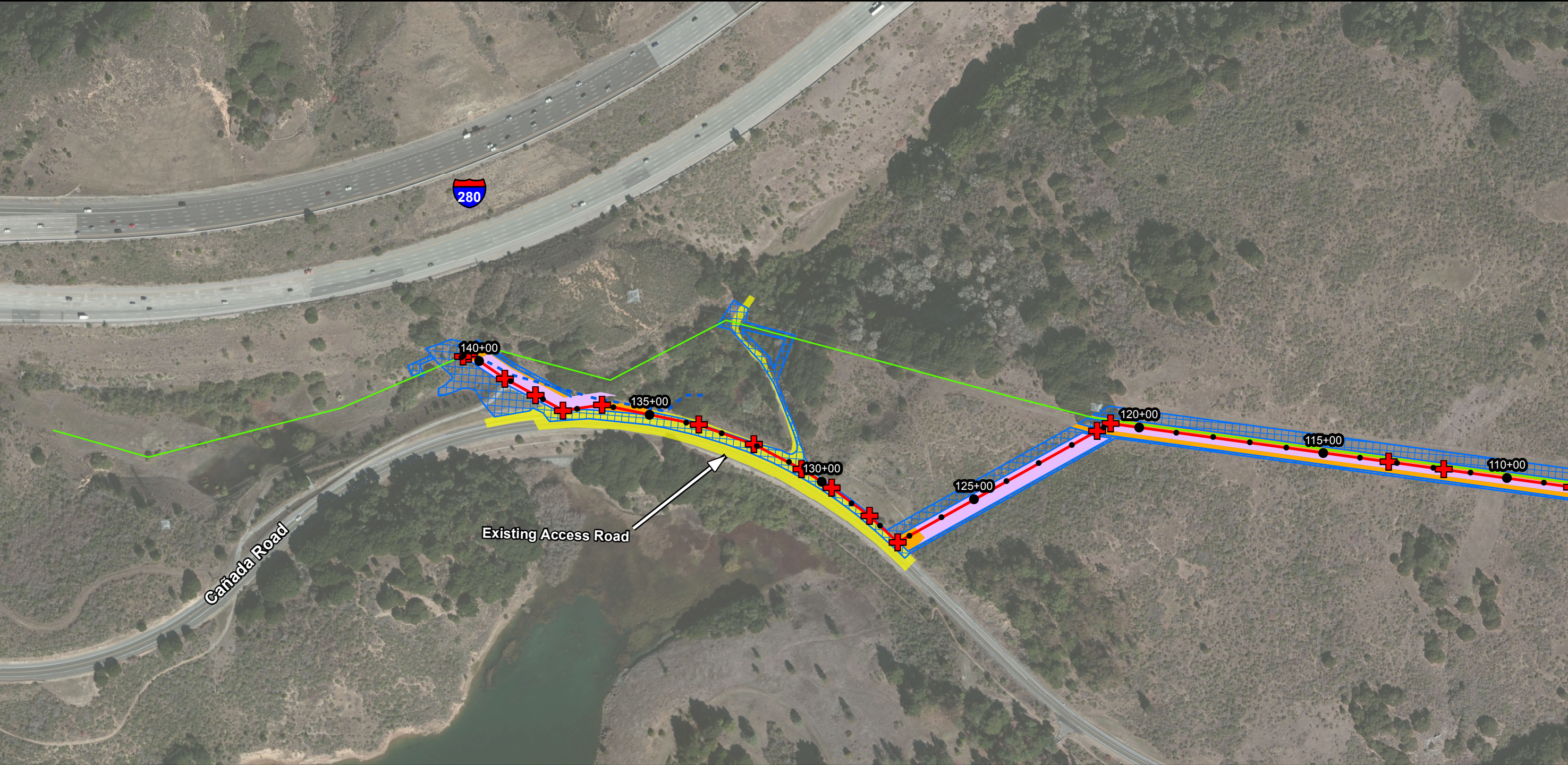
- Ephemeral Stream
- Drainage to be crossed by Trenching
- Drainage to be crossed by HDD
- Aerially Spanned Crossing
- Non-jurisdictional Cement-lined V-ditch



Line 109 Cañada Road, Bunker Hill, and Crystal Springs Pipeline Replacement Project

Figure 1
Project Overview Map
Cañada Road Segment

Service Layer Credits: Sources: Esri, HERE, DeLorme, TomTom, Intermap, increment P Corp., GEBCO, USGS, FAO, NPS, NRCAN, GeoBase, IGN, Kadaster NL, Ordnance Survey, Esri Japan, METI, Esri China (Hong Kong), swisstopo, MapmyIndia, © OpenStreetMap contributors, and the GIS User Community
Source: Esri, DigitalGlobe, GeoEye, Earthstar Geographics, CNES/Airbus DS, USDA, USGS, AEX, Getmapping, Aerogrid, IGN, IGP, swisstopo, and the GIS User Community, TRC 2014, PG&E 2014

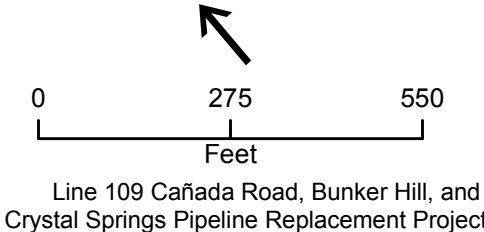


Legend

- Stationing
- ✚ Electrolysis Test Station
- Aerially Spanned Pipeline Replacement
- HDD Pipeline Replacement
- Line 109 Pipeline Replacement
- Existing Pipeline
- ▨ Proposed Temporary Easement
- ▨ HDD Equipment Location
- ▨ HDD Work Area
- ▨ Existing Permanent Easement
- ▨ Proposed Permanent Easement
- ▨ Access Roads

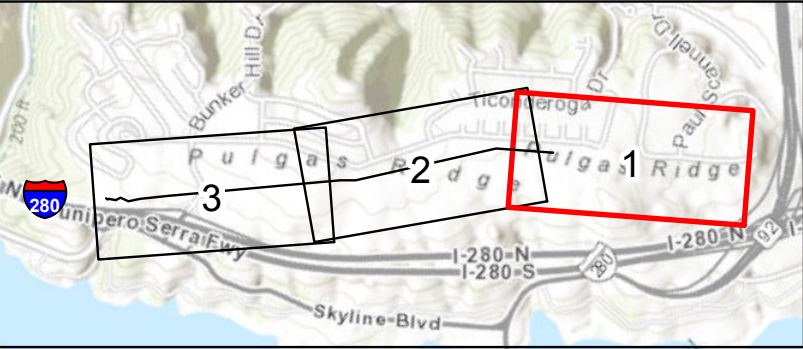
Waters

- Ephemeral Stream
- Drainage to be crossed by Trenching
- Drainage to be crossed by HDD
- Aerially Spanned Crossing
- Non-jurisdictional Cement-lined V-ditch



Line 109 Cañada Road, Bunker Hill, and Crystal Springs Pipeline Replacement Project

Figure 1
Project Overview Map
Cañada Road Segment



- Legend**
- Stationing
 - Access Points
 - ⊕ Electrolysis Test Station
 - Line 109 Pipeline Replacement
 - HDD Pipeline Replacement
 - Existing Pipeline
 - ⊗ Proposed Temporary Easement
 - ⊗ Proposed Permanent Easement
 - ⊗ HDD Equipment Location
 - ▨ HDD Work Area
 - ▨ Existing Permanent Easement
 - ▨ Proposed Permanent Easement
 - ▨ Access Roads
 - ▨ Ephemeral Swale to be Crossed by HDD

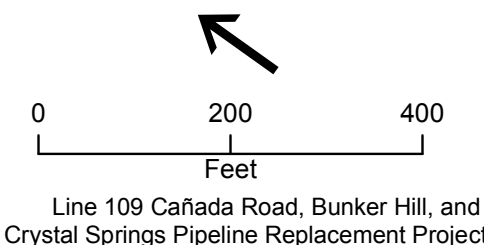
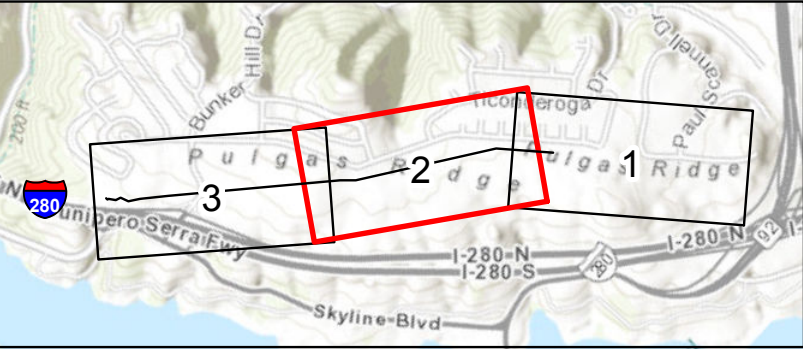


Figure 2
Project Overview Map
Bunker Hill Segment



- Legend**
- Stationing
 - Access Points
 - ⊕ Electrolysis Test Station
 - Line 109 Pipeline Replacement
 - HDD Pipeline Replacement
 - Existing Pipeline
 - ⊗ Proposed Temporary Easement
 - ⊞ Proposed Permanent Easement
 - ⊞ HDD Equipment Location
 - ▨ HDD Work Area
 - ▨ Existing Permanent Easement
 - ▨ Proposed Permanent Easement
 - ▨ Access Roads
 - ▨ Ephemeral Swale to be Crossed by HDD

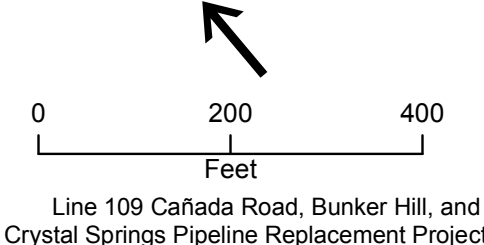
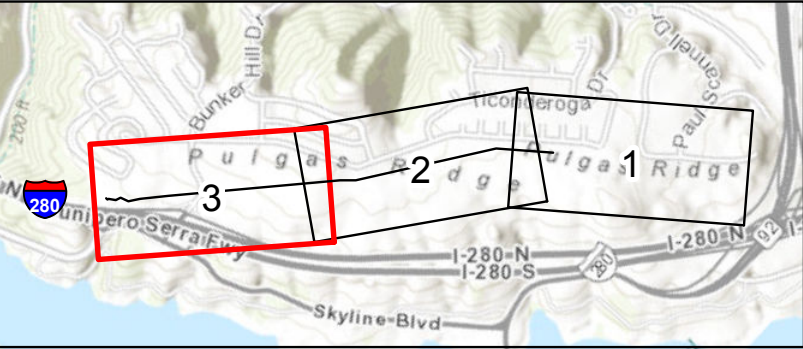


Figure 2
Project Overview Map
Bunker Hill Segment



Legend

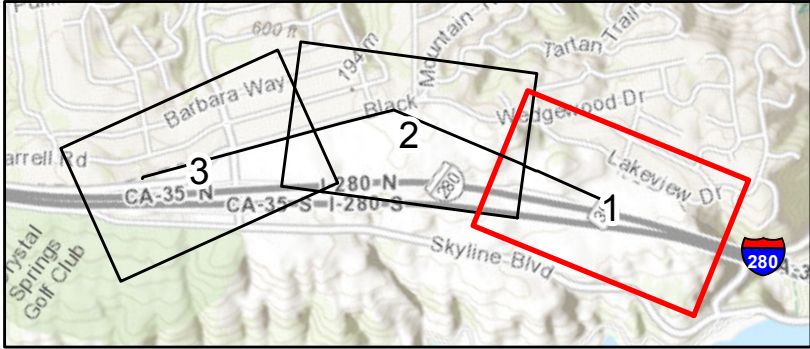
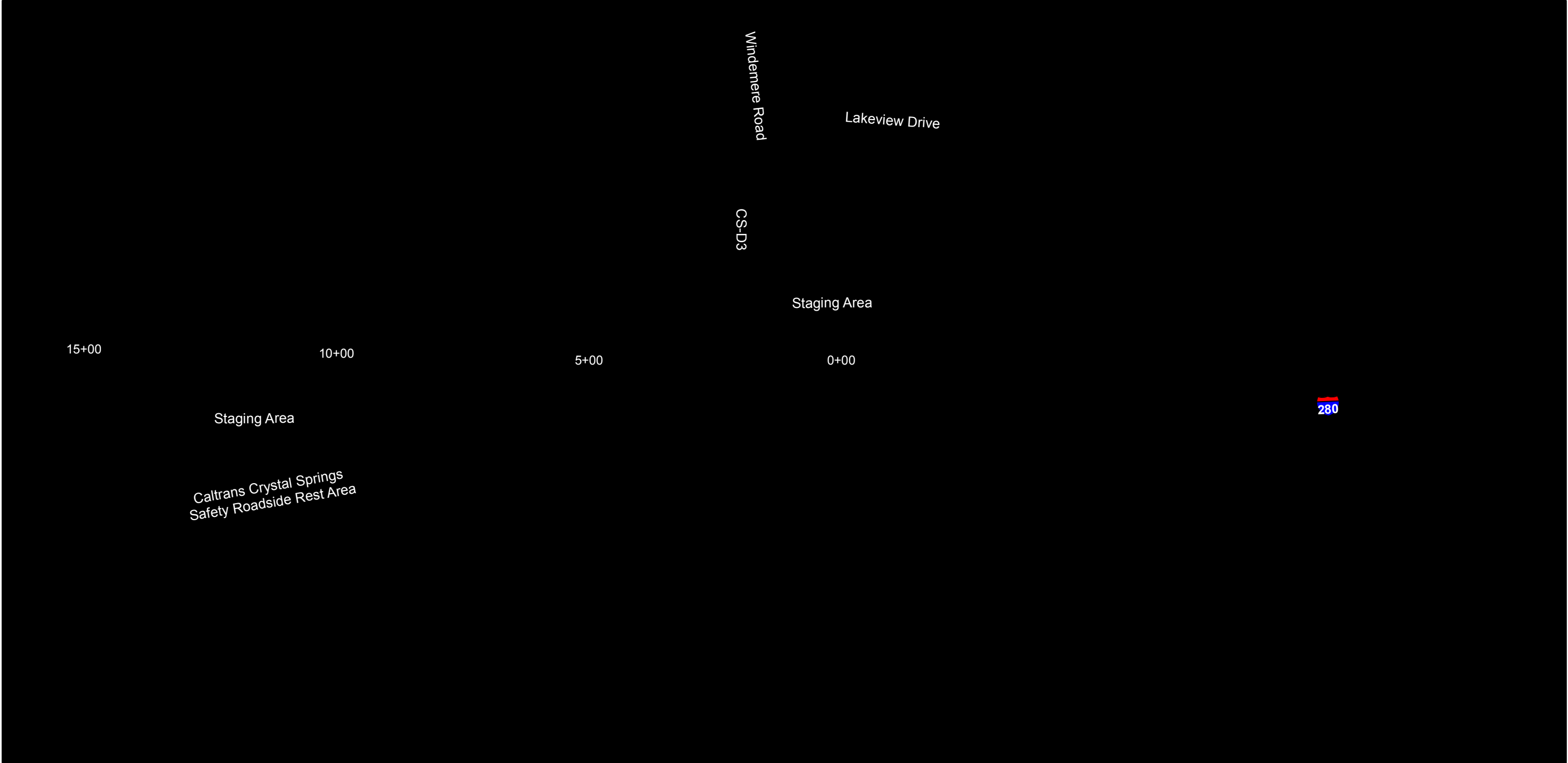
• Stationing	— HDD Pipeline Replacement	▨ HDD Work Area
● Access Points	— Existing Pipeline	■ Existing Permanent Easement
⊕ Electrolysis Test Station	▨ Proposed Temporary Easement	■ Proposed Permanent Easement
— Line 109 Pipeline Replacement	▨ HDD Equipment Location	■ Access Roads
		■ Ephemeral Swale to be Crossed by HDD

0 200 400
Feet

Line 109 Cañada Road, Bunker Hill, and
Crystal Springs Pipeline Replacement Project

Figure 2
Project Overview Map
Bunker Hill Segment

Service Layer Credits: Sources: Esri, HERE, DeLorme, TomTom, Intermap, increment P Corp., GEBCO, USGS, FAO, NPS, NRCAN, GeoBase, IGN, Kadaster NL, Ordnance Survey, Esri Japan, METI, Esri China (Hong Kong), swisstopo, MapmyIndia, © OpenStreetMap contributors, and the GIS User Community
Source: Esri, DigitalGlobe, GeoEye, Earthstar Geographics, CNES/Airbus DS, USDA, USGS, AEX, Getmapping, Aerogrid, IGN, IGP, swisstopo, and the GIS User Community, TRC 2014, PG&E 2014

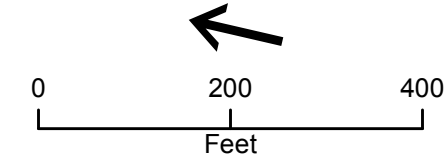


Legend

- Stationing
- Access Points
- ⊗ Sniff Hole
- ⊕ Electrolysis Test Station
- Line 109 Pipeline Replacement
- Existing Pipeline
- Existing Permanent Easement
- Proposed Permanent Easement
- ▤ Proposed Temporary Easement
- Access Roads

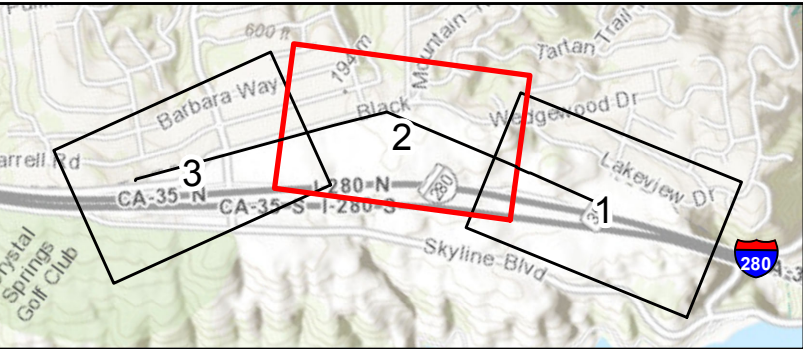
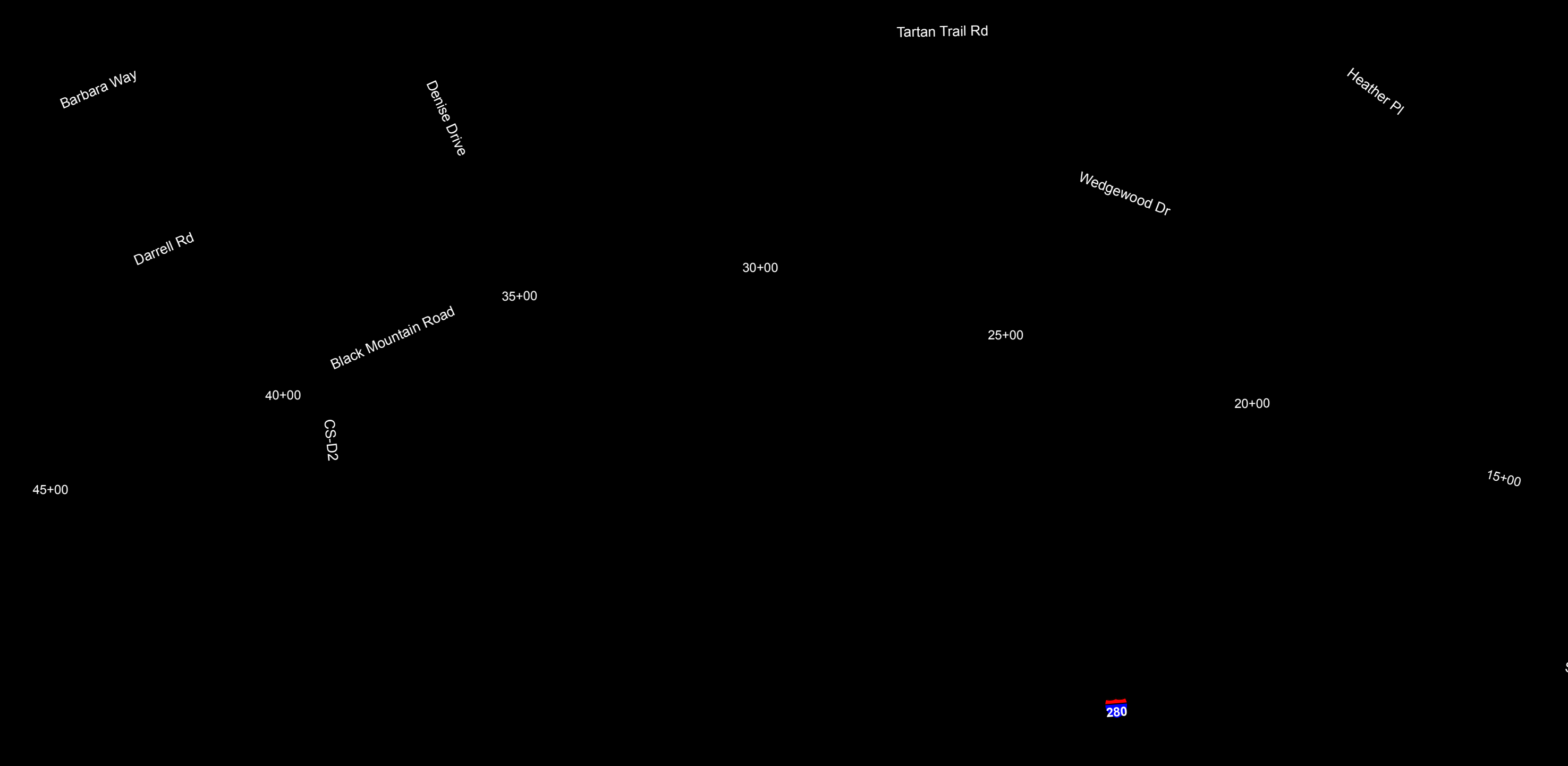
Waters

- Ephemeral Swale
- - - Non-Jurisdictional Cement-lined V-ditch
- Mesic Meadow
- Non-Jurisdictional Swale



Line 109 Cañada Road, Bunker Hill, and
Crystal Springs Pipeline Replacement Project

Figure 3
Project Overview Map
Crystal Springs Segment

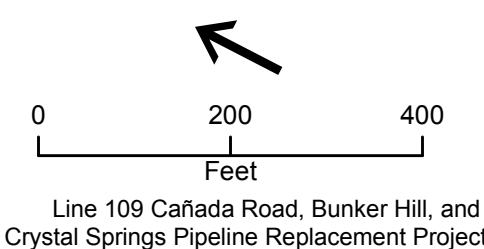


Legend

- Stationing
- Access Points
- Sniff Hole
- Electrolysis Test Station
- Line 109 Pipeline Replacement
- Existing Pipeline
- Existing Permanent Easement
- Proposed Permanent Easement
- Proposed Temporary Easement
- Access Roads

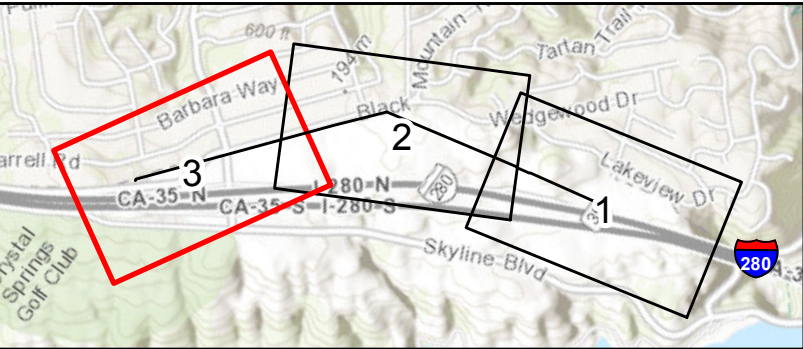
Waters

- Ephemeral Swale
- Non-Jurisdictional Cement-lined V-ditch
- Mesic Meadow
- Non-Jurisdictional Swale



Line 109 Cañada Road, Bunker Hill, and
Crystal Springs Pipeline Replacement Project

Figure 3
Project Overview Map
Crystal Springs Segment

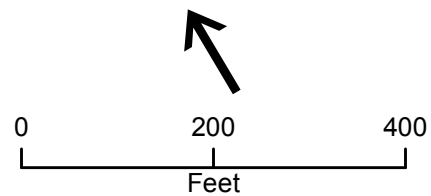


Legend

- Stationing
- Access Points
- ⊗ Sniff Hole
- ⊕ Electrolysis Test Station
- Line 109 Pipeline Replacement
- Existing Pipeline
- Existing Permanent Easement
- Proposed Permanent Easement
- Proposed Temporary Easement
- Access Roads

Waters

- Ephemeral Swale
- Non-Jurisdictional Cement-lined V-ditch
- Mesic Meadow
- Non-Jurisdictional Swale



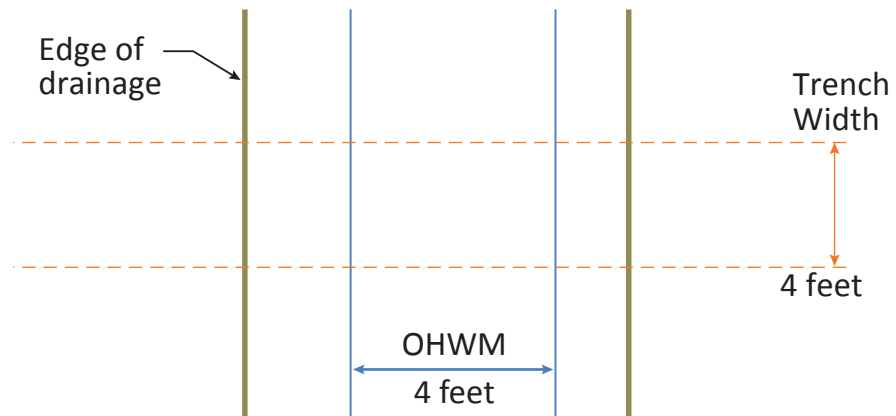
Line 109 Cañada Road, Bunker Hill, and
Crystal Springs Pipeline Replacement Project
Figure 3
Project Overview Map
Crystal Springs Segment

Appendix B

Drainage and Aerial Crossing Views

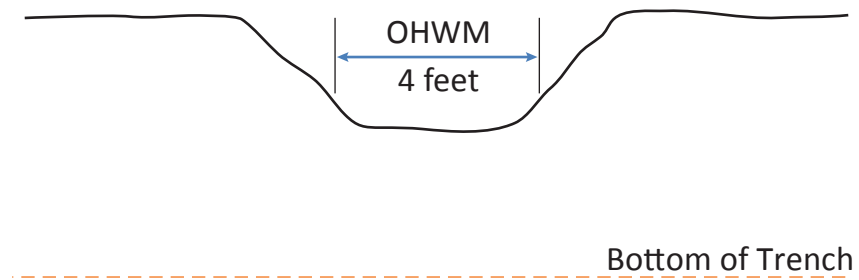
Trenching Plan View

Not to Scale



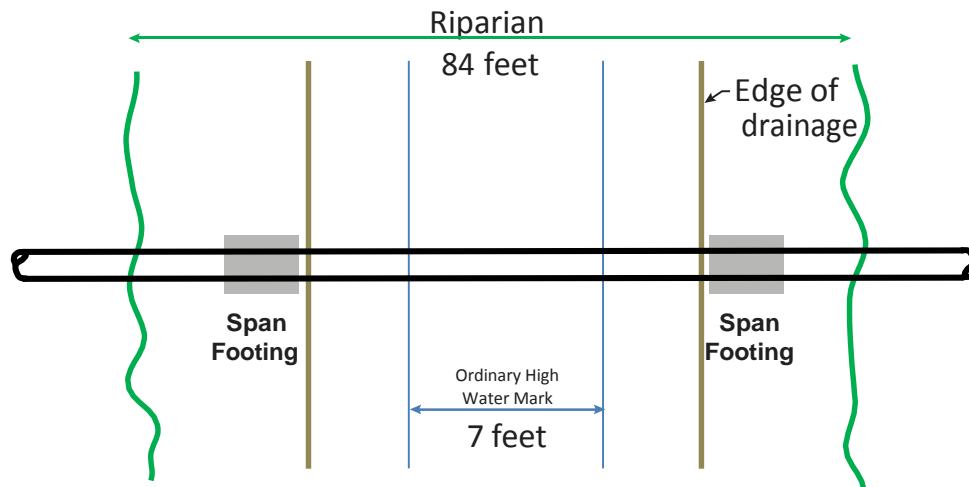
Trenching Profile View

Not to Scale



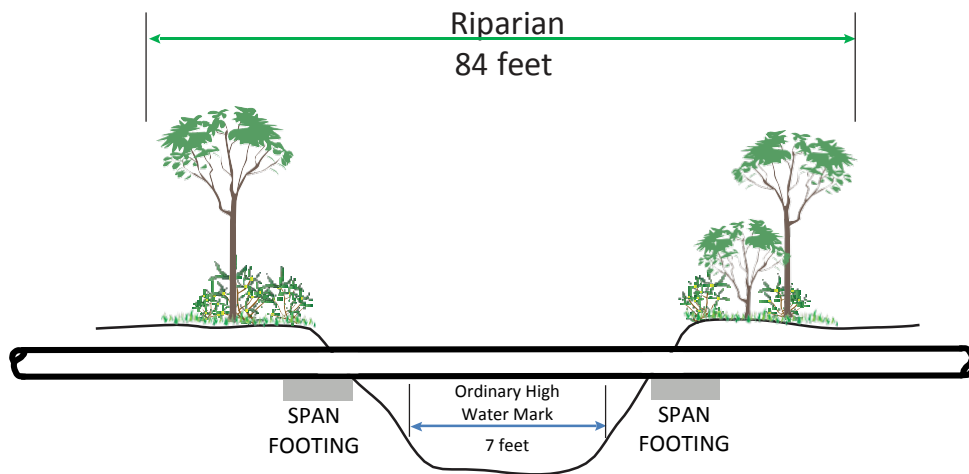
Aerial Span Plan View

Not to Scale



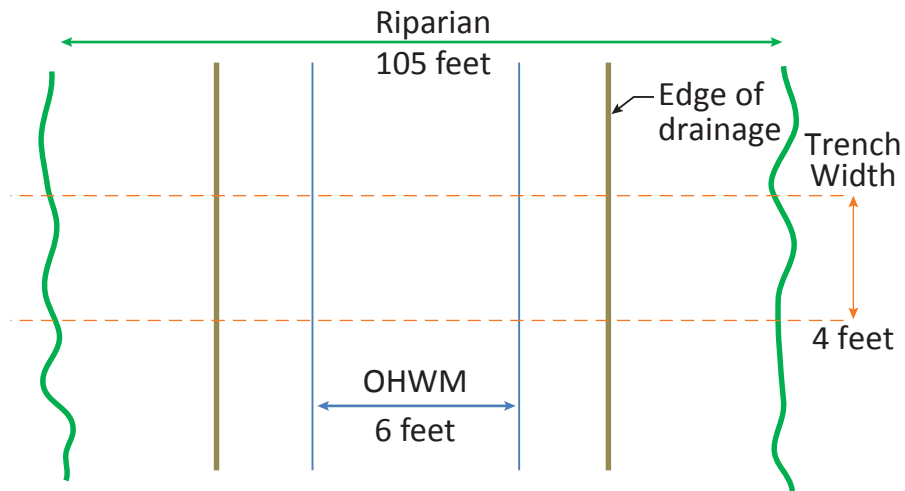
Aerial Span Profile View

Not to Scale



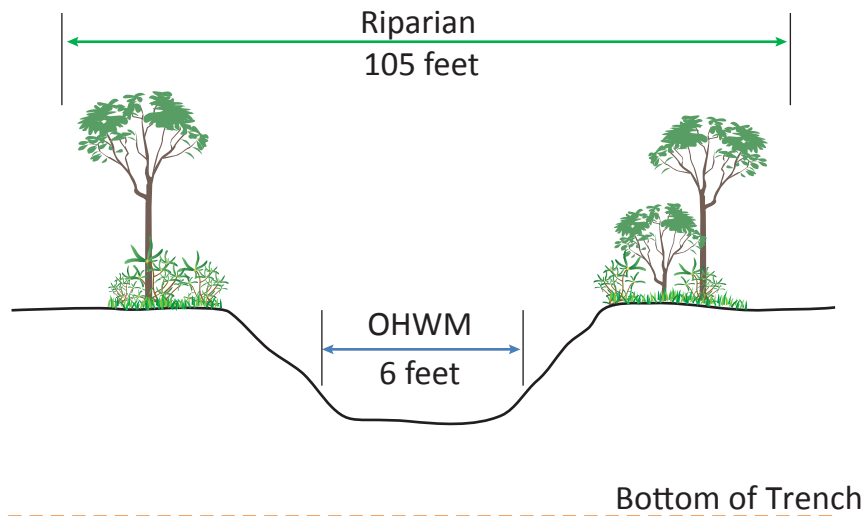
Trenching Plan View

Not to Scale



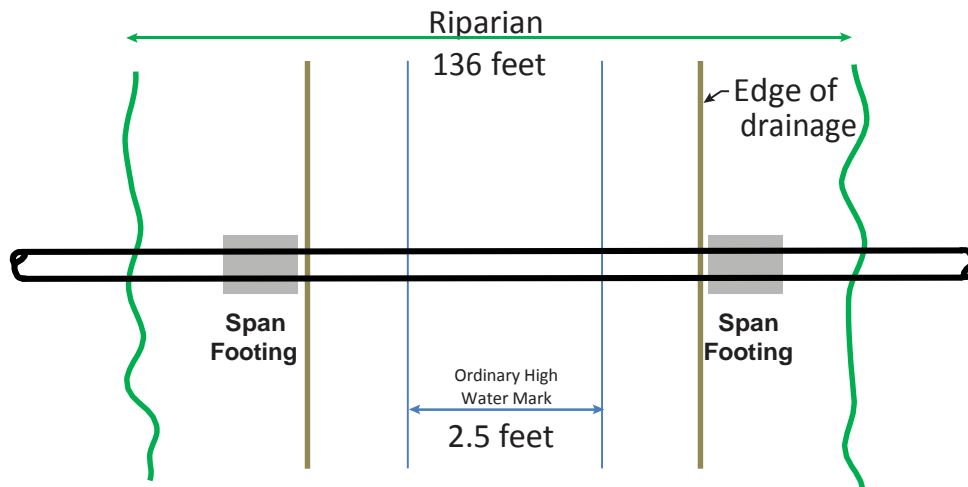
Trenching Profile View

Not to Scale



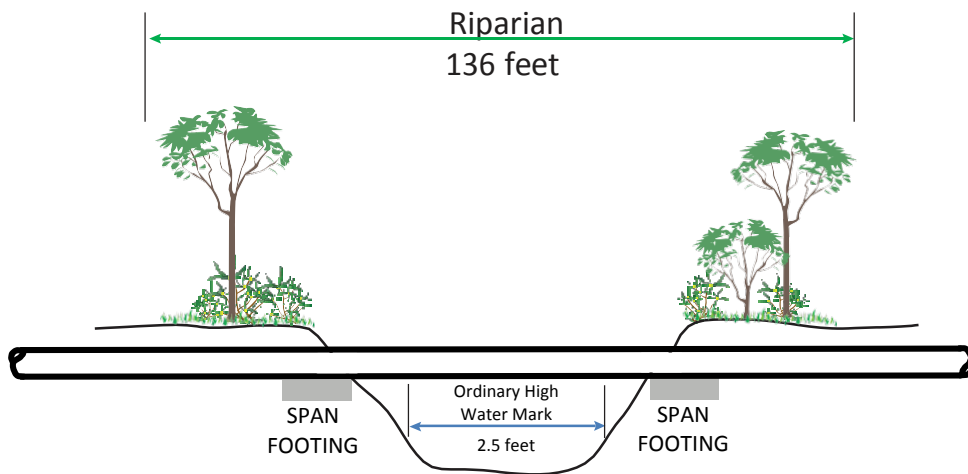
Aerial Span Plan View

Not to Scale



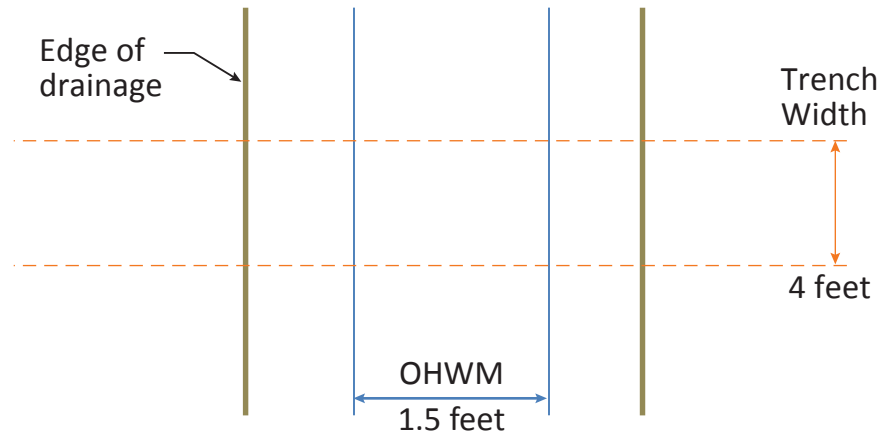
Aerial Span Profile View

Not to Scale



Trenching Plan View

Not to Scale



Trenching Profile View

Not to Scale

